

Datasheet for ABIN7540274

**SLC7A11 Protein (AA 1-501) (GST tag)**[Go to Product page](#)**1** Image

## Overview

Quantity:	2 µg
Target:	SLC7A11
Protein Characteristics:	AA 1-501
Origin:	Human
Source:	Wheat germ
Protein Type:	Recombinant
Purification tag / Conjugate:	This SLC7A11 protein is labelled with GST tag.
Application:	Western Blotting (WB), ELISA, Affinity Purification (AP), Antibody Array (AA)

## Product Details

Purpose:	SLC7A11 (Human) Recombinant Protein (P01)
Sequence:	MVRKPVVSTI SKGGYLQGNV NGRLPSLGNK EPPGQEKVQL KRKVTLLRGV SIIIGTIIGA GIFISPKGVL QNTGSVGM SL TIWTVCGVLS LFGALSYAEL GTTIKSSGGH YTYILEVFGP LPAFVRVWVE LLIIRPAATA VISLAFGRYI LEPFFIQCEI PELAIKLITA VGITVVMVLN SMSVSW SARI QIFLTFCKLT AILIIIVPGV MQLIKGQTQN FKDAFSGRDS SITRLPLAFY YGMAYAGWF YLNFTVEEVE NPEKTIPLAI CISMAIVTIG YVLTNVAYFT TINAEELLS NAVAVTF SER LLGNFSLAVP IFVALSCFGS MNGGVFAVSR LFYVASREGH LPEILSMIHV RKHTPLPAVI VLHPLTMIML FSGDLDSL LN FLSFARWLF I GLAVAGLIYL RYKCPDMHRP FKVPLFIPAL FSFTCLFMVA LSLYSDPFST GIGFVITLTG VPAYYLFIIW DKKPRWFRIM SEKIRTRLQI ILEVVPEEDK L
Characteristics:	Human SLC7A11 full-length ORF ( NP_055146.1, 1 a.a. - 501 a.a.) recombinant protein with GST-tag at N-terminal.

## Product Details

---

Purification: in vitro wheat germ expression system

## Target Details

---

Target: SLC7A11

Alternative Name: SLC7A11 ([SLC7A11 Products](#))

Background: Gene: solute carrier family 7, (cationic amino acid transporter, y+ system) member 11  
Synonyms: CCBR1, xCT

Gene ID: 23657

NCBI Accession: [NM\\_014331](#)

## Application Details

---

Application Notes: Optimal working dilution should be determined by the investigator.

Restrictions: For Research Use only

## Handling

---

Buffer: 50 mM Tris-HCl, 10 mM reduced Glutathione, pH =8.0 in the elution buffer.

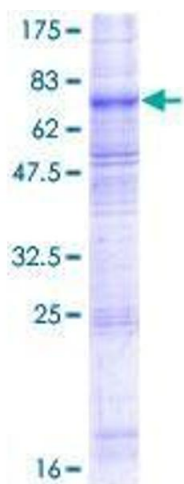
Handling Advice: Aliquot to avoid repeated freezing and thawing.

Storage: -80 °C

Storage Comment: Best use within three months from the date of receipt of this protein.

## Images

---



**Image 1.**