

Datasheet for ABIN7540275

**SOSTDC1 Protein (AA 1-206) (GST tag)**[1 Image](#)[1 Publication](#)[Go to Product page](#)

## Overview

Quantity:	2 µg
Target:	SOSTDC1
Protein Characteristics:	AA 1-206
Origin:	Human
Source:	Wheat germ
Protein Type:	Recombinant
Purification tag / Conjugate:	This SOSTDC1 protein is labelled with GST tag.
Application:	Western Blotting (WB), ELISA, Affinity Purification (AP), Antibody Array (AA)

## Product Details

Purpose:	SOSTDC1 (Human) Recombinant Protein (P01)
Sequence:	MLPPAIHFYL LPLACILMKS CLAFKNDATE ILYSHVVKPV PAHPSSNSTL NQARNGGRHF SNTGLDRNTR VQVGCRELRS TKYISDGQCT SISPLKELVC AGECLPLPVL PNWIGGGYGT KYWSRRSSQE WRCVNDKTRT QRIQLQCQDG STRTYKITVV TACKCKRYTR QHNESSHNFE SMSPAKPVQH HRERKRASKS SKHSMS
Characteristics:	Human SOSTDC1 full-length ORF ( NP_056279.1, 1 a.a. - 206 a.a.) recombinant protein with GST-tag at N-terminal.
Purification:	in vitro wheat germ expression system

## Target Details

Target:	SOSTDC1
---------	---------

## Target Details

---

Alternative Name:	SOSTDC1 ( <a href="#">SOSTDC1 Products</a> )
Background:	Full Gene Name: sclerostin domain containing 1 Synonyms: CDA019,DKFZp564D206,ECTODIN,USAG1
Gene ID:	25928
NCBI Accession:	<a href="#">NM_015464</a>

## Application Details

---

Application Notes:	Optimal working dilution should be determined by the investigator.
Comment:	Preparation method: in vitro, wheat germ expression system Product Quality tested by: 12.5% SDS-PAGE Stained with Coomassie Blue.
Restrictions:	For Research Use only

## Handling

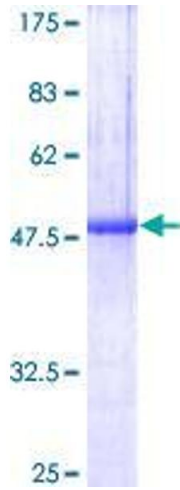
---

Buffer:	50 mM Tris-HCl, 10 mM reduced Glutathione, pH =8.0 in the elution buffer.
Handling Advice:	Aliquot to avoid repeated freezing and thawing.
Storage:	-80 °C
Storage Comment:	Best use within three months from the date of receipt of this protein.

## Publications

---

Product cited in:	Lee, Miyazawa, Shin, Kwon, Kang, Choi, Lee, Kondo, Cho, Jung: "Shh signaling is essential for rugae morphogenesis in mice." in: <b>Histochemistry and cell biology</b> , Vol. 136, Issue 6, pp. 663-75, (2011) ( <a href="#">PubMed</a> ).
-------------------	--------------------------------------------------------------------------------------------------------------------------------------------------------------------------------------------------------------------------------------------



**Image 1.**