

Datasheet for ABIN7540284
DMBX1 Protein (AA 1-377) (GST tag)



[Go to Product page](#)

1 Image

Overview

Quantity:	2 µg
Target:	DMBX1
Protein Characteristics:	AA 1-377
Origin:	Human
Source:	Wheat germ
Protein Type:	Recombinant
Purification tag / Conjugate:	This DMBX1 protein is labelled with GST tag.
Application:	ELISA, Western Blotting (WB), Antibody Array (AA), Affinity Purification (AP)

Product Details

Purpose:	DMBX1 (Human) Recombinant Protein (P01)
Sequence:	<p>MQHYGVNGYS LHAMNSLSAM YNLHQAAQ AQHAPDYRPS VHALTLAERL ADIILEARYG SQHRKQRRSR TAFTAQQLA LEKTFQKTHY PDVVMRERLA MCTNLPEARV QVWFKNRRAK FRKKQRSLQK EQLQKQKEAE GSHGEGKAE PTPDTQLDTE QPPRLPGSDP PAELHLSLSE QSASEAPED QPDREEDPRA GAEDPKAEKS PGADSKGLGC KRGSPKADSP GSLTITPVAP GGLLGPSHS YSSSPLSLFR LQEQRQHMA ATNNLVHYSS FEVGGPAPAA AAAAAVPYL GVNMAPLGS LHCQSYQSL AAAAAHQGVW GSPLLAPPA GLAPASATLN SKTTSIENLR LRAKQHAASL GLDTLPN</p>
Characteristics:	Human DMBX1 full-length ORF (NP_757379.1, 1 a.a. - 377 a.a.) recombinant protein with GST-tag at N-terminal.
Purification:	in vitro wheat germ expression system

Target Details

Target:	DMBX1
Alternative Name:	DMBX1 (DMBX1 Products)
Background:	Full Gene Name: diencephalon/mesencephalon homeobox 1 Synonyms: MBX,OTX3,PAXB
Gene ID:	127343
NCBI Accession:	NM_172225
Pathways:	Feeding Behaviour

Application Details

Application Notes:	Optimal working dilution should be determined by the investigator.
Comment:	Preparation method: in vitro, wheat germ expression system Product Quality tested by: 12.5% SDS-PAGE Stained with Coomassie Blue.
Restrictions:	For Research Use only

Handling

Buffer:	50 mM Tris-HCl, 10 mM reduced Glutathione, pH =8.0 in the elution buffer.
Handling Advice:	Aliquot to avoid repeated freezing and thawing.
Storage:	-80 °C
Storage Comment:	Best use within three months from the date of receipt of this protein.

Images

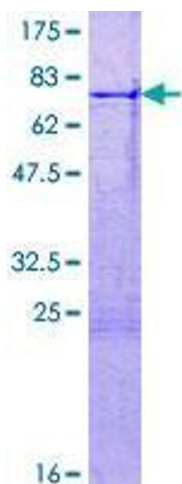


Image 1.