

Datasheet for ABIN7540285

SLC35B2 Protein (AA 1-432) (GST tag)[Go to Product page](#)**1** Image

Overview

Quantity:	2 µg
Target:	SLC35B2
Protein Characteristics:	AA 1-432
Origin:	Human
Source:	Wheat germ
Protein Type:	Recombinant
Purification tag / Conjugate:	This SLC35B2 protein is labelled with GST tag.
Application:	ELISA, Western Blotting (WB), Affinity Purification (AP), Antibody Array (AA)

Product Details

Purpose:	SLC35B2 (Human) Recombinant Protein (P01)
Sequence:	MDARWWAVVW LAAFPSLGAG GETPEAPPES WTQLWFFRFV VNAAGYASFM VPGYLLVQYF RRKNYLETGR GLCFPLVKAC VFGNEPKASD EVPLAPRTEA AETTPMWQAL KLLFCATGLQ VSYLTWGV LQ ERVMTRSYGA TATSPGERFT DSQFLVLMNR VLALIVAGLS CVLCKQPRHG APMYRYSFAS LSNVLSSWCQ YEALKFVSFP TQVLAKASKV IPVMLMGKLV SRRSYEHWEY LTATLISIGV SMFLLSSGPE PRSSPATTLS GLILLAGYIA FDSFTSNWQD ALFAYKMSSV QMMFGVNFBS CLFTVGSLL E QGALLEGTRF MGRHSEFAAH ALLSICSAC GQLFIFYTIG QFGAAVFTII MTLRQAFAIL LSCLLYGHTV TVVGGLGVAV VFAALLLRVY ARGRLKQRGK KAVPVESPVQ KV
Characteristics:	Human SLC35B2 full-length ORF (NP_835361.1, 1 a.a. - 432 a.a.) recombinant protein with GST-tag at N-terminal.

Product Details

Purification: in vitro wheat germ expression system

Target Details

Target: SLC35B2

Alternative Name: SLC35B2 ([SLC35B2 Products](#))

Background: Full Gene Name: solute carrier family 35, member B2
Synonyms: PAPST1,SLL,UGTrel4

Gene ID: 347734

NCBI Accession: [NM_178148](#)

Pathways: [Glycosaminoglycan Metabolic Process](#), [Ribonucleoside Biosynthetic Process](#)

Application Details

Application Notes: Optimal working dilution should be determined by the investigator.

Comment: Preparation method: in vitro, wheat germ expression system
Product Quality tested by: 12.5% SDS-PAGE Stained with Coomassie Blue.

Restrictions: For Research Use only

Handling

Buffer: 50 mM Tris-HCl, 10 mM reduced Glutathione, pH =8.0 in the elution buffer.

Handling Advice: Aliquot to avoid repeated freezing and thawing.

Storage: -80 °C

Storage Comment: Best use within three months from the date of receipt of this protein.

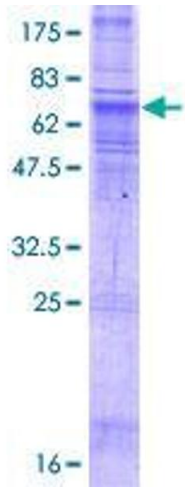


Image 1.