

Datasheet for ABIN7540289
anti-ETS1 antibody (C-Term)

2 Images



[Go to Product page](#)

Overview

Quantity:	100 µL
Target:	ETS1
Binding Specificity:	C-Term
Reactivity:	Human
Host:	Rabbit
Clonality:	Polyclonal
Conjugate:	This ETS1 antibody is un-conjugated
Application:	Western Blotting (WB), CHIP DNA-Sequencing (CHIP-seq)

Product Details

Immunogen:	This Ets-1 antibody was raised against a peptide corresponding to the C-terminal half of mouse Ets-1.
Characteristics:	Ets-1 transcription factor is a member of the Ets family of proteins that share a unique binding domain. Ets1 (E26 transformation-specific sequence-1) is a proto-oncogene whose DNA binding activity is controlled by kinases and other transcription factors. Ets 1 has been associated with regulation of cell growth, differentiation and apoptosis. Ets-1 antibody (pAb) was raised in a Rabbit host. It has been validated for use in CHIP-Seq and Western blot, it has been shown to react with Human samples.
Purification:	Serum

Target Details

Target:	ETS1
Alternative Name:	Ets-1 (ETS1 Products)
Molecular Weight:	54 kDa
NCBI Accession:	NP_035938

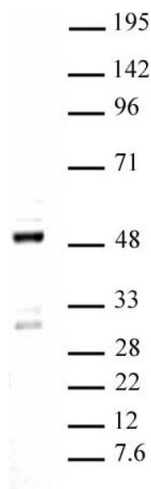
Application Details

Application Notes:	Optimal working dilution should be determined by the investigator.
Restrictions:	For Research Use only

Handling

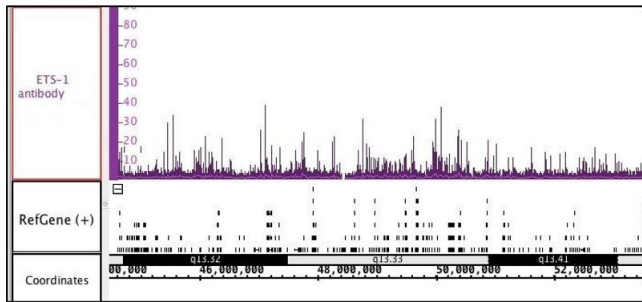
Buffer:	Rabbit serum containing 30 % glycerol and 0.035 % sodium azide.
Preservative:	Sodium azide
Precaution of Use:	This product contains Sodium azide: a POISONOUS AND HAZARDOUS SUBSTANCE which should be handled by trained staff only.
Storage:	-20 °C
Storage Comment:	Avoid repeated freeze/thaw cycles by aliquoting items into single-use fractions for storage at -20°C for up to 2 years. Keep all reagents on ice when not in storage.

Images



Western Blotting

Image 1. Ets-1 pAb tested by Western blot. Detection of Ets-1 by Western blot. The analysis was performed using CCRF-CEM nuclear extract and Ets-1 pAb at a 1:500 dilution.



ChIP DNA-Sequencing

Image 2. ETS-1 antibody (pAb) tested by ChIP-Seq. Chromatin immunoprecipitation (ChIP) was performed using the ChIP-IT High Sensitivity Kit with 30 µg of chromatin from human CD4+ T cell chromatin and 4 µg ETS-1 antibody. ChIP DNA was sequenced on the Illumina HiSeq and 7.9 million sequence tags were mapped to identify ETS-1 binding sites in a region of human chromosome 19.