

Datasheet for ABIN7540310

## Gelatin Subbed Slides

[1 Image](#)[Go to Product page](#)

### Overview

---

Quantity: 1 pack

### Product Details

---

Characteristics: The 0.1 % gelatin coated slides measure 25 mm x 75 mm with a frosted end for marking. For optimal adhesion, we recommend sections < 100 µm.

### Target Details

---

Background: Gelatin subbed slides have been used for many years in research and clinical applications. Gelatin subbed slides are very useful with cyrosections, many histochemical stains, immunohistochemistry and in situ hybridization. Gelatin subbed slides may be used for paraffin embedded sections and epon sections.

### Application Details

---

Application Notes: Each laboratory should determine an optimum working titer for use in its particular application. Other applications have not been tested but use in such assays should not necessarily be excluded.

Comment: Slide Mounting  
Gelatin subbed slides are supplied as 72 slides per box. The slides have been carefully cleaned and subbed with a solution of gelatin and chromium potassium sulfate.

Restrictions: For Research Use only

### Handling

---

Precaution of Use: This material contains Chromium (III) Potassium Sulfate Dodecahydrate. Avoid contact with

## Handling

---

skin, eyes, or clothing. May cause allergic skin reaction. If skin or eye contact occurs, wash with copious amounts of water. If ingested or inhaled, contact a physician immediately.

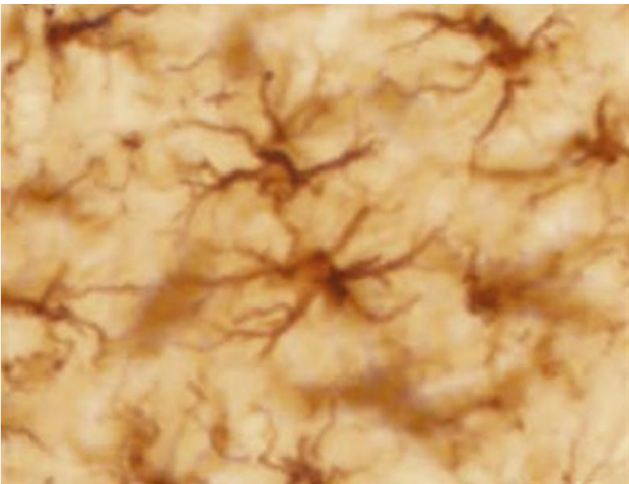
Handling Advice: Each reagent is stable for the period shown on the bottle label if stored as directed.

Storage: -80 °C

Storage Comment: The slides need to be stored at -70 °C temperature until ready to use, at that time they can be thawed.

## Images

---



**Image 1.** Free-floating Bcs1lc.232A>G mouse cerebral cortex cryosection was stained with anti-GFAP followed by secondary reagents, DAB, and mounted on Gelatin Subbed Slides