



Datasheet for ABIN754078  
**anti-LRP5 antibody (AA 501-600)**



[Go to Product page](#)

1 Image

Overview

|                      |   |
|----------------------|---|
| Quantity:            | 100 µL  |
| Target:              | LRP5  |
| Binding Specificity: | AA 501-600  |
| Reactivity:          | Mouse   |
| Host:                | Rabbit  |
| Clonality:           | Polyclonal  |
| Conjugate:           | This LRP5 antibody is un-conjugated   |
| Application:         | ELISA, Immunofluorescence (Paraffin-embedded Sections) (IF (p)), Immunohistochemistry (Paraffin-embedded Sections) (IHC (p)), Immunofluorescence (Cultured Cells) (IF (cc)), Immunohistochemistry (Frozen Sections) (IHC (fro)) |

Product Details

|                       |  |
|-----------------------|--|
| Immunogen:            | KLH conjugated synthetic peptide derived from human LRP5           |
| Isotype:              | IgG  |
| Specificity:          | This antibody will recognize LRP6 due to high sequence similarity. |
| Cross-Reactivity:     | Mouse  |
| Predicted Reactivity: | Human,Rat,Dog,Cow,Horse,Chicken,Rabbit                             |
| Purification:         | Purified by Protein A.   |

## Target Details

---

|                   |   |
|-------------------|---|
| Target:           | LRP5  |
| Alternative Name: | LRP5 ( <a href="#">LRP5 Products</a> )  |
| Background:       | <p>Synonyms: HBM, LR3, OPS, EVR1, EVR4, LRP7, OPPG, BMND1, LRP-5, OPTA1, VBCH2, Low-density lipoprotein receptor-related protein 5, LRP5</p> <p>Background: Component of the Wnt-Fzd-LRP5-LRP6 complex that triggers beta-catenin signaling through inducing aggregation of receptor-ligand complexes into ribosome-sized signalsomes. Cell-surface coreceptor of Wnt/beta-catenin signaling, which plays a pivotal role in bone formation. The Wnt-induced Fzd/LRP6 coreceptor complex recruits DVL1 polymers to the plasma membrane which, in turn, recruits the AXIN1/GSK3B-complex to the cell surface promoting the formation of signalsomes and inhibiting AXIN1/GSK3-mediated phosphorylation and destruction of beta-catenin. Appears be required for postnatal control of vascular regression in the eye. Required for posterior patterning of the epiblast during gastrulation.</p> |
| Gene ID:          | 4041  |
| UniProt:          | <a href="#">O75197</a>  |
| Pathways:         | <a href="#">WNT Signaling</a> , <a href="#">Stem Cell Maintenance</a> , <a href="#">Positive Regulation of fat Cell Differentiation</a>   |

## Application Details

---

|                    |  |
|--------------------|--|
| Application Notes: | ELISA 1:500-1000<br>IHC-P 1:200-400<br>IHC-F 1:100-500<br>IF(IHC-P) 1:50-200<br>IF(IHC-F) 1:50-200<br>IF(ICC) 1:50-200 |
| Restrictions:      | For Research Use only  |

## Handling

---

|                    |   |
|--------------------|---|
| Format:            | Liquid  |
| Concentration:     | 1 µg/µL   |
| Buffer:            | 0.01M TBS( pH 7.4) with 1 % BSA, 0.02 % Proclin300 and 50 % Glycerol.               |
| Preservative:      | ProClin   |
| Precaution of Use: | This product contains ProClin: a POISONOUS AND HAZARDOUS SUBSTANCE, which should be |

## Handling

---

handled by trained staff only.

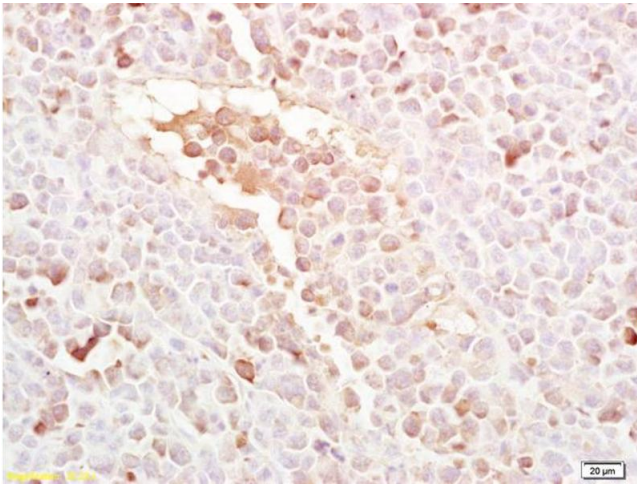
Storage: 4 °C,-20 °C

Storage Comment: Shipped at 4°C. Store at -20°C for one year. Avoid repeated freeze/thaw cycles.

Expiry Date: 12 months

## Images

---



### Immunohistochemistry

**Image 1.** Formalin-fixed and paraffin embedded mouse colon carcinoma labeled with Rabbit Anti LRP5 Polyclonal Antibody, Unconjugated (ABIN754078) at 1:200 followed by conjugation to the secondary antibody and DAB staining