



Datasheet for ABIN754108

## anti-Asialoglycoprotein Receptor 1 antibody (AA 201-291)



[Go to Product page](#)

### 2 Images

#### Overview

Quantity:	100 µL
Target:	Asialoglycoprotein Receptor 1 (ASGR1)
Binding Specificity:	AA 201-291
Reactivity:	Human, Mouse
Host:	Rabbit
Clonality:	Polyclonal
Conjugate:	This Asialoglycoprotein Receptor 1 antibody is un-conjugated
Application:	Western Blotting (WB), ELISA

#### Product Details

Immunogen:	KLH conjugated synthetic peptide derived from human ASGPR1
Isotype:	IgG
Cross-Reactivity:	Human, Mouse
Predicted Reactivity:	Rat,Cow,Pig,Horse,Rabbit
Purification:	Purified by Protein A.

#### Target Details

Target:	Asialoglycoprotein Receptor 1 (ASGR1)
Alternative Name:	ASGPR1 ( <a href="#">ASGR1 Products</a> )
Background:	Synonyms: HL-1, ASGPR, ASGPR1, CLEC4H1, Asialoglycoprotein receptor 1, ASGP-R 1, ASGPR

## Target Details

---

1, C-type lectin domain family 4 member H1, Hepatic lectin H1, ASGR1

Background: Mediates the endocytosis of plasma glycoproteins to which the terminal sialic acid residue on their complex carbohydrate moieties has been removed. The receptor recognizes terminal galactose and N-acetylgalactosamine units. After ligand binding to the receptor, the resulting complex is internalized and transported to a sorting organelle, where receptor and ligand are disassociated. The receptor then returns to the cell membrane surface.

Gene ID: 432

UniProt: [P07306](#)

Pathways: [Thyroid Hormone Synthesis](#)

## Application Details

---

Application Notes: WB 1:300-5000  
ELISA 1:500-1000

Restrictions: For Research Use only

## Handling

---

Format: Liquid

Concentration: 1 µg/µL

Buffer: 0.01M TBS( pH 7.4) with 1 % BSA, 0.02 % Proclin300 and 50 % Glycerol.

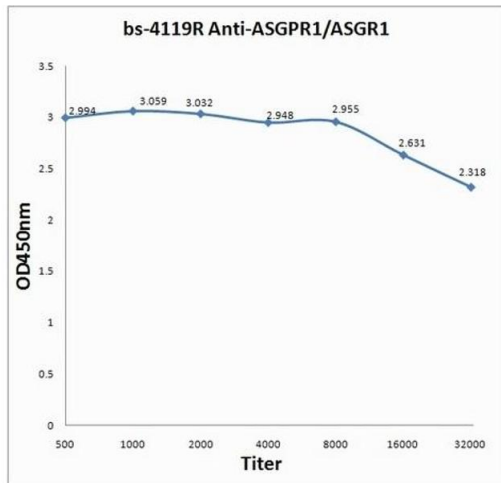
Preservative: ProClin

Precaution of Use: This product contains ProClin: a POISONOUS AND HAZARDOUS SUBSTANCE, which should be handled by trained staff only.

Storage: 4 °C,-20 °C

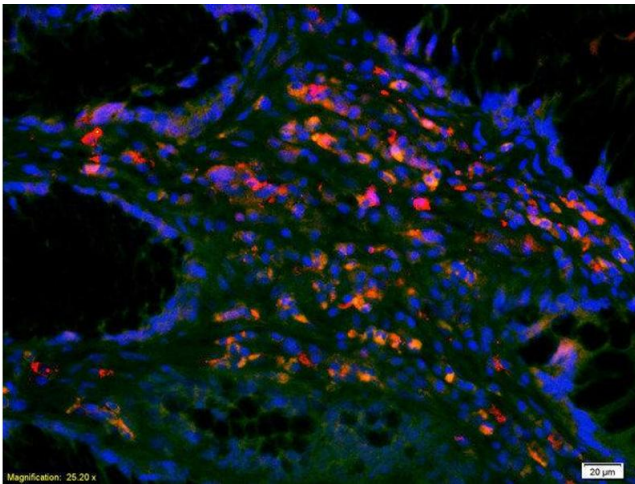
Storage Comment: Shipped at 4°C. Store at -20°C for one year. Avoid repeated freeze/thaw cycles.

Expiry Date: 12 months



### ELISA

**Image 1.** Antigen: 0.2 µg/100 µL Primary: Antiserum, 1:500, 1:1000, 1:2000, 1:4000, 1:8000, 1:16000, 1:32000; Secondary: HRP conjugated Goat-Anti-Rabbit IgG at 1: 5000; TMB staining; Read the data in MicroplateReader by 450



### Immunofluorescence

**Image 2.** Formalin-fixed and paraffin-embedded human colon carcinoma labeled with Anti-ASGPR1 Polyclonal Antibody, Unconjugated used at 1:200 dilution for 40 minutes at 37°C.