



[Go to Product page](#)

Datasheet for ABIN754243

anti-MAP4 antibody (AA 701-800)

2 Images

Overview

Quantity:	100 µL
Target:	MAP4
Binding Specificity:	AA 701-800
Reactivity:	Human, Mouse
Host:	Rabbit
Clonality:	Polyclonal
Conjugate:	This MAP4 antibody is un-conjugated
Application:	Western Blotting (WB), ELISA, Immunofluorescence (Cultured Cells) (IF (cc)), Immunofluorescence (Paraffin-embedded Sections) (IF (p)), Immunohistochemistry (Paraffin-embedded Sections) (IHC (p)), Immunohistochemistry (Frozen Sections) (IHC (fro))

Product Details

Immunogen:	KLH conjugated synthetic peptide derived from human MAP4
Isotype:	IgG
Cross-Reactivity:	Human, Mouse
Predicted Reactivity:	Rat,Dog,Cow,Pig,Horse
Purification:	Purified by Protein A.

Target Details

Target:	MAP4
---------	------

Target Details

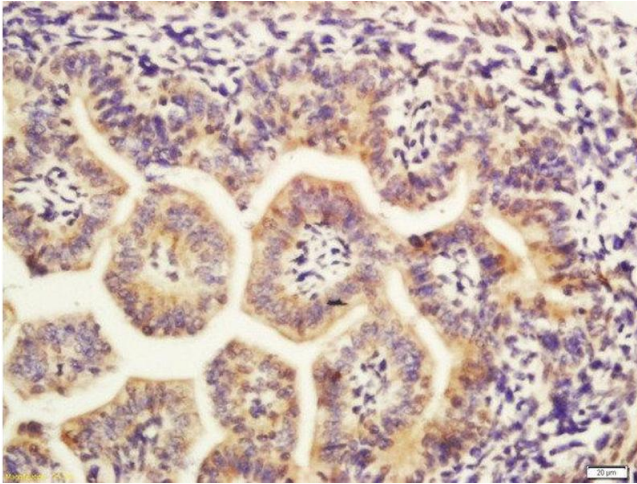
Alternative Name:	MAP4 (MAP4 Products)
Background:	Synonyms: Microtubule-associated protein 4, MAP-4, MAP4 Background: Non-neuronal microtubule-associated protein. Promotes microtubule assembly.
Gene ID:	4134
UniProt:	P27816
Pathways:	p53 Signaling , Microtubule Dynamics

Application Details

Application Notes:	WB 1:300-5000 ELISA 1:500-1000 IHC-P 1:200-400 IHC-F 1:100-500 IF(IHC-P) 1:50-200 IF(IHC-F) 1:50-200 IF(ICC) 1:50-200
Restrictions:	For Research Use only

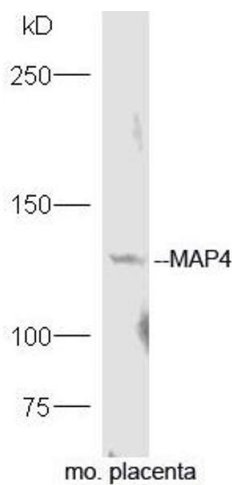
Handling

Format:	Liquid
Concentration:	1 µg/µL
Buffer:	0.01M TBS(pH 7.4) with 1 % BSA, 0.02 % Proclin300 and 50 % Glycerol.
Preservative:	ProClin
Precaution of Use:	This product contains ProClin: a POISONOUS AND HAZARDOUS SUBSTANCE, which should be handled by trained staff only.
Storage:	4 °C, -20 °C
Storage Comment:	Shipped at 4°C. Store at -20°C for one year. Avoid repeated freeze/thaw cycles.
Expiry Date:	12 months



Immunohistochemistry (Paraffin-embedded Sections)

Image 1. Formalin-fixed and paraffin embedded mouse embryo labeled with Rabbit Anti-MAP4 Polyclonal Antibody, Unconjugated (ABIN754243) at 1:200 followed by conjugation to the secondary antibody and DAB staining



Western Blotting

Image 2. Mouse placenta lysates probed with Rabbit Anti-MAP4 Polyclonal Antibody, Unconjugated (ABIN754243) at 1:300 overnight at 4°C. Followed by a conjugated secondary antibody at 1:5000 for 90 min at 37°C.