

Datasheet for ABIN7544664
TOX4 Protein (AA 1-621) (His tag)



[Go to Product page](#)

3 Images

Overview

| | |
|-------------------------------|---|
| Quantity: | 1 mg |
| Target: | TOX4 |
| Protein Characteristics: | AA 1-621 |
| Origin: | Human |
| Source: | HEK-293 Cells |
| Protein Type: | Recombinant |
| Purification tag / Conjugate: | This TOX4 protein is labelled with His tag. |

Product Details

| | |
|-----------|--|
| Purpose: | Custom-made recombinant TOX4 Protein expressed in mammalian cells. |
| Sequence: | <p>MEFPGGNDNY LTITGPSHPF LSGAETFHTP SLGDEEFEIP PISLSDPSL AVSDVVGHFD</p> <p>DLADPSSSQD GSFSQYGVQ TLDMPVGMTH GLMEQGGGLL SGGLTMDLDH SIGTQYSANP</p> <p>PVTIDVPM TD MTSGLMGHSQ LTTIDQSELS SQLGLSLGGG TILPPAQSP E DRLSTTPSPT</p> <p>SSLHEDGVED FRRQLPSQKT VVVEAGKKQK APKKRKKKDP NEPQKPVSA Y ALFFRDTQAA</p> <p>IKGQNP NATF GEVSKIVASM WDSLGE EQKQ VYKRKTEAAK KEYLKALAA Y KDNQECQATV</p> <p>ETVELDPAPP SQTSPPPPMA TVDPASPAPA SIEPPALSPS IVNSTLSSY VANQASSGAG</p> <p>GQPNITKLII TKQMLPSSIT MSQGGMVTVI PATVVT SRGL QLGQTSTATI QPSQQAQIVT</p> <p>RSVLQAAAAA AAAASMQ LPP PRLQPPPLQQ MPQPPTQQQV TILQQPPPLQ AMQQPPPQKV</p> <p>RINLQQQPPP LQIKSVPLPT LKMQTTLVPP TVESSPERPM NNSPEAHTVE APSPETICEM</p> <p>ITDVVPEVES PSQMDVELVS GSPVALSPQP RCVRSGCENP PIVSKDWDNE YCSNECVVKH</p> <p>CRDVFLAWVA SRNSNTVVFV K Sequence without tag. The proposed Purification-Tag is based on experiences with the expression system, a different complexity of the protein</p> |

could make another tag necessary. In case you have a special request, please contact us.

Specificity: If you are looking for a specific domain and are interested in a partial protein or a different isoform, please contact us regarding an individual offer.

Characteristics: **Key Benefits:**

- Made to order protein - from design to production - by highly experienced protein experts.
- Protein expressed in mammalian cells and purified in one-step affinity chromatography
- The optimized expression system ensures reliability for intracellular, secreted and transmembrane proteins.
- State-of-the-art algorithm used for plasmid design (Gene synthesis).

This protein is a made-to-order protein and will be made for the first time for your order. Our experts in the lab try to ensure that you receive soluble protein.

If you are not interested in a full length protein, please contact us for individual protein fragments.

The big advantage of ordering our made-to-order proteins in comparison to ordering custom made proteins from other companies is that there is no financial obligation in case the protein cannot be expressed or purified.

Purity: > 90 % as determined by Bis-Tris PAGE, anti-tag ELISA, Western Blot and analytical SEC (HPLC)

Grade: custom-made

Target Details

Target: TOX4

Alternative Name: TOX4 ([TOX4 Products](#))

Background: TOX high mobility group box family member 4 (Epidermal Langerhans cell protein LCP1),FUNCTION: Transcription factor that modulates cell fate reprogramming from the somatic state to the pluripotent and neuronal fate (By similarity). Component of the PTW/PP1 phosphatase complex, which plays a role in the control of chromatin structure and cell cycle progression during the transition from mitosis into interphase (PubMed:20516061). In liver, controls the expression of hormone-regulated gluconeogenic genes such as G6PC1 and PCK1. This regulation is independent of the insulin receptor activation (By similarity). {ECO:0000250|UniProtKB:Q8BU11, ECO:0000269|PubMed:20516061}.

Molecular Weight: 66.2 kDa

Target Details

UniProt: [O94842](#)

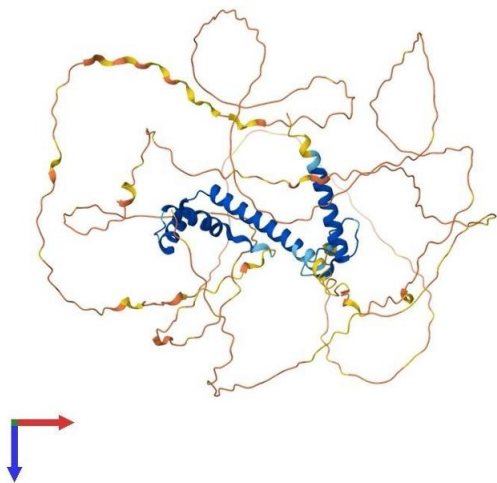
Application Details

| | |
|--------------------|---|
| Application Notes: | We expect the protein to work for functional studies. As the protein has not been tested for functional studies yet we cannot offer a guarantee though. |
| Restrictions: | For Research Use only |

Handling

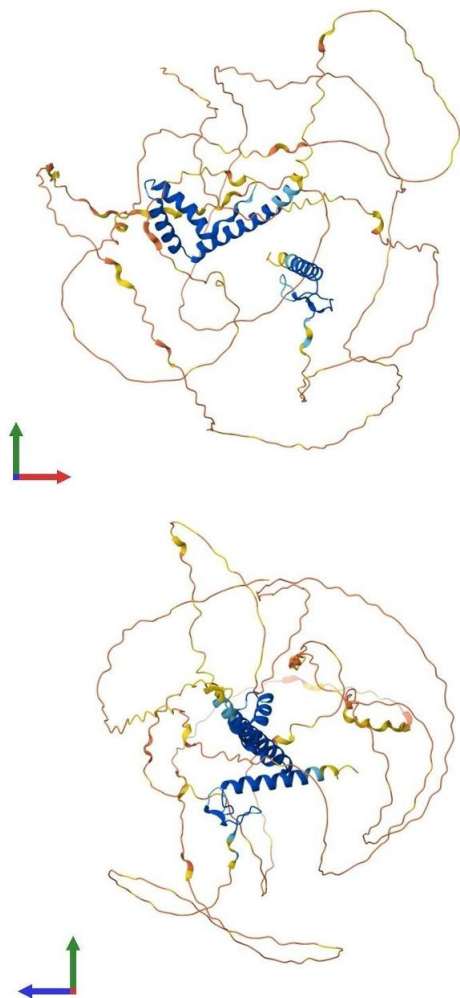
| | |
|------------------|--|
| Format: | Liquid |
| Buffer: | The buffer composition is at the discretion of the manufacturer. |
| Handling Advice: | Avoid repeated freeze-thaw cycles. |
| Storage: | -80 °C |
| Storage Comment: | Store at -80°C. |
| Expiry Date: | 12 months |

Images



Protein Structure

Image 1. AlphaFold protein structure prediction of Human Recombinant TOX4 Protein, UniProtID O94842



Protein Structure

Image 2. AlphaFold protein structure prediction of Human Recombinant TOX4 Protein, UniprotID O94842

Protein Structure

Image 3. AlphaFold protein structure prediction of Human Recombinant TOX4 Protein, UniprotID O94842