

Datasheet for ABIN754588
anti-PLCL1 antibody (AA 1001-1096)[Go to Product page](#)

1 Image

Overview

Quantity:	100 µL
Target:	PLCL1
Binding Specificity:	AA 1001-1096
Reactivity:	Mouse
Host:	Rabbit
Clonality:	Polyclonal
Conjugate:	This PLCL1 antibody is un-conjugated
Application:	Western Blotting (WB), ELISA, Immunofluorescence (Cultured Cells) (IF (cc)), Immunofluorescence (Paraffin-embedded Sections) (IF (p)), Immunohistochemistry (Paraffin-embedded Sections) (IHC (p)), Immunohistochemistry (Frozen Sections) (IHC (fro))

Product Details

Immunogen:	KLH conjugated synthetic peptide derived from human PLCL1
Isotype:	IgG
Specificity:	This antibody may exhibit a slight secondary cross-reactivity with PLCL2 due to a 69 % non-sequential sequence similarity over the immunogen range.
Cross-Reactivity:	Mouse
Predicted Reactivity:	Human,Rat,Dog,Cow,Pig,Horse
Purification:	Purified by Protein A.

Target Details

Target:	PLCL1
Alternative Name:	PLCL1 (PLCL1 Products)
Background:	<p>Synonyms: PLCL1, PLCE, Phospholipase C deleted in lung carcinoma, Phospholipase C epsilon, Phospholipase C like 1, Phospholipase C related but catalytically inactive protein, Phospholipase C related, but catalytically inactive protein, PLCE, PLCL, PRIP, Plcl1, C230017K02Rik, KIAA1092, PLC-L, PLC-L1, PLCE, PLCL, PRIP, PRIP-1, PLCL1_HUMAN.</p> <p>Background: PLCL1 is involved an inositol phospholipid based intracellular signaling cascade. Shows no PLC activity to phosphatidylinositol 4,5-bisphosphate and sphatidylinositol. Component in the dependent endocytosis process of GABA A receptor (By similarity). Regulates the turnover of receptors and thus contributes to the maintenance of GABA mediated synaptic inhibition. Its aberrant expression could contribute to the genesis and progression of lung carcinoma. Acts as an inhibitor of PPP1C.</p>
Gene ID:	5334

Application Details

Application Notes:	WB 1:300-5000 ELISA 1:500-1000 IHC-P 1:200-400 IHC-F 1:100-500 IF(IHC-P) 1:50-200 IF(IHC-F) 1:50-200 IF(ICC) 1:50-200
Restrictions:	For Research Use only

Handling

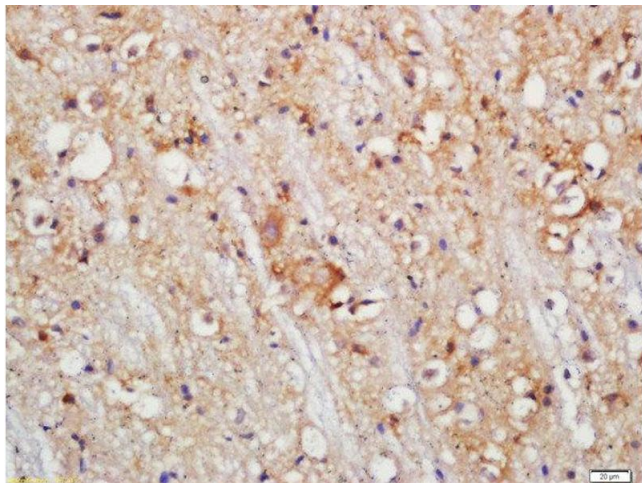
Format:	Liquid
Concentration:	1 µg/µL
Buffer:	0.01M TBS(pH 7.4) with 1 % BSA, 0.02 % Proclin300 and 50 % Glycerol.
Preservative:	ProClin
Precaution of Use:	This product contains ProClin: a POISONOUS AND HAZARDOUS SUBSTANCE, which should be handled by trained staff only.
Storage:	4 °C,-20 °C

Handling

Storage Comment: Shipped at 4°C. Store at -20°C for one year. Avoid repeated freeze/thaw cycles.

Expiry Date: 12 months

Images



Immunohistochemistry (Paraffin-embedded Sections)

Image 1. Formalin-fixed and paraffin embedded mouse brain labeled with Rabbit Anti-PLDL1 Polyclonal Antibody, Unconjugated (ABIN754588) at 1:200 followed by conjugation to the secondary antibody and DAB staining