

Datasheet for ABIN7547860

GAS2L3 Protein (AA 1-694) (His tag)



[Go to Product page](#)

3 Images

Overview

| | |
|-------------------------------|---|
| Quantity: | 1 mg |
| Target: | GAS2L3 |
| Protein Characteristics: | AA 1-694 |
| Origin: | Human |
| Source: | HEK-293 Cells |
| Protein Type: | Recombinant |
| Purification tag / Conjugate: | This GAS2L3 protein is labelled with His tag. |

Product Details

| | |
|-----------|---|
| Purpose: | Custom-made recombinant GAS2L3 Protein expressed in mammalian cells. |
| Sequence: | <p>MQPAIQVWFG EDLPLSPRSP LTPRHGPGLA NVCQYDEWIA VRHEATLLPM QEDLSIWLSG</p> <p>LLGIKVKA EK LLEELDNGVL LCQLIDVLQN MVKTCNSEES GNFPMRKVPC KKDAASGSFF</p> <p>ARDNTANFLH WCRDIGVDET YLFESEGLVL HKDPRQVYLC LLEIGRIVSR YGVEPPVLVK</p> <p>LEKEIELEET LLNTSGPEDS ISIPKSCCRH EELHEAVKHI AEDPPCSCSH RFSIEYLSEG</p> <p>RYRLGDKILF IRMLHGKHVM VRVGGGWDTL QGFLLYDPC RILQFATLEQ KILAFQKGVS</p> <p>NESVPDSPAR TPQPPEMNPL SAVNMFQKQN SKPSVPVSIP KSKEKQGRPP GALVPASSLK</p> <p>GGNLGMSVR SKLPNSPAAS SHPKLKSSKG ITKKPQAPSN NASSSLASLN PVGKNTSSPA</p> <p>LPRTAPCISE SPRKCISSPN TPKAKVIPAQ NSADLPESTL LPNKCSGKTQ PKYLKHNHIS</p> <p>SRDNAVSHLA AHSNSSSKCP KLPKANIPVR PKPSFQSSAK MTKTSSKTIA TGLGTQSQPS</p> <p>DGAPQAKPVP AQLKLSALNL NQPVSVSSVS PVKATQKSKD KNIVSATKKQ PQNKSAFQKT</p> <p>GPSSLKSPGR TPLSIVSLPQ SSTKTQTAPK SAQTVAKSQH STKGPPRS GK TPASIRKPPS</p> <p>SVKDADSGDK KPTAKKKEDD DHYFVMTGSK KPRK Sequence without tag. The proposed</p> |

Purification-Tag is based on experiences with the expression system, a different complexity of the protein could make another tag necessary. In case you have a special request, please contact us.

Specificity: If you are looking for a specific domain and are interested in a partial protein or a different isoform, please contact us regarding an individual offer.

Characteristics: Key Benefits:

- Made to order protein - from design to production - by highly experienced protein experts.
- Protein expressed in mammalian cells and purified in one-step affinity chromatography
- The optimized expression system ensures reliability for intracellular, secreted and transmembrane proteins.
- State-of-the-art algorithm used for plasmid design (Gene synthesis).

This protein is a made-to-order protein and will be made for the first time for your order. Our experts in the lab try to ensure that you receive soluble protein.

If you are not interested in a full length protein, please contact us for individual protein fragments.

The big advantage of ordering our made-to-order proteins in comparison to ordering custom made proteins from other companies is that there is no financial obligation in case the protein cannot be expressed or purified.

Purity: > 90 % as determined by Bis-Tris PAGE, anti-tag ELISA, Western Blot and analytical SEC (HPLC)

Grade: custom-made

Target Details

Target: GAS2L3

Alternative Name: GAS2L3 ([GAS2L3 Products](#))

Background: GAS2-like protein 3 (Growth arrest-specific protein 2-like 3),FUNCTION: Cytoskeletal linker protein. May promote and stabilize the formation of the actin and microtubule network. {ECO:0000269|PubMed:21561867}.

Molecular Weight: 75.2 kDa

UniProt: [Q86XJ1](#)

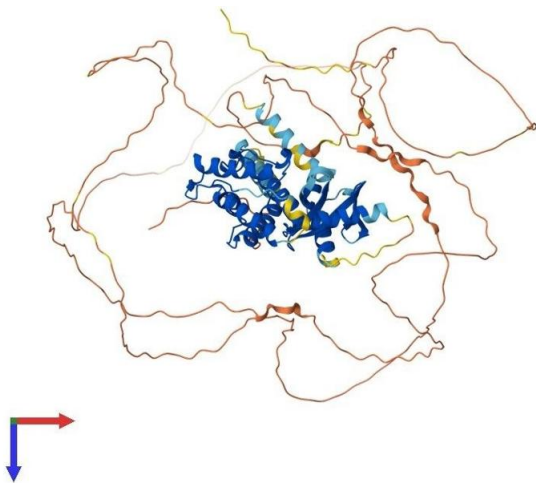
Application Details

| | |
|--------------------|---|
| Application Notes: | We expect the protein to work for functional studies. As the protein has not been tested for functional studies yet we cannot offer a guarantee though. |
| Restrictions: | For Research Use only |

Handling

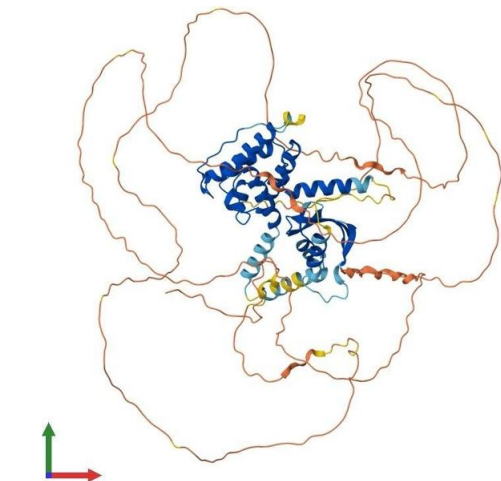
| | |
|------------------|--|
| Format: | Liquid |
| Buffer: | The buffer composition is at the discretion of the manufacturer. |
| Handling Advice: | Avoid repeated freeze-thaw cycles. |
| Storage: | -80 °C |
| Storage Comment: | Store at -80°C. |
| Expiry Date: | 12 months |

Images



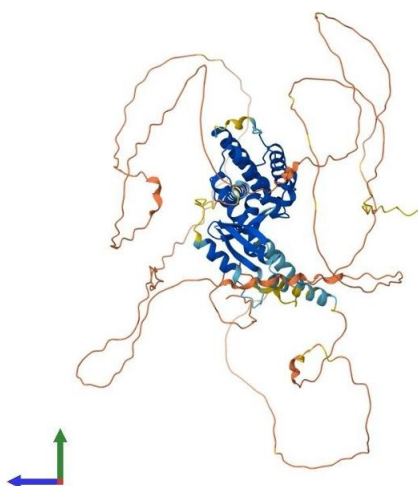
Protein Structure

Image 1. AlphaFold protein structure prediction of Human Recombinant GAS2L3 Protein, UniprotID Q86XJ1



Protein Structure

Image 2. AlphaFold protein structure prediction of Human Recombinant GAS2L3 Protein, UniprotID Q86XJ1



Protein Structure

Image 3. AlphaFold protein structure prediction of Human Recombinant GAS2L3 Protein, UniprotID Q86XJ1