

Datasheet for ABIN7548812
CKM Protein (AA 1-381) (His tag)



[Go to Product page](#)

3 Images

Overview

| | |
|-------------------------------|--|
| Quantity: | 1 mg |
| Target: | CKM |
| Protein Characteristics: | AA 1-381 |
| Origin: | Human |
| Source: | HEK-293 Cells |
| Protein Type: | Recombinant |
| Purification tag / Conjugate: | This CKM protein is labelled with His tag. |

Product Details

| | |
|------------------|--|
| Purpose: | Custom-made recombinant CKM Protein expressed in mammalian cells. |
| Sequence: | <p>MPFGNTHNKF KLNYPKEEY PDLSKHNNHM AKVLTLELYK KLRDKETPSG FTVDVVIQTG</p> <p>VDNPGHPFIM TVGCVAGDEE SYEVFKELFD PIISDRHGGY KPTDKHKTDL NHENLKGDD</p> <p>LDPNYVLSSR VRTGRSIKY TLPPhCSRGE RRAVEKLSVE ALNSLTGEFK GKYYPLKSMT</p> <p>EKEQQQLIDD HFLFDKPVSP LLLASGMARD WPDARGIWHN DNKSFLVWVN EEDHLRVISM</p> <p>EKGGMKEVF RRFCVGLQKI EEIFKKAGHP FMWNQHLGYV LTCPSNLGTG LRGGVHVKLA</p> <p>HLSKHPKFEE ILTRLRLQKR GTGGVDTAAV GSVFDVSNAD RLGSSEVEQV QLVVDGVKLM</p> <p>VEMEKKLEKG QSIDDMIPAQ K Sequence without tag. The proposed Purification-Tag is based on experiences with the expression system, a different complexity of the protein could make another tag necessary. In case you have a special request, please contact us.</p> |
| Specificity: | If you are looking for a specific domain and are interested in a partial protein or a different isoform, please contact us regarding an individual offer. |
| Characteristics: | Key Benefits: |

Product Details

- Made to order protein - from design to production - by highly experienced protein experts.
- Protein expressed in mammalian cells and purified in one-step affinity chromatography
- The optimized expression system ensures reliability for intracellular, secreted and transmembrane proteins.
- State-of-the-art algorithm used for plasmid design (Gene synthesis).

This protein is a made-to-order protein and will be made for the first time for your order. Our experts in the lab try to ensure that you receive soluble protein.

If you are not interested in a full length protein, please contact us for individual protein fragments.

The big advantage of ordering our made-to-order proteins in comparison to ordering custom made proteins from other companies is that there is no financial obligation in case the protein cannot be expressed or purified.

| | |
|---------|---|
| Purity: | > 90 % as determined by Bis-Tris PAGE, anti-tag ELISA, Western Blot and analytical SEC (HPLC) |
| Grade: | custom-made |

Target Details

| | |
|-------------------|--|
| Target: | CKM |
| Alternative Name: | CKM (CKM Products) |
| Background: | Creatine kinase M-type (EC 2.7.3.2) (Creatine kinase M chain) (Creatine phosphokinase M-type) (CPK-M) (M-CK),FUNCTION: Reversibly catalyzes the transfer of phosphate between ATP and various phosphogens (e.g. creatine phosphate). Creatine kinase isoenzymes play a central role in energy transduction in tissues with large, fluctuating energy demands, such as skeletal muscle, heart, brain and spermatozoa. {ECO:0000250 UniProtKB:P00563}. |
| Molecular Weight: | 43.1 kDa |
| UniProt: | P06732 |

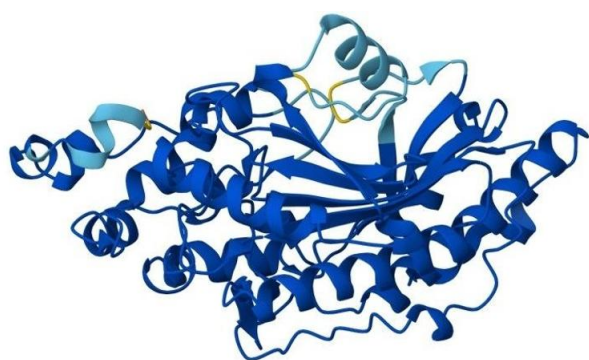
Application Details

| | |
|--------------------|---|
| Application Notes: | We expect the protein to work for functional studies. As the protein has not been tested for functional studies yet we cannot offer a guarantee though. |
| Restrictions: | For Research Use only |

Handling

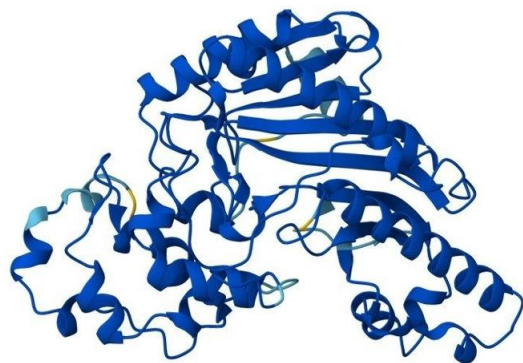
| | |
|------------------|--|
| Format: | Liquid |
| Buffer: | The buffer composition is at the discretion of the manufacturer. |
| Handling Advice: | Avoid repeated freeze-thaw cycles. |
| Storage: | -80 °C |
| Storage Comment: | Store at -80°C. |
| Expiry Date: | 12 months |

Images



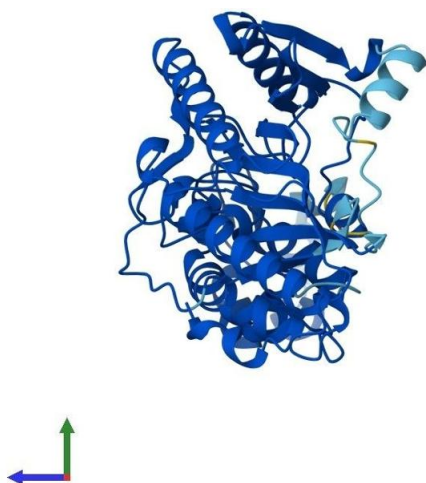
Protein Structure

Image 1. AlphaFold protein structure prediction of Human Recombinant CKM Protein, UniprotID P06732



Protein Structure

Image 2. AlphaFold protein structure prediction of Human Recombinant CKM Protein, UniprotID P06732



Protein Structure

Image 3. AlphaFold protein structure prediction of Human Recombinant CKM Protein, UniprotID P06732