

Datasheet for ABIN7549096

## LSR Protein (AA 1-649) (His tag)



[Go to Product page](#)

### 3 Images

#### Overview

Quantity:	1 mg
Target:	LSR
Protein Characteristics:	AA 1-649
Origin:	Human
Source:	HEK-293 Cells
Protein Type:	Recombinant
Purification tag / Conjugate:	This LSR protein is labelled with His tag.

#### Product Details

Purpose:	Custom-made recombinant LSR Protein expressed in mammalian cells.
Sequence:	<p>             MQQDGLGVGT RENGSGKGRSV HPSWPWCAPR PLRYFGRDAR ARRAQTAAMA LLAGGLSRGL              GSHPAAGRD AVFVWLLLS TWCTAPARAI QVTVSNPYHV VILFQPVTLF CTYQMTSTPT              QPIVIWKYKS FCRDRIADAF SPASVDNQLN AQLAAGNPGY NPYVECQDSV RTRRVVATKQ              GNAVTLGDYY QGRRITITGN ADLTFDQTAW GDSGVYYCSV VSAQDLQGNN EAYAEILVLG              RTSGVAELLF GFQAGPIEDW LFVVVVCLAA FLIFLLLGIC WCQCCPHTCC CYVRCPCCPD              KCCCPEALYA AGKAATSGVP SIYAPSTYAH LSPAKTPPPP AMIPMGPAYN GYPGGYPGDV              DRSSSAGGQG SYVPLLRDTD SSVASEVRSG YRIQASQQDD SMRVLYYMEK ELANFDPSRP              GPPSGRVERA MSEVTSLEDH DWRSRPSRGP ALTPIRDEEW GGHSRSPRG WDQEPAREQA              GGGWRARRPR ARSVDALDDL TPPSTAESGS RSPTSNGGRS RAYMPPRSRS RDDLYDQDDS              RDFPRSRDPH YDDFRSRERP PADPRSHHR TRDPRDNGSR SGDLPYDGRL LEEAVRKKGS              EERRRPHKEE EEEAYPPAP PPYSETDSQA SRERRLKKNL ALSRESLVV <b>Sequence without tag.</b>  <b>The proposed Purification-Tag is based on experiences with the expression system, a</b> </p>

**different complexity of the protein could make another tag necessary. In case you have a special request, please contact us.**

**Specificity:** If you are looking for a specific domain and are interested in a partial protein or a different isoform, please contact us regarding an individual offer.

**Characteristics:** Key Benefits:

- Made to order protein - from design to production - by highly experienced protein experts.
- Protein expressed in mammalian cells and purified in one-step affinity chromatography
- The optimized expression system ensures reliability for intracellular, secreted and transmembrane proteins.
- State-of-the-art algorithm used for plasmid design (Gene synthesis).

This protein is a made-to-order protein and will be made for the first time for your order. Our experts in the lab try to ensure that you receive soluble protein.

If you are not interested in a full length protein, please contact us for individual protein fragments.

The big advantage of ordering our made-to-order proteins in comparison to ordering custom made proteins from other companies is that there is no financial obligation in case the protein cannot be expressed or purified.

**Purity:** > 90 % as determined by Bis-Tris PAGE, anti-tag ELISA, Western Blot and analytical SEC (HPLC)

**Grade:** custom-made

## Target Details

**Target:** LSR

**Alternative Name:** LSR ([LSR Products](#))

**Background:** Lipolysis-stimulated lipoprotein receptor (Angulin-1),FUNCTION: Probable role in the clearance of triglyceride-rich lipoprotein from blood. Binds chylomicrons, LDL and VLDL in presence of free fatty acids and allows their subsequent uptake in the cells (By similarity). Maintains epithelial barrier function by recruiting MARVELD2/tricellulin to tricellular tight junctions (By similarity). {ECO:0000250|UniProtKB:Q99KG5, ECO:0000250|UniProtKB:Q9WU74}.

**Molecular Weight:** 71.4 kDa

**UniProt:** [Q86X29](#)

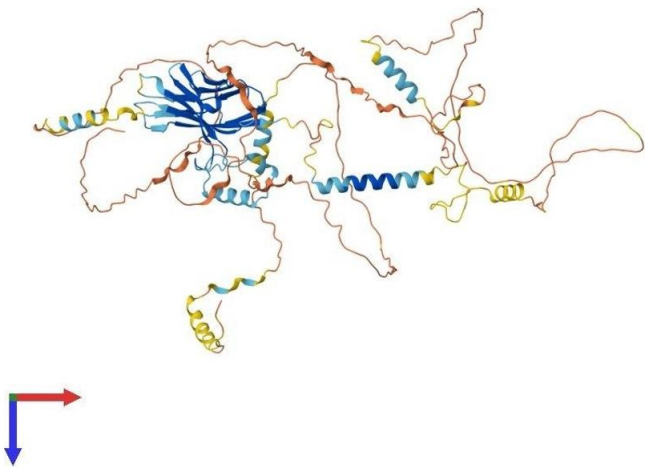
## Application Details

Application Notes:	We expect the protein to work for functional studies. As the protein has not been tested for functional studies yet we cannot offer a guarantee though.
Restrictions:	For Research Use only

## Handling

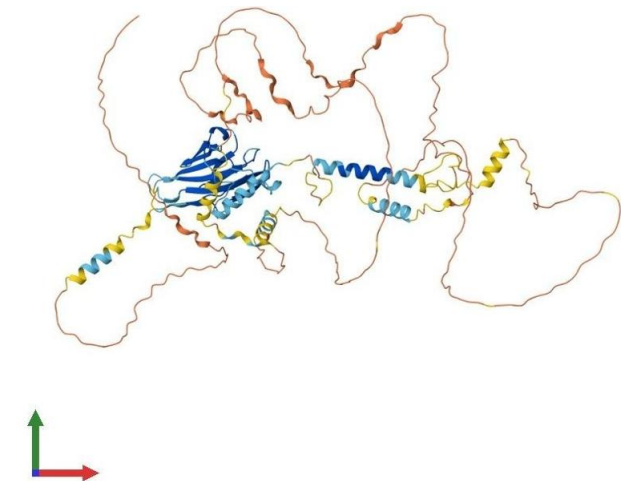
Format:	Liquid
Buffer:	The buffer composition is at the discretion of the manufacturer.
Handling Advice:	Avoid repeated freeze-thaw cycles.
Storage:	-80 °C
Storage Comment:	Store at -80°C.
Expiry Date:	12 months

## Images



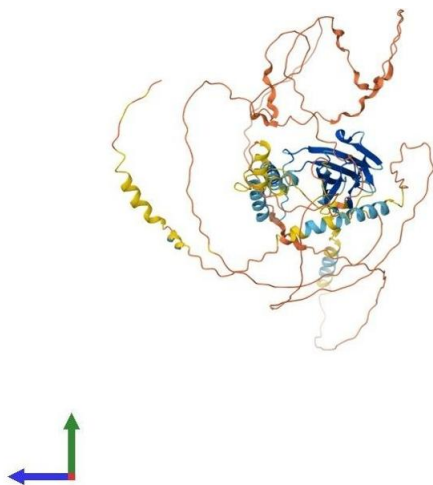
### Protein Structure

**Image 1.** AlphaFold protein structure prediction of Human Recombinant LSR Protein, UniprotID Q86X29



### Protein Structure

**Image 2.** AlphaFold protein structure prediction of Human Recombinant LSR Protein, UniprotID Q86X29



#### Protein Structure

**Image 3.** AlphaFold protein structure prediction of Human Recombinant LSR Protein, UniprotID Q86X29