

Datasheet for ABIN7549232

MAS1L Protein (AA 1-378) (His tag)



[Go to Product page](#)

3 Images

Overview

Quantity:	1 mg
Target:	MAS1L
Protein Characteristics:	AA 1-378
Origin:	Human
Source:	HEK-293 Cells
Protein Type:	Recombinant
Purification tag / Conjugate:	This MAS1L protein is labelled with His tag.

Product Details

Purpose:	Custom-made recombinant MAS1L Protein expressed in mammalian cells.
Sequence:	<p>MVWGKICWFS QRAGWTVFAE SQISLSCSLC LHSGDQEAQN PNLVSQLCGV FLQNETNETI HMQMMSMAVGQ QALPLNIIAP KAVLVSLCGV LLNGTVFWLL CCGATNPYMV YILHLVAADV IYLCCSAVGF LQVTLITYHG VVFFIPDFLA ILSPFSFEVC LCLLVAISTE RCVCVLFPIW YRCHRPKYTS NVVCTLIWGL PFCINIVKSL FLTYYWKHVKA CVIFLKL SGL FHAILSLVMC VSSLTLLIRF LCCSQQKAT RYVAVVQISA PMFLLWALPL SVAPLITDFK MFVTTSYLIS LFLIINSSAN PIYFFVGSL RKKRLKESLR VILQRALADK PEVGRNKKAA GIDPMEQPHS TQHVENLLPR EHRVDVET</p> <p>Sequence without tag. The proposed Purification-Tag is based on experiences with the expression system, a different complexity of the protein could make another tag necessary. In case you have a special request, please contact us.</p>
Specificity:	If you are looking for a specific domain and are interested in a partial protein or a different isoform, please contact us regarding an individual offer.
Characteristics:	Key Benefits:

Product Details

- Made to order protein - from design to production - by highly experienced protein experts.
- Protein expressed in mammalian cells and purified in one-step affinity chromatography
- The optimized expression system ensures reliability for intracellular, secreted and transmembrane proteins.
- State-of-the-art algorithm used for plasmid design (Gene synthesis).

This protein is a made-to-order protein and will be made for the first time for your order. Our experts in the lab try to ensure that you receive soluble protein.

If you are not interested in a full length protein, please contact us for individual protein fragments.

The big advantage of ordering our made-to-order proteins in comparison to ordering custom made proteins from other companies is that there is no financial obligation in case the protein cannot be expressed or purified.

Purity:	> 90 % as determined by Bis-Tris PAGE, anti-tag ELISA, Western Blot and analytical SEC (HPLC)
Grade:	custom-made

Target Details

Target:	MAS1L
Alternative Name:	MAS1L (MAS1L Products)
Background:	Mas-related G-protein coupled receptor MRG (MAS-R) (MAS1-like)
Molecular Weight:	42.4 kDa
UniProt:	P35410

Application Details

Application Notes:	We expect the protein to work for functional studies. As the protein has not been tested for functional studies yet we cannot offer a guarantee though.
Restrictions:	For Research Use only

Handling

Format:	Liquid
Buffer:	The buffer composition is at the discretion of the manufacturer.

Handling

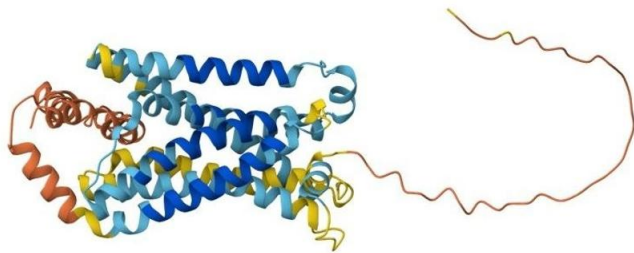
Handling Advice: Avoid repeated freeze-thaw cycles.

Storage: -80 °C

Storage Comment: Store at -80°C.

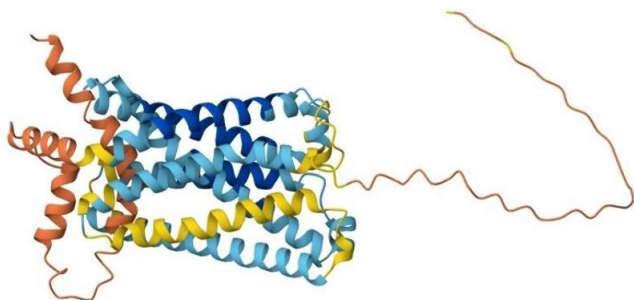
Expiry Date: 12 months

Images



Protein Structure

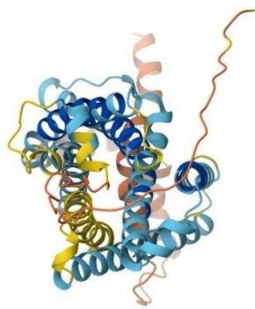
Image 1. AlphaFold protein structure prediction of Human Recombinant MAS1L Protein, UniprotID P35410



Protein Structure

Image 2. AlphaFold protein structure prediction of Human Recombinant MAS1L Protein, UniprotID P35410





Protein Structure

Image 3. AlphaFold protein structure prediction of Human Recombinant MAS1L Protein, UniprotID P35410