



[Go to Product page](#)

Datasheet for ABIN755128

## anti-SGPL1 antibody (AA 301-400)

1 Image

1 Publication

### Overview

Quantity:	100 µL
Target:	SGPL1
Binding Specificity:	AA 301-400
Reactivity:	Human, Mouse, Rat
Host:	Rabbit
Clonality:	Polyclonal
Conjugate:	This SGPL1 antibody is un-conjugated
Application:	ELISA, Immunohistochemistry (Paraffin-embedded Sections) (IHC (p)), Flow Cytometry (FACS), Immunofluorescence (Cultured Cells) (IF (cc)), Immunofluorescence (Paraffin-embedded Sections) (IF (p)), Immunohistochemistry (Frozen Sections) (IHC (fro))

### Product Details

Immunogen:	KLH conjugated synthetic peptide derived from human SGPL1
Isotype:	IgG
Cross-Reactivity:	Human, Mouse, Rat
Predicted Reactivity:	Dog,Cow,Pig,Horse,Rabbit
Purification:	Purified by Protein A.

### Target Details

Target:	SGPL1
---------	-------

## Target Details

---

Alternative Name:	SGPL1 ( <a href="#">SGPL1 Products</a> )
Background:	Synonyms: SPL, S1PL, Sphingosine-1-phosphate lyase 1, SP-lyase 1, SPL 1, hSPL, Sphingosine-1-phosphate aldolase, SGPL1, KIAA1252 Background: Cleaves phosphorylated sphingoid bases (PSBs), such as sphingosine-1-phosphate, into fatty aldehydes and phosphoethanolamine. Elevates stress-induced ceramide production and apoptosis.
Gene ID:	8879
UniProt:	<a href="#">O95470</a>
Pathways:	<a href="#">Platelet-derived growth Factor Receptor Signaling</a>

## Application Details

---

Application Notes:	ELISA 1:500-1000 FCM 1:20-100 IHC-P 1:200-400 IHC-F 1:100-500 IF(IHC-P) 1:50-200 IF(IHC-F) 1:50-200 IF(ICC) 1:50-200
Restrictions:	For Research Use only

## Handling

---

Format:	Liquid
Concentration:	1 µg/µL
Buffer:	0.01M TBS( pH 7.4) with 1 % BSA, 0.02 % Proclin300 and 50 % Glycerol.
Preservative:	ProClin
Precaution of Use:	This product contains ProClin: a POISONOUS AND HAZARDOUS SUBSTANCE, which should be handled by trained staff only.
Storage:	4 °C, -20 °C
Storage Comment:	Shipped at 4°C. Store at -20°C for one year. Avoid repeated freeze/thaw cycles.
Expiry Date:	12 months

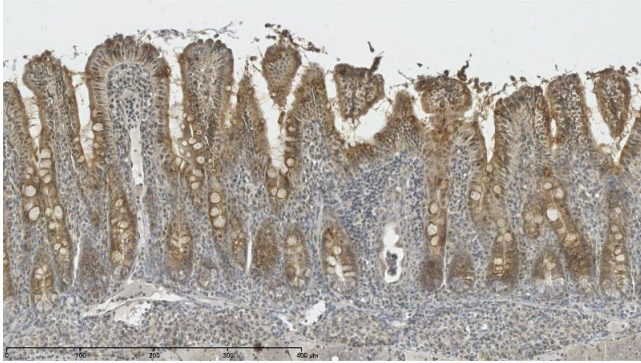
## Publications

---

Product cited in: Choi, de Poot, Lee, Kim, Han, Kim, Finley, Lee: "Open-gate mutants of the mammalian proteasome show enhanced ubiquitin-conjugate degradation." in: **Nature communications**, Vol. 7, pp. 10963, (2016) ([PubMed](#)).

## Images

---



### Immunohistochemistry (Paraffin-embedded Sections)

**Image 1.** This image was kindly submitted by Josh Boyer of the Rivera Lab at UCSD. Mouse ileum paraffin sections stained with anti-SGPL1-biotinylated antibody (Biotin) at 1:100 dilution in PBT buffer (1X PBS, 0.5% BSA, 0.5% Tween20) overnight followed with Vector Labs ABC (PK-6200) and DAB (SK-4105) reagents according to manufacturer's protocol.