



Datasheet for ABIN755248  
**anti-PTGER2 antibody (AA 271-358)**



[Go to Product page](#)

3 Images

3 Publications

## Overview

Quantity:	100 µL
Target:	PTGER2
Binding Specificity:	AA 271-358
Reactivity:	Human, Mouse, Sheep
Host:	Rabbit
Clonality:	Polyclonal
Conjugate:	This PTGER2 antibody is un-conjugated
Application:	Western Blotting (WB), ELISA, Flow Cytometry (FACS), Immunofluorescence (Paraffin-embedded Sections) (IF (p)), Immunofluorescence (Cultured Cells) (IF (cc)), Immunohistochemistry (Frozen Sections) (IHC (fro))

## Product Details

Immunogen:	KLH conjugated synthetic peptide derived from human Prostaglandin E Receptor EP2
Isotype:	IgG
Cross-Reactivity:	Human, Mouse, Sheep
Predicted Reactivity:	Rat,Dog,Cow,Pig,Rabbit
Purification:	Purified by Protein A.

## Target Details

Target:	PTGER2
---------	--------

## Target Details

---

Abstract: [PTGER2 Products](#)

---

Background: Synonyms: EP2, Prostaglandin E2 receptor EP2 subtype, PGE receptor EP2 subtype, PGE2 receptor EP2 subtype, Prostanoid EP2 receptor, PTGER2  
Background: Receptor for prostaglandin E2 (PGE2). The activity of this receptor is mediated by G(s) proteins that stimulate adenylate cyclase. The subsequent raise in intracellular cAMP is responsible for the relaxing effect of this receptor on smooth muscle.

---

Gene ID: 5732

---

UniProt: [P43116](#)

---

## Application Details

---

Application Notes: WB 1:300-5000  
ELISA 1:500-1000  
FCM 1:20-100  
IHC-F 1:100-500  
IF(IHC-P) 1:50-200  
IF(IHC-F) 1:50-200  
IF(ICC) 1:50-200

---

Restrictions: For Research Use only

---

## Handling

---

Format: Liquid

---

Concentration: 1 µg/µL

---

Buffer: 0.01M TBS( pH 7.4) with 1 % BSA, 0.02 % Proclin300 and 50 % Glycerol.

---

Preservative: ProClin

---

Precaution of Use: This product contains ProClin: a POISONOUS AND HAZARDOUS SUBSTANCE, which should be handled by trained staff only.

---

Storage: 4 °C,-20 °C

---

Storage Comment: Shipped at 4°C. Store at -20°C for one year. Avoid repeated freeze/thaw cycles.

---

Expiry Date: 12 months

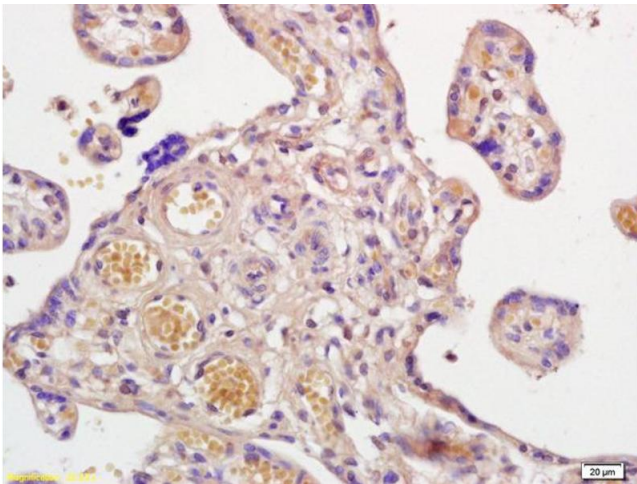
---

## Publications

Product cited in: Takemiya, Takeuchi, Kawakami: "Microsomal Prostaglandin E Synthase-1 Facilitates an Intercellular Interaction between CD4<sup>+</sup> T Cells through IL-1 $\beta$  Autocrine Function in Experimental Autoimmune Encephalomyelitis." in: **International journal of molecular sciences**, Vol. 18, Issue 12, (2018) ([PubMed](#)).

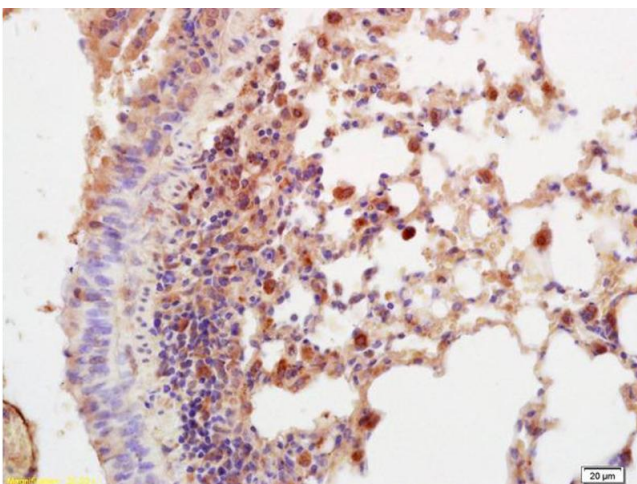
Müller, Schwab, Rosenfeld, Antonow-Schlorke, Nathanielsz, Rakers, Schubert, Witte, Rupprecht: "Fetal Sheep Mesenteric Resistance Arteries: Functional and Structural Maturation." in: **Journal of vascular research**, Vol. 54, Issue 5, pp. 259-271, (2017) ([PubMed](#)).

## Images



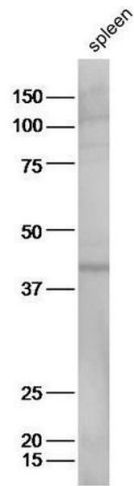
### Immunohistochemistry

**Image 1.** Formalin-fixed and paraffin embedded human placenta labeled with Anti-Prostaglandin E Receptor EP2 Polyclonal Antibody, Unconjugated (ABIN755248) at 1:200 followed by conjugation to the secondary antibody and DAB staining.



### Immunohistochemistry

**Image 2.** Formalin-fixed and paraffin embedded mouse lung labeled with Anti-Prostaglandin E Receptor EP2 Polyclonal Antibody, Unconjugated (ABIN755248) at 1:200 followed by conjugation to the secondary antibody and DAB staining.



### Western Blotting

**Image 3.** Mouse spleen lysates probed with Anti-Prostaglandin E Receptor EP2 Polyclonal Antibody, Unconjugated at 1:5000 90min in 37°C.