

Datasheet for ABIN755287  
**anti-KAT2B antibody (AA 451-550)**

## 3 Images

[Go to Product page](#)

## Overview

Quantity:	100 µL
Target:	KAT2B
Binding Specificity:	AA 451-550
Reactivity:	Human, Rat
Host:	Rabbit
Clonality:	Polyclonal
Conjugate:	This KAT2B antibody is un-conjugated
Application:	Western Blotting (WB), ELISA, Flow Cytometry (FACS), Immunofluorescence (Cultured Cells) (IF (cc)), Immunofluorescence (Paraffin-embedded Sections) (IF (p)), Immunohistochemistry (Paraffin-embedded Sections) (IHC (p)), Immunohistochemistry (Frozen Sections) (IHC (fro))

## Product Details

Immunogen:	KLH conjugated synthetic peptide derived from human KAT2B
Isotype:	IgG
Cross-Reactivity:	Human, Rat
Predicted Reactivity:	Mouse,Dog,Pig,Horse,Chicken
Purification:	Purified by Protein A.

## Target Details

Target:	KAT2B
---------	-------

## Target Details

Alternative Name: Kat2b ([KAT2B Products](#))

Background: Synonyms: HYRC, p350, DNAPK, DNPK1, HYRC1, IMD26, XRCC7, DNA-PKcs, DNA-dependent protein kinase catalytic subunit, DNA-PK catalytic subunit, p460, PRKDC

Background: Serine/threonine-protein kinase that acts as a molecular sensor for DNA damage. Involved in DNA non-homologous end joining (NHEJ) required for double-strand break (DSB) repair and V(D)J recombination. Must be bound to DNA to express its catalytic properties. Promotes processing of hairpin DNA structures in V(D)J recombination by activation of the hairpin endonuclease artemis (DCLRE1C). The assembly of the DNA-PK complex at DNA ends is also required for the NHEJ ligation step. Required to protect and align broken ends of DNA. May also act as a scaffold protein to aid the localization of DNA repair proteins to the site of damage. Found at the ends of chromosomes, suggesting a further role in the maintenance of telomeric stability and the prevention of chromosomal end fusion. Also involved in modulation of transcription. Recognizes the substrate consensus sequence [ST]-Q. Phosphorylates 'Ser-139' of histone variant H2AX/H2AFX, thereby regulating DNA damage response mechanism. Phosphorylates DCLRE1C, c-Abl/ABL1, histone H1, HSPCA, c-jun/JUN, p53/TP53, PARP1, POU2F1, DHX9, SRF, XRCC1, XRCC1, XRCC4, XRCC5, XRCC6, WRN, MYC and RFA2. Can phosphorylate C1D not only in the presence of linear DNA but also in the presence of supercoiled DNA. Ability to phosphorylate p53/TP53 in the presence of supercoiled DNA is dependent on C1D. Contributes to the determination of the circadian period length by antagonizing phosphorylation of CRY1 'Ser-588' and increasing CRY1 protein stability, most likely through an indirect mechanism. Interacts with CRY1 and CRY2, negatively regulates CRY1 phosphorylation.

Gene ID: 5591

UniProt: [P78527](#)

Pathways: [p53 Signaling](#), [Regulation of Carbohydrate Metabolic Process](#)

## Application Details

Application Notes: WB 1:300-5000

ELISA 1:500-1000

FCM 1:20-100

IHC-P 1:200-400

IHC-F 1:100-500

IF(IHC-P) 1:50-200

IF(IHC-F) 1:50-200

## Application Details

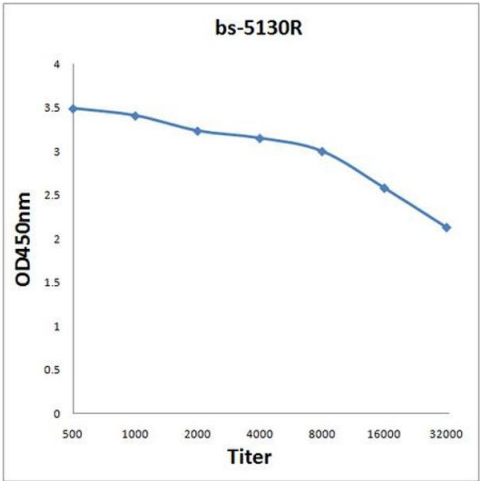
IF(ICC) 1:50-200

Restrictions: For Research Use only

## Handling

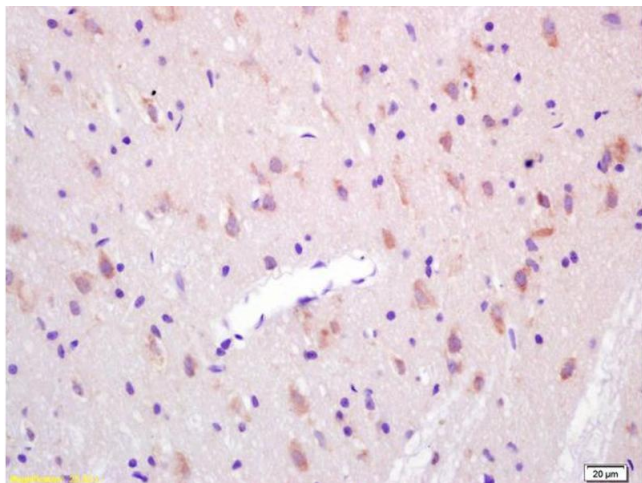
Format:	Liquid
Concentration:	1 µg/µL
Buffer:	0.01M TBS( pH 7.4) with 1 % BSA, 0.02 % Proclin300 and 50 % Glycerol.
Preservative:	ProClin
Precaution of Use:	This product contains ProClin: a POISONOUS AND HAZARDOUS SUBSTANCE, which should be handled by trained staff only.
Storage:	4 °C,-20 °C
Storage Comment:	Shipped at 4°C. Store at -20°C for one year. Avoid repeated freeze/thaw cycles.
Expiry Date:	12 months

## Images



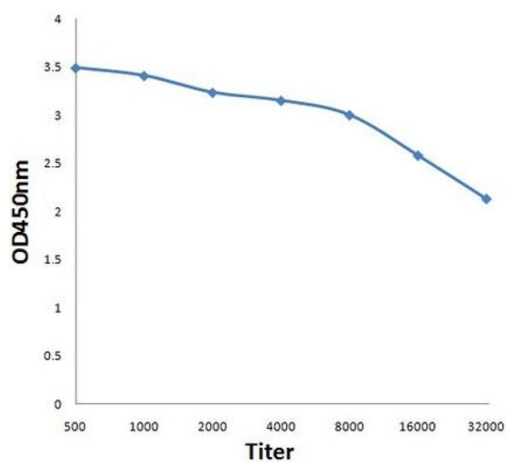
### ELISA

**Image 1.** Antigen: 0.2 µg/100 µL Primary: Antiserum, 1:500, 1:1000, 1:2000, 1:4000, 1:8000, 1:16000, 1:32000; Secondary: HRP conjugated Goat-Anti-Rabbit IgG at 1: 5000; TMB staining; Read the data in MicroplateReader by 450



### Immunohistochemistry

**Image 2.** Formalin-fixed and paraffin embedded rat brain labeled with Anti-KAT2B/ GCN5/PCAF Polyclonal Antibody, Unconjugated (ABIN755287) at 1:200 followed by conjugation to the secondary antibody and DAB staining.



### ELISA

**Image 3.** Antigen: 0.2ug/100ul, Primary: Antiserum, 1:500, 1:1000, 1:2000, 1:4000, 1:8000, 1:16000, 1:32000, Secondary: HRP conjugated Goat-Anti-Rabbit IgG at 1: 5000, TMB staining, Read the data in MicroplateReader by 450nm