

Datasheet for ABIN7553297
CD20 Protein (AA 1-297) (His tag)



[Go to Product page](#)

3 Images

Overview

Quantity:	1 mg
Target:	CD20 (MS4A1)
Protein Characteristics:	AA 1-297
Origin:	Human
Source:	HEK-293 Cells
Protein Type:	Recombinant
Purification tag / Conjugate:	This CD20 protein is labelled with His tag.

Product Details

Purpose:	Custom-made recombinant MS4A1 Protein expressed in mammalian cells.
Sequence:	<p>MTTPRNSVNG TFPAEPMKGP IAMQSGPKPL FRRMSSLVGP TQSFFMRESK TLGAVQIMNG</p> <p>LFHIALGGLL MIPAGIYAPI CVTVWYPLWG GIMYIISGSL LAATEKNSRK CLVKGKMIMN</p> <p>SLSLFAAISG MILSIMDILN IKISHFLKME SLNFIRAHTP YINIYNCEPA NPSEKNPST QYCYSIQSLF</p> <p>LGILSVMLIF AFFQELVIAG IVENEWKRTC SRPKSNIVLL SAEKKEQTI EIKEEVVGLT</p> <p>ETSSQPKNEE DIEIPIQEE EEEETETNFP EPPQDQESSP IENDSSP Sequence without tag. The proposed Purification-Tag is based on experiences with the expression system, a different complexity of the protein could make another tag necessary. In case you have a special request, please contact us.</p>
Specificity:	If you are looking for a specific domain and are interested in a partial protein or a different isoform, please contact us regarding an individual offer.
Characteristics:	Key Benefits:

Product Details

- Made to order protein - from design to production - by highly experienced protein experts.
- Protein expressed in mammalian cells and purified in one-step affinity chromatography
- The optimized expression system ensures reliability for intracellular, secreted and transmembrane proteins.
- State-of-the-art algorithm used for plasmid design (Gene synthesis).

This protein is a made-to-order protein and will be made for the first time for your order. Our experts in the lab try to ensure that you receive soluble protein.

If you are not interested in a full length protein, please contact us for individual protein fragments.

The big advantage of ordering our made-to-order proteins in comparison to ordering custom made proteins from other companies is that there is no financial obligation in case the protein cannot be expressed or purified.

Purity:	> 90 % as determined by Bis-Tris PAGE, anti-tag ELISA, Western Blot and analytical SEC (HPLC)
Grade:	custom-made

Target Details

Target:	CD20 (MS4A1)
Alternative Name:	MS4A1 (MS4A1 Products)
Background:	<p>B-lymphocyte antigen CD20 (B-lymphocyte surface antigen B1) (Bp35) (Leukocyte surface antigen Leu-16) (Membrane-spanning 4-domains subfamily A member 1) (CD antigen CD20),FUNCTION: B-lymphocyte-specific membrane protein that plays a role in the regulation of cellular calcium influx necessary for the development, differentiation, and activation of B-lymphocytes (PubMed:3925015, PubMed:7684739, PubMed:12920111). Functions as a store-operated calcium (SOC) channel component promoting calcium influx after activation by the B-cell receptor/BCR (PubMed:7684739, PubMed:12920111, PubMed:18474602).</p> <p>{ECO:0000269 PubMed:12920111, ECO:0000269 PubMed:18474602, ECO:0000269 PubMed:3925015, ECO:0000269 PubMed:7684739}.</p>
Molecular Weight:	33.1 kDa
UniProt:	P11836

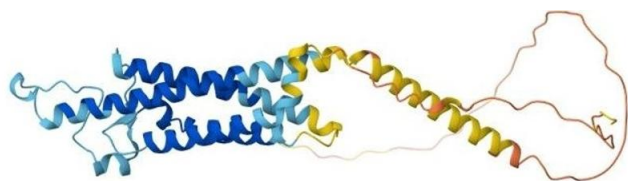
Application Details

Application Notes:	We expect the protein to work for functional studies. As the protein has not been tested for functional studies yet we cannot offer a guarantee though.
Restrictions:	For Research Use only

Handling

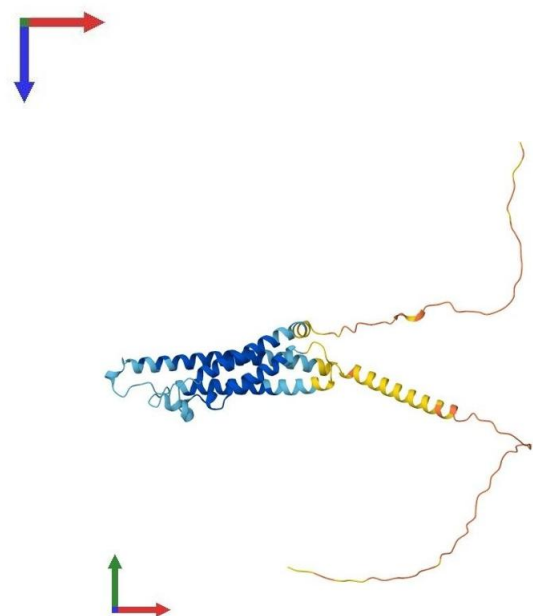
Format:	Liquid
Buffer:	The buffer composition is at the discretion of the manufacturer.
Handling Advice:	Avoid repeated freeze-thaw cycles.
Storage:	-80 °C
Storage Comment:	Store at -80°C.
Expiry Date:	12 months

Images



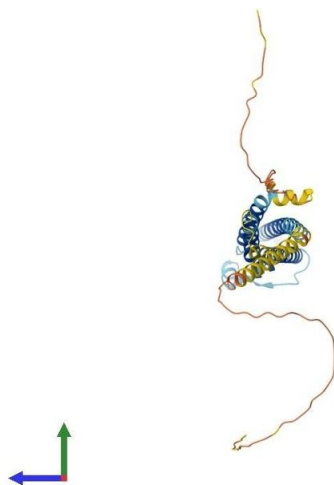
Protein Structure

Image 1. AlphaFold protein structure prediction of Human Recombinant MS4A1 Protein, UniprotID P11836



Protein Structure

Image 2. AlphaFold protein structure prediction of Human Recombinant MS4A1 Protein, UniprotID P11836



Protein Structure

Image 3. AlphaFold protein structure prediction of Human Recombinant MS4A1 Protein, UniprotID P11836