

Datasheet for ABIN7553299
CD38 Protein (AA 1-300) (His tag)



[Go to Product page](#)

3 Images

Overview

Quantity:	1 mg
Target:	CD38
Protein Characteristics:	AA 1-300
Origin:	Human
Source:	HEK-293 Cells
Protein Type:	Recombinant
Purification tag / Conjugate:	This CD38 protein is labelled with His tag.

Product Details

Purpose:	Custom-made recombinant CD38 Protein expressed in mammalian cells.
Sequence:	<p>MANCEFSPVS GDKPCCRLSR RAQLCLGVSI LVLILVVLA VVPRWRQQW SGPGTTKRFP</p> <p>ETVLARCVKY TEIHPEMRHV DCQSVWDAFK GAFISKHPCN ITEEDYQPLM KLGTQTVPCN</p> <p>KILLWSRIKD LAHQFTQVQR DMFTLEDTL L GYLADDLTWC GEFNTSKINY QSCPDWRKDC</p> <p>SNNPVSVFWK TVSRRFAEAA CDVVHVMLNG SRSKIFDKNS TFGSVEVHNL QPEKVQTLEA</p> <p>WVIHGGREDS RDLCDQPTIK ELESISKRN IQFSCKNIYR PDKFLQCVKN PEDSSCTSEI Sequence without tag. The proposed Purification-Tag is based on experiences with the expression system, a different complexity of the protein could make another tag necessary. In case you have a special request, please contact us.</p>
Specificity:	If you are looking for a specific domain and are interested in a partial protein or a different isoform, please contact us regarding an individual offer.
Characteristics:	Key Benefits:

Product Details

- Made to order protein - from design to production - by highly experienced protein experts.
- Protein expressed in mammalian cells and purified in one-step affinity chromatography
- The optimized expression system ensures reliability for intracellular, secreted and transmembrane proteins.
- State-of-the-art algorithm used for plasmid design (Gene synthesis).

This protein is a made-to-order protein and will be made for the first time for your order. Our experts in the lab try to ensure that you receive soluble protein.

If you are not interested in a full length protein, please contact us for individual protein fragments.

The big advantage of ordering our made-to-order proteins in comparison to ordering custom made proteins from other companies is that there is no financial obligation in case the protein cannot be expressed or purified.

Purity:	> 90 % as determined by Bis-Tris PAGE, anti-tag ELISA, Western Blot and analytical SEC (HPLC)
Grade:	custom-made

Target Details

Target:	CD38
Abstract:	CD38 Products
Background:	ADP-ribosyl cyclase/cyclic ADP-ribose hydrolase 1 (EC 3.2.2.-) (EC 3.2.2.6) (2'-phospho-ADP-ribosyl cyclase) (2'-phospho-ADP-ribosyl cyclase/2'-phospho-cyclic-ADP-ribose transferase) (EC 2.4.99.20) (2'-phospho-cyclic-ADP-ribose transferase) (ADP-ribosyl cyclase 1) (ADPRC 1) (Cyclic ADP-ribose hydrolase 1) (cADPR hydrolase 1) (T10) (CD antigen CD38),FUNCTION: Synthesizes cyclic ADP-ribose (cADPR), a second messenger for glucose-induced insulin secretion (PubMed:8253715, PubMed:7961800). Synthesizes the Ca(2+) mobilizer nicotinate-adenine dinucleotide phosphate, NAADP(+), from 2'-phospho-cADPR and nicotinic acid, as well as from NADP(+) and nicotinic acid. At both pH 5.0 and pH 7.4 preferentially transforms 2'-phospho-cADPR into NAADP(+), while preferentially cleaving NADP(+) to cADPR and ADPRP rather than into NADDP(+) (PubMed:16690024). Has cADPR hydrolase activity (PubMed:8253715, PubMed:7961800). {ECO:0000269 PubMed:16690024, ECO:0000269 PubMed:7961800, ECO:0000269 PubMed:8253715}.
Molecular Weight:	34.3 kDa
UniProt:	P28907

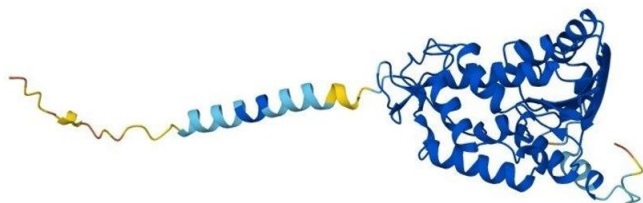
Application Details

Application Notes:	We expect the protein to work for functional studies. As the protein has not been tested for functional studies yet we cannot offer a guarantee though.
Restrictions:	For Research Use only

Handling

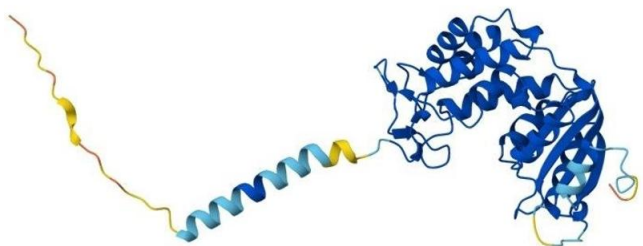
Format:	Liquid
Buffer:	The buffer composition is at the discretion of the manufacturer.
Handling Advice:	Avoid repeated freeze-thaw cycles.
Storage:	-80 °C
Storage Comment:	Store at -80°C.
Expiry Date:	12 months

Images



Protein Structure

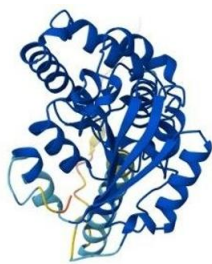
Image 1. AlphaFold protein structure prediction of Human Recombinant CD38 Protein, UniprotID P28907



Protein Structure

Image 2. AlphaFold protein structure prediction of Human Recombinant CD38 Protein, UniprotID P28907





Protein Structure

Image 3. AlphaFold protein structure prediction of Human Recombinant CD38 Protein, UniprotID P28907

