

Datasheet for ABIN7553465

## CHMP1B Protein (AA 1-199) (His tag)



[Go to Product page](#)

### 3 Images

#### Overview

Quantity:	1 mg
Target:	CHMP1B
Protein Characteristics:	AA 1-199
Origin:	Human
Source:	HEK-293 Cells
Protein Type:	Recombinant
Purification tag / Conjugate:	This CHMP1B protein is labelled with His tag.

#### Product Details

Purpose:	Custom-made recombinant CHMP1B Protein expressed in mammalian cells.
Sequence:	<p>MSNMEKHLFN LKFAAKELSR SAKKCDKEEK AEKAKIKKAI QKGNMEVARI HAENAIQKN</p> <p>QAVNFLRMSA RVDAAARVQ TAVTMGKGTK SMAGVVKSMG ATLKTMNLEK ISALMDKFEH</p> <p>QFETLDVQTT QMEDTMSSTT TLTPQNQVD MLLQEMADEA GLDLNMELPQ GQTGSGVTSV</p> <p>ASAEQDELSQ RLARLRDQV <b>Sequence without tag. The proposed Purification-Tag is based on experiences with the expression system, a different complexity of the protein could make another tag necessary. In case you have a special request, please contact us.</b></p>
Specificity:	If you are looking for a specific domain and are interested in a partial protein or a different isoform, please contact us regarding an individual offer.
Characteristics:	<p>Key Benefits:</p> <ul style="list-style-type: none"> <li>• Made to order protein - from design to production - by highly experienced protein experts.</li> <li>• Protein expressed in mammalian cells and purified in one-step affinity chromatography</li> <li>• The optimized expression system ensures reliability for intracellular, secreted and</li> </ul>

transmembrane proteins.

- State-of-the-art algorithm used for plasmid design (Gene synthesis).

This protein is a made-to-order protein and will be made for the first time for your order. Our experts in the lab try to ensure that you receive soluble protein.

If you are not interested in a full length protein, please contact us for individual protein fragments.

The big advantage of ordering our made-to-order proteins in comparison to ordering custom made proteins from other companies is that there is no financial obligation in case the protein cannot be expressed or purified.

---

Purity:	> 90 % as determined by Bis-Tris PAGE, anti-tag ELISA, Western Blot and analytical SEC (HPLC)
---------	---

---

Grade:	custom-made
--------	-------------

## Target Details

---

Target:	CHMP1B
---------	--------

---

Alternative Name:	CHMP1B ( <a href="#">CHMP1B Products</a> )
-------------------	--

---

Background:	<p>Charged multivesicular body protein 1b (CHMP1.5) (Chromatin-modifying protein 1b) (CHMP1b) (Vacuolar protein sorting-associated protein 46-2) (Vps46-2) (hVps46-2),FUNCTION: Probable peripherally associated component of the endosomal sorting required for transport complex III (ESCRT-III) which is involved in multivesicular bodies (MVBs) formation and sorting of endosomal cargo proteins into MVBs. MVBs contain intraluminal vesicles (ILVs) that are generated by invagination and scission from the limiting membrane of the endosome and mostly are delivered to lysosomes enabling degradation of membrane proteins, such as stimulated growth factor receptors, lysosomal enzymes and lipids. The MVB pathway appears to require the sequential function of ESCRT-O, -I,-II and -III complexes. ESCRT-III proteins mostly dissociate from the invaginating membrane before the ILV is released. The ESCRT machinery also functions in topologically equivalent membrane fission events, such as the terminal stages of cytokinesis and the budding of enveloped viruses (HIV-1 and other lentiviruses). ESCRT-III proteins are believed to mediate the necessary vesicle extrusion and/or membrane fission activities, possibly in conjunction with the AAA ATPase VPS4. Involved in cytokinesis. Involved in recruiting VPS4A and/or VPS4B and SPAST to the midbody of dividing cells. Involved in HIV-1 p6- and p9-dependent virus release. {ECO:0000269 PubMed:14519844, ECO:0000269 PubMed:19129479}.</p>
-------------	---

---

## Target Details

Molecular Weight:	22.1 kDa
UniProt:	<a href="#">Q7LBR1</a>

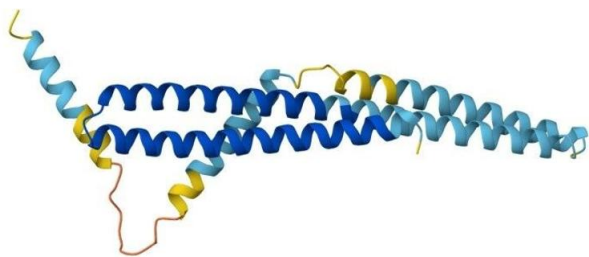
## Application Details

Application Notes:	We expect the protein to work for functional studies. As the protein has not been tested for functional studies yet we cannot offer a guarantee though.
Restrictions:	For Research Use only

## Handling

Format:	Liquid
Buffer:	The buffer composition is at the discretion of the manufacturer.
Handling Advice:	Avoid repeated freeze-thaw cycles.
Storage:	-80 °C
Storage Comment:	Store at -80°C.
Expiry Date:	12 months

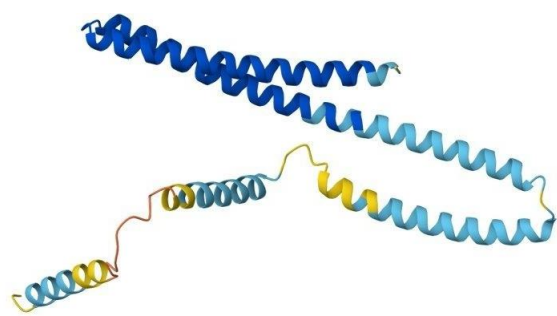
## Images



### Protein Structure

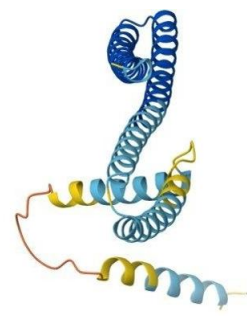
**Image 1.** AlphaFold protein structure prediction of Human Recombinant CHMP1B Protein, UniprotID Q7LBR1





Protein Structure

**Image 2.** AlphaFold protein structure prediction of Human Recombinant CHMP1B Protein, UniprotID Q7LBR1



Protein Structure

**Image 3.** AlphaFold protein structure prediction of Human Recombinant CHMP1B Protein, UniprotID Q7LBR1