

Datasheet for ABIN7553951

## PSMA Protein (AA 1-750) (His tag)

3 Images



[Go to Product page](#)

### Overview

Quantity:	1 mg
Target:	PSMA (FOLH1)
Protein Characteristics:	AA 1-750
Origin:	Human
Source:	HEK-293 Cells
Protein Type:	Recombinant
Purification tag / Conjugate:	This PSMA protein is labelled with His tag.

### Product Details

Purpose:	Custom-made recombinant FOLH1 Protein expressed in mammalian cells.
Sequence:	<p>MWNLLHETDS AVATARRPRW LCAGALVLAG GFFLLGFLFG WFIKSSNEAT NITPKHNMKA</p> <p>FLDELKAENI KKFLYNFTQI PHLAGTEQNF QLAKQIQSQW KEFGLDSVEL AHYDVLLSYP</p> <p>NKTHPNYISI INEDGNEIFN TSLFEPPPPG YENVSDIVPP FSAFSPQGMP EGDLYVYNIA</p> <p>RTEDFFKLER DMKINCSGKI VIARYGKVFR GNKVNAQLA GAKGVILYSD PADYFAPGVK</p> <p>SYPDGWNLPG GGVQRGNILN LNGAGDPLTP GYPANEYAYR RGIAEAVGLP SIPVHPIGYY</p> <p>DAQKLEKMG GSAPPDSSWR GSLKVPYNVG PGFTGNFSTQ KVKMHIHSTN EVTRIYNVIG</p> <p>TLRGAVEPDR YVILGGHRDS WVFGGIDPQS GAAVVHEIVR SFGTLKKEGW RPRRTILFAS</p> <p>WDAEEFGLLG STEWAEENSR LLQERGVAYI NADSSIEGNY TLRVDCTPLM YSLVHNLTK</p> <p>LKSPDEGFEG KSLYESWTKK SPSPEFSGMP RISKLGSGND FEVFFQRLGI ASGRARYTKN</p> <p>WETNKFSGYP LYHSVYETYE LVEKFYDPMF KYHLTVAQVR GGMVFELANS IVLPFDCRDY</p> <p>AVVLRKYADK IYSISMKHPQ EMKTYSVSFD SLFSAVKNFT EIASKFSERL QDFDKSNPIV</p> <p>LRMMNDQLMF LERAFIDPLG LPDRPFYRHV IYAPSSHNKY AGESFPGIYD ALFDIESKVD</p>

## Product Details

PSKAWGEVKR QIYVAFTVQ AAAETLSEVA **Sequence without tag. The proposed Purification-Tag is based on experiences with the expression system, a different complexity of the protein could make another tag necessary. In case you have a special request, please contact us.**

**Specificity:** If you are looking for a specific domain and are interested in a partial protein or a different isoform, please contact us regarding an individual offer.

**Characteristics:** **Key Benefits:**

- Made to order protein - from design to production - by highly experienced protein experts.
- Protein expressed in mammalian cells and purified in one-step affinity chromatography
- The optimized expression system ensures reliability for intracellular, secreted and transmembrane proteins.
- State-of-the-art algorithm used for plasmid design (Gene synthesis).

This protein is a made-to-order protein and will be made for the first time for your order. Our experts in the lab try to ensure that you receive soluble protein.

If you are not interested in a full length protein, please contact us for individual protein fragments.

The big advantage of ordering our made-to-order proteins in comparison to ordering custom made proteins from other companies is that there is no financial obligation in case the protein cannot be expressed or purified.

**Purity:** > 90 % as determined by Bis-Tris PAGE, anti-tag ELISA, Western Blot and analytical SEC (HPLC)

**Grade:** custom-made

## Target Details

**Target:** PSMA (FOLH1)

**Alternative Name:** FOLH1 ([FOLH1 Products](#))

**Background:** Glutamate carboxypeptidase 2 (EC 3.4.17.21) (Cell growth-inhibiting gene 27 protein) (Folate hydrolase 1) (Folylpoly-gamma-glutamate carboxypeptidase) (FGCP) (Glutamate carboxypeptidase II) (GCPII) (Membrane glutamate carboxypeptidase) (mGCP) (N-acetylated-alpha-linked acidic dipeptidase I) (NAALADase I) (Prostate-specific membrane antigen) (PSM) (PSMA) (Pteroylpoly-gamma-glutamate carboxypeptidase), **FUNCTION:** Has both folate hydrolase and N-acetylated-alpha-linked-acidic dipeptidase (NAALADase) activity. Has a preference for tri-alpha-glutamate peptides. In the intestine, required for the uptake of folate. In

## Target Details

the brain, modulates excitatory neurotransmission through the hydrolysis of the neuropeptide, N-aceylaspartylglutamate (NAAG), thereby releasing glutamate. Involved in prostate tumor progression., FUNCTION: Also exhibits a dipeptidyl-peptidase IV type activity. In vitro, cleaves Gly-Pro-AMC.

Molecular Weight: 84.3 kDa

UniProt: [Q04609](#)

## Application Details

Application Notes: We expect the protein to work for functional studies. As the protein has not been tested for functional studies yet we cannot offer a guarantee though.

Restrictions: For Research Use only

## Handling

Format: Liquid

Buffer: The buffer composition is at the discretion of the manufacturer.

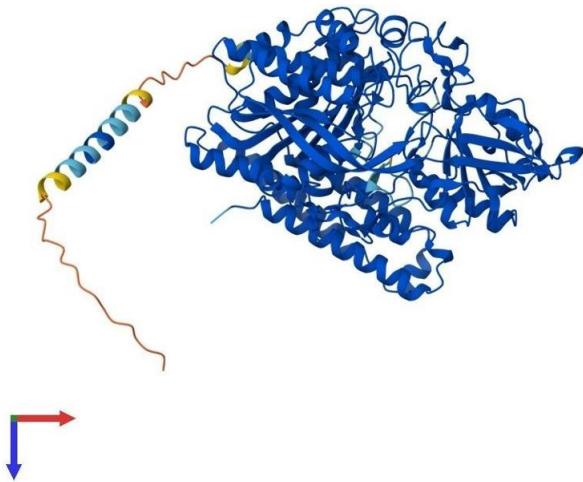
Handling Advice: Avoid repeated freeze-thaw cycles.

Storage: -80 °C

Storage Comment: Store at -80°C.

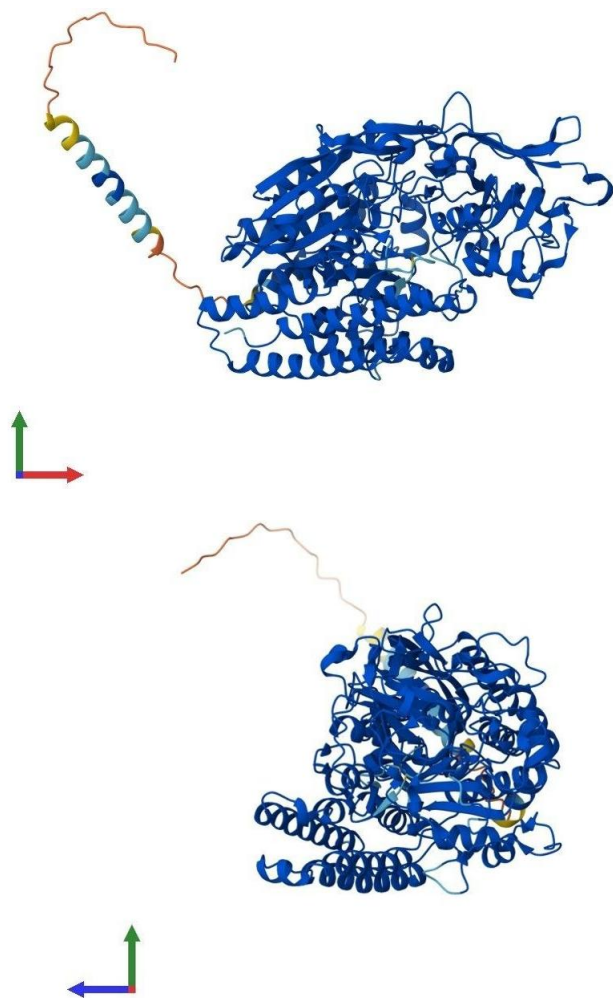
Expiry Date: 12 months

## Images



### Protein Structure

**Image 1.** AlphaFold protein structure prediction of Human Recombinant FOLH1 Protein, UniprotID Q04609



#### Protein Structure

**Image 2.** AlphaFold protein structure prediction of Human Recombinant FOLH1 Protein, UniprotID Q04609

#### Protein Structure

**Image 3.** AlphaFold protein structure prediction of Human Recombinant FOLH1 Protein, UniprotID Q04609