

Datasheet for ABIN755407
anti-LZTFL1 antibody (AA 101-200)

3 Images

[Go to Product page](#)

Overview

Quantity:	100 µL
Target:	LZTFL1
Binding Specificity:	AA 101-200
Reactivity:	Mouse, Rat
Host:	Rabbit
Clonality:	Polyclonal
Conjugate:	This LZTFL1 antibody is un-conjugated
Application:	Western Blotting (WB), ELISA, Immunofluorescence (Cultured Cells) (IF (cc)), Immunofluorescence (Paraffin-embedded Sections) (IF (p)), Immunohistochemistry (Paraffin-embedded Sections) (IHC (p)), Immunohistochemistry (Frozen Sections) (IHC (fro))

Product Details

Immunogen:	KLH conjugated synthetic peptide derived from human LZTFL1
Isotype:	IgG
Cross-Reactivity:	Mouse, Rat
Predicted Reactivity:	Human,Dog,Cow,Horse,Chicken,Rabbit
Purification:	Purified by Protein A.

Target Details

Target:	LZTFL1
---------	--------

Target Details

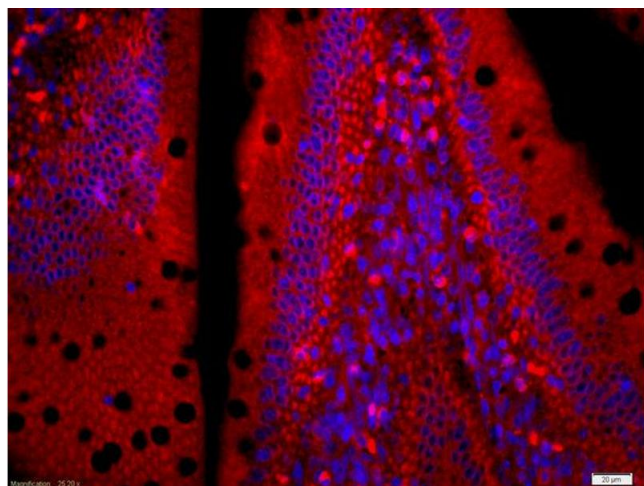
Alternative Name:	LZTFL1 (LZTFL1 Products)
Background:	Synonyms: BBS17, Leucine zipper transcription factor-like protein 1, LZTFL1 Background: Regulates ciliary localization of the BBSome complex. Together with the BBSome complex, controls SMO ciliary trafficking and contributes to the sonic hedgehog (SHH) pathway regulation. May play a role in neurite outgrowth. May have tumor suppressor function.
Gene ID:	54585
UniProt:	Q9NQ48

Application Details

Application Notes:	WB 1:300-5000 ELISA 1:500-1000 IHC-P 1:200-400 IHC-F 1:100-500 IF(IHC-P) 1:50-200 IF(IHC-F) 1:50-200 IF(ICC) 1:50-200
Restrictions:	For Research Use only

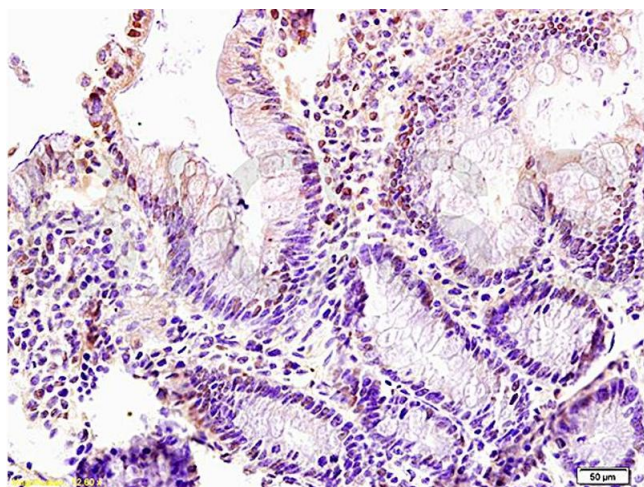
Handling

Format:	Liquid
Concentration:	1 µg/µL
Buffer:	0.01M TBS(pH 7.4) with 1 % BSA, 0.02 % Proclin300 and 50 % Glycerol.
Preservative:	ProClin
Precaution of Use:	This product contains ProClin: a POISONOUS AND HAZARDOUS SUBSTANCE, which should be handled by trained staff only.
Storage:	4 °C,-20 °C
Storage Comment:	Shipped at 4°C. Store at -20°C for one year. Avoid repeated freeze/thaw cycles.
Expiry Date:	12 months



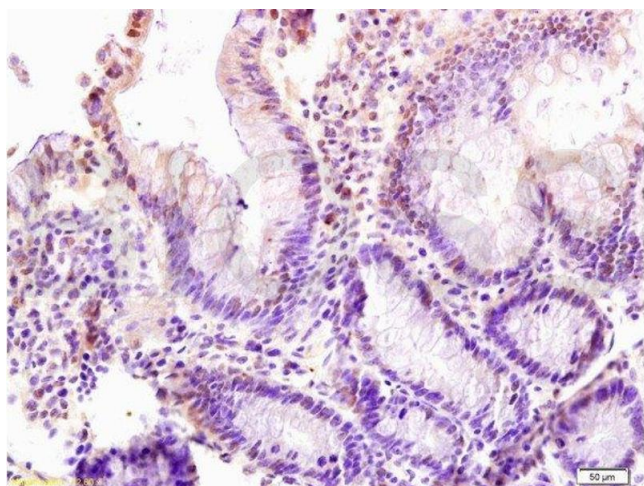
Immunofluorescence

Image 1. Formalin-fixed and paraffin embedded mouse intestine labeled with Anti-LZTFL1 Polyclonal Antibody, Unconjugated (ABIN755407) at 1:200 followed by conjugation to the secondary antibody Goat Anti-Rabbit IgG, AF555 conjugated used at 1:200 dilution for 40 minutes at 37°C and DAPI staining



Immunohistochemistry

Image 2. Formalin-fixed and paraffin: rat intestine tissue labeled with Anti-LZTFL1 Polyclonal Antibody (ABIN755407), Unconjugated at at 1:200 followed by conjugation to the secondary antibody and DAB staining



Immunohistochemistry (Paraffin-embedded Sections)

Image 3. Formalin-fixed and paraffin: rat intestine tissue labeled with Anti-LZTFL1 Polyclonal Antibody , Unconjugated at at 1:200 followed by conjugation to the secondary antibody and DAB staining