

Datasheet for ABIN7554157  
**IL16 Protein (AA 1-1332) (His tag)**



[Go to Product page](#)

3 Images

## Overview

Quantity:	1 mg
Target:	IL16
Protein Characteristics:	AA 1-1332
Origin:	Human
Source:	HEK-293 Cells
Protein Type:	Recombinant
Purification tag / Conjugate:	This IL16 protein is labelled with His tag.

## Product Details

Purpose:	Custom-made recombinant IL16 Protein expressed in mammalian cells.
Sequence:	<p>MESHSRAGKS RKSAKFRSIS RSLMLCNAKT SDDGSSPDEK YPDPFEISLA QGKEGIFHSS</p> <p>VQLADTSEAG PSSVPDLALA SEAAQLQAAG NDRGKTCRRI FFMKESSTAS SREKPGKLEA</p> <p>QSSNFLPKA CHQRARSNST SVNPYCTREI DFPMTKKSAA PTDRQPYS LC SNRKSLSQQL</p> <p>DCPAGKAAGT SRPTRSLSTA QLVQPSGGLQ ASVISNIVLM KGQAKGLGFS IVGGKDSIYG</p> <p>PIGIYVKTIF AGGAAAADGR LQEGDEILEL NGESMAGLTH QDALQKFKQA KKGLLT LTVR</p> <p>TRLTAPPSLC SHLSPPLCRS LSSSTCITKD SSSFALES PS APISTAKPNY RIMVEVSLQK</p> <p>EAGVGLGIGL CSVPYFQCIS GIFVHTLSPG SVAHLDGRLR CGDEIVEISD SPVHCLTLNE</p> <p>VYTI LSHCDP GPVPIIVSRH PDPQVSEQL KEAVAQAVEN TKFGKERHQW SLEGVKRLES</p> <p>SWHGRPTLEK EREKNSAPPH RRAQKVMIRS SSDSSYMSG S PGGSPGSGSA EKPSDDVDIS</p> <p>THSPSLPLAR EPVVL SIASS RLPQESPLP ESRDSHPPLR LKKSFEILVR KPMSSKPKPP</p> <p>PRKYFKSDSD PQKSLEEREN SSCSSGHTPP TCGQEARELL PLLLPQEDTA GRSPSASAGC</p> <p>PGPGIGPQTK SSTE GEPGWR RASPV TQTSP IKHPLLKRQA RMDYSFDTTA EDPWVRISDC</p>

IKNLFSPIMS ENHGHMPLQP NASLNEEEGT QGHPDGTTPK LDTANGTPKV YKSADSSTVK  
KGPPVAPKPA WFRQSLKGLR NRASDPRGLP DPALSTQPAP ASREHLGSHI RASSSSSSIR  
QRISSFETFG SSQLPDKGAQ RLSLQPSSGE AAKPLGKHEE GRFSGLLGRG AAPTLVPQQP  
EQVLSSGSPA ASEARDPGVS ESPPPGRQPN QKTLPPGDP LLRLLSTQAE ESQGPVLKMP  
SQRARSFPLT RSQSCETKLL DEKTSKLYSI SSQVSSAVMK SLLCLPSSIS CAQTPCIPKE  
GASPTSSSNE DSAANGSAET SALDTGFSLN LSELREYTEG LTEAKEDDDG DHSSLQSGQS  
VISLLSSEEL KKLIEEVKVL DEATLKQLDG IHVTILHKEE GAGLGFSLAG GADLENKVIT  
VHRVFPNGLA SQEGTIQGN EVLSINGKSL KGTTHHDALA ILRQAREPRQ AVIVTRKLTP  
EAMPDLNSST DSAASASAAS DVSVESTAEA TVCTVTLEKM SAGLGFSLEG GKGSLHGDGP  
LTINRIFKGA ASEQSETVQP GDEILQLGGT AMQGLTRFEA WNIKALPDG PVTIVIRRKS  
LQSKETTAAG DS **Sequence without tag. The proposed Purification-Tag is based on experiences with the expression system, a different complexity of the protein could make another tag necessary. In case you have a special request, please contact us.**

Specificity:	If you are looking for a specific domain and are interested in a partial protein or a different isoform, please contact us regarding an individual offer.
Characteristics:	<p>Key Benefits:</p> <ul style="list-style-type: none"><li>• Made to order protein - from design to production - by highly experienced protein experts.</li><li>• Protein expressed in mammalian cells and purified in one-step affinity chromatography</li><li>• The optimized expression system ensures reliability for intracellular, secreted and transmembrane proteins.</li><li>• State-of-the-art algorithm used for plasmid design (Gene synthesis).</li></ul> <p>This protein is a made-to-order protein and will be made for the first time for your order. Our experts in the lab try to ensure that you receive soluble protein.</p> <p>If you are not interested in a full length protein, please contact us for individual protein fragments.</p> <p>The big advantage of ordering our made-to-order proteins in comparison to ordering custom made proteins from other companies is that there is no financial obligation in case the protein cannot be expressed or purified.</p>
Purity:	> 90 % as determined by Bis-Tris PAGE, anti-tag ELISA, Western Blot and analytical SEC (HPLC)
Grade:	custom-made

## Target Details

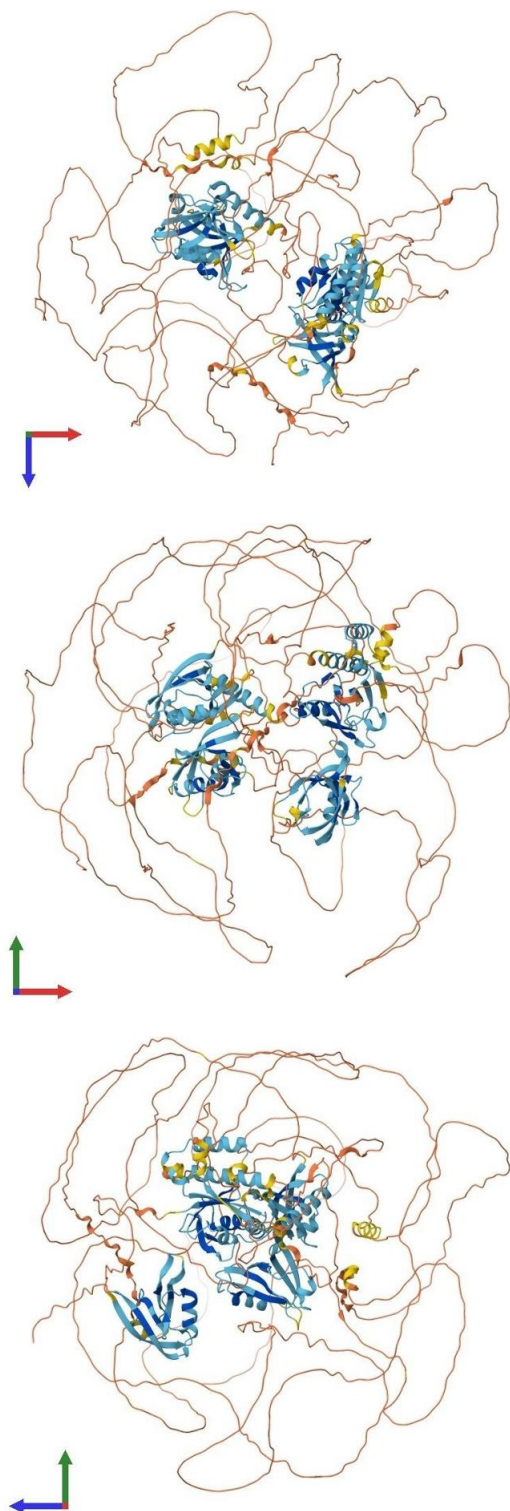
Target:	IL16
Alternative Name:	IL16 ( <a href="#">IL16 Products</a> )
Background:	<p>Pro-interleukin-16 [Cleaved into: Interleukin-16 (IL-16) (Lymphocyte chemoattractant factor) (LCF)],FUNCTION: Interleukin-16 stimulates a migratory response in CD4+ lymphocytes, monocytes, and eosinophils. Primes CD4+ T-cells for IL-2 and IL-15 responsiveness. Also induces T-lymphocyte expression of interleukin 2 receptor. Ligand for CD4., FUNCTION: [Isoform 1]: May act as a scaffolding protein that anchors ion channels in the membrane., FUNCTION: Isoform 3 is involved in cell cycle progression in T-cells. Appears to be involved in transcriptional regulation of SKP2 and is probably part of a transcriptional repression complex on the core promoter of the SKP2 gene. May act as a scaffold for GABPB1 (the DNA-binding subunit the GABP transcription factor complex) and HDAC3 thus maintaining transcriptional repression and blocking cell cycle progression in resting T-cells.</p>
Molecular Weight:	141.8 kDa
UniProt:	<a href="#">Q14005</a>

## Application Details

Application Notes:	We expect the protein to work for functional studies. As the protein has not been tested for functional studies yet we cannot offer a guarantee though.
Restrictions:	For Research Use only

## Handling

Format:	Liquid
Buffer:	The buffer composition is at the discretion of the manufacturer.
Handling Advice:	Avoid repeated freeze-thaw cycles.
Storage:	-80 °C
Storage Comment:	Store at -80°C.
Expiry Date:	12 months



#### Protein Structure

**Image 1.** AlphaFold protein structure prediction of Human Recombinant IL16 Protein, UniprotID Q14005

#### Protein Structure

**Image 2.** AlphaFold protein structure prediction of Human Recombinant IL16 Protein, UniprotID Q14005

#### Protein Structure

**Image 3.** AlphaFold protein structure prediction of Human Recombinant IL16 Protein, UniprotID Q14005