

Datasheet for ABIN7554391

KLF10/TIEG1 Protein (AA 1-480) (His tag)



[Go to Product page](#)

3 Images

Overview

Quantity:	1 mg
Target:	KLF10/TIEG1 (KLF10)
Protein Characteristics:	AA 1-480
Origin:	Human
Source:	HEK-293 Cells
Protein Type:	Recombinant
Purification tag / Conjugate:	This KLF10/TIEG1 protein is labelled with His tag.

Product Details

Purpose:	Custom-made recombinant KLF10 Protein expressed in mammalian cells.
Sequence:	<p>MLNFGASLQQ TAEERMEMIS ERPKESMYSW NKTAEKSDFE AVEALMSMSC SWKSDFKKYV ENRPVTPVSD LSEEENLLPG TPDFHTIPAF CLTPPYSPSD FEPSQVSNLM APAPSTVHFK SLSDTAKPHI AAPFKEEEKS PVSAPKLPKA QATSVIRHTA DAQLCNHQTC PMKAASILNY QNNSFRRRTH LNVEAARKNI PCAAVSPNRS KCERNTVADV DEKASAALYD FSVPSSETVI CRSQPAPVSP QQKSVLVSP AVSAGGVPPM PVICQMVPLP ANNPVTTVV PSTPPSQPPA VCPPVVFMTG QVPKGAVMFV VPQPVVQSSK PPVSPNGTR LSPIAPAPGF SPSAAKVTPQ IDSSRIRSHI CSHPGCGKTY FKSSHLKAHT RTHTGEKPFCSWKGCCERRF ARSDELSRHR RTHTGEKKFA CPMCDRRFMR SDHLTKHARR HLSAKKLPNW QMEVSKLNDI ALPPTPAPTQ</p> <p>Sequence without tag. The proposed Purification-Tag is based on experiences with the expression system, a different complexity of the protein could make another tag necessary. In case you have a special request, please contact us.</p>
Specificity:	If you are looking for a specific domain and are interested in a partial protein or a different

Product Details

isoform, please contact us regarding an individual offer.

Characteristics:

Key Benefits:

- Made to order protein - from design to production - by highly experienced protein experts.
- Protein expressed in mammalian cells and purified in one-step affinity chromatography
- The optimized expression system ensures reliability for intracellular, secreted and transmembrane proteins.
- State-of-the-art algorithm used for plasmid design (Gene synthesis).

This protein is a made-to-order protein and will be made for the first time for your order. Our experts in the lab try to ensure that you receive soluble protein.

If you are not interested in a full length protein, please contact us for individual protein fragments.

The big advantage of ordering our made-to-order proteins in comparison to ordering custom made proteins from other companies is that there is no financial obligation in case the protein cannot be expressed or purified.

Purity:

> 90 % as determined by Bis-Tris PAGE, anti-tag ELISA, Western Blot and analytical SEC (HPLC)

Grade:

custom-made

Target Details

Target:

KLF10/TIEG1 (KLF10)

Alternative Name:

KLF10 ([KLF10 Products](#))

Background:

Krueppel-like factor 10 (EGR-alpha) (Transforming growth factor-beta-inducible early growth response protein 1) (TGFB-inducible early growth response protein 1) (TIEG-1),FUNCTION: Transcriptional repressor which binds to the consensus sequence 5'-GGTGTG-3'. Plays a role in the regulation of the circadian clock, binds to the GC box sequence in the promoter of the core clock component ARTNL/BMAL1 and represses its transcriptional activity. Regulates the circadian expression of genes involved in lipogenesis, gluconeogenesis, and glycolysis in the liver. Represses the expression of PCK2, a rate-limiting step enzyme of gluconeogenesis (By similarity). May play a role in the cell cycle regulation. {ECO:0000250|UniProtKB:O89091, ECO:0000269|PubMed:8584037}.

Molecular Weight:

52.6 kDa

UniProt:

[Q13118](#)

Target Details

Pathways: [Stem Cell Maintenance](#)

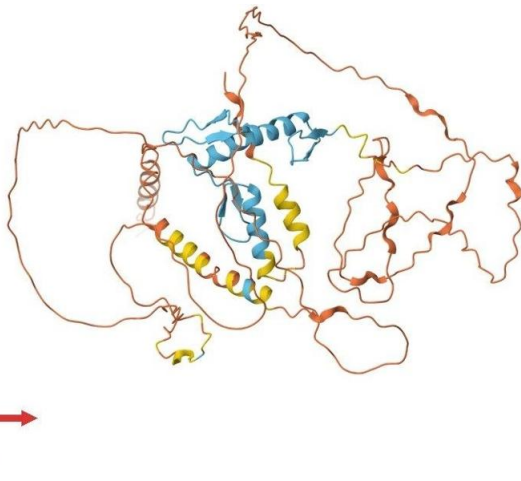
Application Details

Application Notes:	We expect the protein to work for functional studies. As the protein has not been tested for functional studies yet we cannot offer a guarantee though.
Restrictions:	For Research Use only

Handling

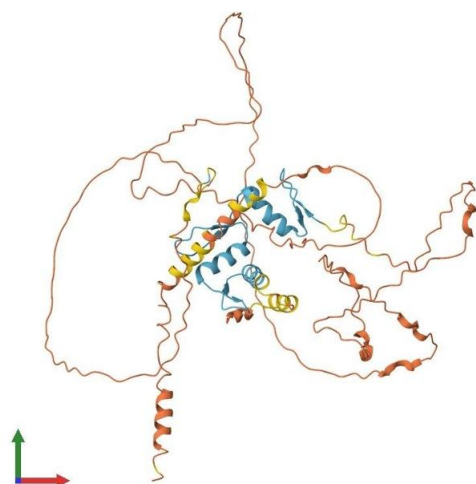
Format:	Liquid
Buffer:	The buffer composition is at the discretion of the manufacturer.
Handling Advice:	Avoid repeated freeze-thaw cycles.
Storage:	-80 °C
Storage Comment:	Store at -80°C.
Expiry Date:	12 months

Images



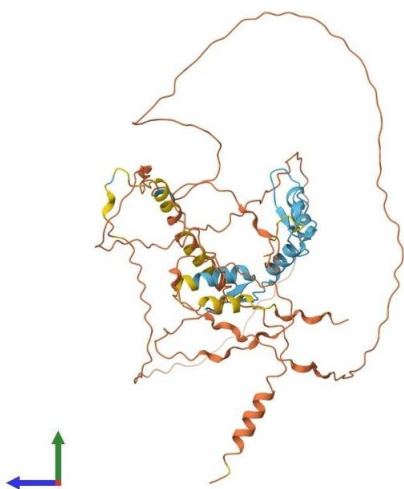
Protein Structure

Image 1. AlphaFold protein structure prediction of Human Recombinant KLF10 Protein, UniprotID Q13118



Protein Structure

Image 2. AlphaFold protein structure prediction of Human Recombinant KLF10 Protein, UniprotID Q13118



Protein Structure

Image 3. AlphaFold protein structure prediction of Human Recombinant KLF10 Protein, UniprotID Q13118