

Datasheet for ABIN755482

anti-DP1 antibody

2 Images

[Go to Product page](#)

Overview

Quantity:	100 µg
Target:	DP1 (TFDP1)
Reactivity:	Human, Mouse, Rat, Cow, Horse, Dog, Chicken
Host:	Rabbit
Clonality:	Polyclonal
Conjugate:	This DP1 antibody is un-conjugated
Application:	Western Blotting (WB), Immunohistochemistry (Paraffin-embedded Sections) (IHC (p)), Immunofluorescence (Paraffin-embedded Sections) (IF (p))

Product Details

Immunogen:	Polyclonal antibodies are produced by immunizing animals with synthetic peptide derived from human TFDP1 Please inquire for sequence information.
Isotype:	IgG
Cross-Reactivity:	Mouse (Murine), Rat (Rattus)
Purification:	affinity purified by Protein A

Target Details

Target:	DP1 (TFDP1)
Alternative Name:	DP1/TFDP1 (TFDP1 Products)
Background:	DP family contains at least two members DP1 and 2. Structurally DP1 and 2 are relatively

Target Details

conserved yet their expression appears to be tissue specific. E2F 1 a functional target for the tumor suppressor protein Rb heterodimerizes with DP1 and forms an active E2F transcriptional complex. The interaction between members of the E2F and the DP families is mediated in part by a leucine repeat which is weakly conserved between the two families.

Synonym: DRTF1, DRTF 1, DRTF-1, TFDP1, TFDP 1, TFDP-1, Transcription factor Dp-1.

Molecular Weight: 45kDa

Gene ID: 7027

Pathways: [Cell Division Cycle](#), [Mitotic G1-G1/S Phases](#)

Application Details

Application Notes: WB(1:100-500)

Optimal working dilution should be determined by the investigator.

Restrictions: For Research Use only

Handling

Format: Liquid

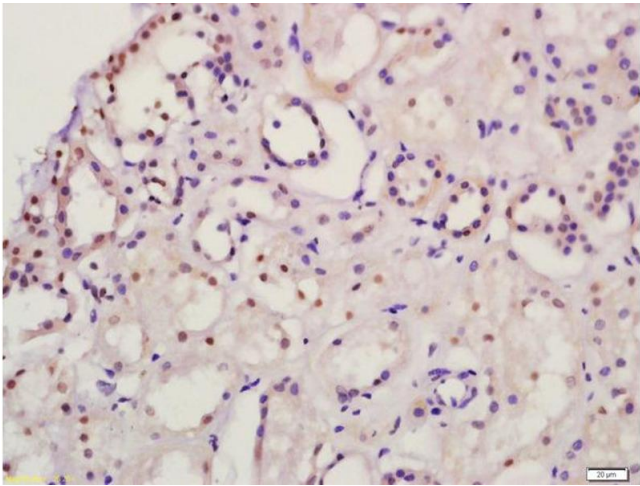
Concentration: 1mg/1ml

Buffer: 0.01M PBS, pH 7.4 with 10 mg/ml BSA

Preservative: Sodium azide

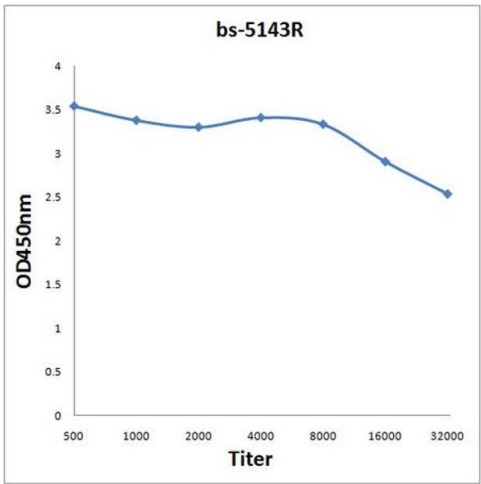
Precaution of Use: This product contains sodium azide: a POISONOUS AND HAZARDOUS SUBSTANCE which should be handled by trained staff only.

Storage: -20 °C



Immunohistochemistry

Image 1. Formalin-fixed and paraffin embedded human kidney labeled with Anti-DP1 Polyclonal Antibody, Unconjugated (ABIN682498) at 1:200 followed by conjugation to the secondary antibody and DAB staining



ELISA

Image 2. Antigen: 0.2 µg/100 µL Primary: Antiserum, 1:500, 1:1000, 1:2000, 1:4000, 1:8000, 1:16000, 1:32000; Secondary: HRP conjugated Goat Anti-Rabbit IgG at 1: 5000; TMB staining; Read the data in Microplate Reader by 450nm