

Datasheet for ABIN755557  
**anti-CDC7 antibody (AA 151-250)**[Go to Product page](#)

## 1 Image

## Overview

Quantity:	100 µL
Target:	CDC7
Binding Specificity:	AA 151-250
Reactivity:	Human, Rat
Host:	Rabbit
Clonality:	Polyclonal
Conjugate:	This CDC7 antibody is un-conjugated
Application:	ELISA, Flow Cytometry (FACS), Immunofluorescence (Cultured Cells) (IF (cc)), Immunofluorescence (Paraffin-embedded Sections) (IF (p)), Immunohistochemistry (Paraffin-embedded Sections) (IHC (p)), Immunohistochemistry (Frozen Sections) (IHC (fro))

## Product Details

Immunogen:	KLH conjugated synthetic peptide derived from human Cdc7
Isotype:	IgG
Cross-Reactivity:	Human, Rat
Predicted Reactivity:	Mouse,Dog,Cow,Pig,Horse
Purification:	Purified by Protein A.

## Target Details

Target:	CDC7
---------	------

## Target Details

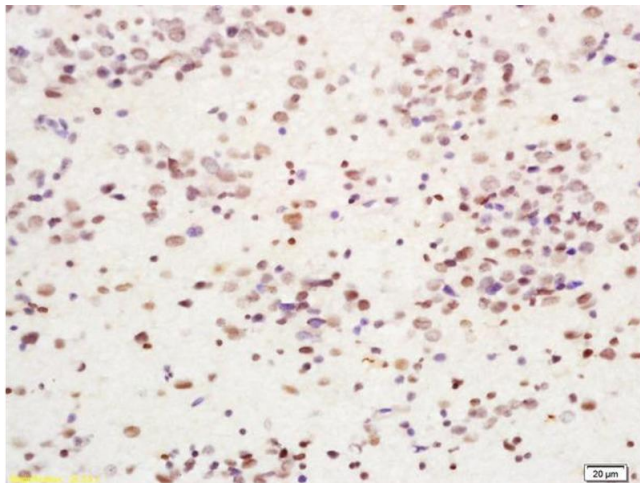
Alternative Name:	Cdc7 ( <a href="#">CDC7 Products</a> )
Background:	Synonyms: Hsk1, CDC7L1, HsCDC7, huCDC7, Cell division cycle 7-related protein kinase, CDC7-related kinase, CDC7  Background: Seems to phosphorylate critical substrates that regulate the G1/S phase transition and/or DNA replication. Can phosphorylates MCM2 and MCM3.
Gene ID:	8317
UniProt:	<a href="#">O00311</a>
Pathways:	<a href="#">Mitotic G1-G1/S Phases</a> , <a href="#">DNA Replication</a>

## Application Details

Application Notes:	ELISA 1:500-1000 FCM 1:20-100 IHC-P 1:200-400 IHC-F 1:100-500 IF(IHC-P) 1:50-200 IF(IHC-F) 1:50-200 IF(ICC) 1:50-200
Restrictions:	For Research Use only

## Handling

Format:	Liquid
Concentration:	1 µg/µL
Buffer:	0.01M TBS( pH 7.4) with 1 % BSA, 0.02 % Proclin300 and 50 % Glycerol.
Preservative:	ProClin
Precaution of Use:	This product contains ProClin: a POISONOUS AND HAZARDOUS SUBSTANCE, which should be handled by trained staff only.
Storage:	4 °C,-20 °C
Storage Comment:	Shipped at 4°C. Store at -20°C for one year. Avoid repeated freeze/thaw cycles.
Expiry Date:	12 months



#### Immunohistochemistry

**Image 1.** Formalin-fixed and paraffin embedded human glioma labeled with Anti-Cdc7 Polyclonal Antibody, Unconjugated (ABIN755557) at 1:200 followed by conjugation to the secondary antibody and DAB staining.