

Datasheet for ABIN7555784
TLE3 Protein (AA 1-772) (His tag)



[Go to Product page](#)

3 Images

Overview

Quantity:	1 mg
Target:	TLE3
Protein Characteristics:	AA 1-772
Origin:	Human
Source:	HEK-293 Cells
Protein Type:	Recombinant
Purification tag / Conjugate:	This TLE3 protein is labelled with His tag.

Product Details

Purpose:	Made-to-order recombinant TLE3 Protein expressed in mammalian cells.
Sequence:	<p> MYPQGRHPAP HQPGQPGFKF TVAESCDRIK DEFQFLQAQY HSLKVEYDKL ANEKTEMQRH YVMYYEMSYG LNIEMHKQTE IAKRLNTILA QIMPFLSQEH QQQVAQAVER AKQVTMTELN AIIGQQQLQA QHLSHATHGP PVQLPPHPSPG LQPPGIPPVT GSSSGLLAGL ALGSQAHLTV KDEKNHHELD HRERESSANN SVSPSESLRA SEKHRSADY SMEAKKRKAE EKDSLRYDS DGDKSDDLVV DVSNEPATP RVSPAHSPE NGLDKARSLK KDAPTSPASV ASSSSTPSSK TKDLGHNDKS STPGLKSNTP TPRNDAPTPG TSTTPGLRSM PGKPPGMDPI GIMASALRTP ISITSSYAAP FAMMSHHEMN GSLTSPGAYA GLHNIPPQMS AAAAAAAAAAY GRSPMVSFGA VGFDPPHPPMR ATGLPSSLAS IPGGKPAYSF HVSADGQMMP VPFPHDALAG PGIPRHARQI NTLSHGEEVVC AVTISNPTRH VYTGGKGCVK IWDISQPGSK SPISQLDCLN RDNYIRSCKL LPDGRTLIVG GEASTLIWD LASPTPRIKA ELTSSAPACY ALAISPAKV CFSCCSDGNI AVWDLHNQTL VRQFQGHTDG ASCIDISHDG TKLWTGGLDN TVRSWDLREG RQLQQHDFTS QIFSLGYCPT GEWLAVGMES SNVEVLHHTK PDKYQLHLHE SCVLSLKFAY CGKWFVSTGK </p>

Product Details

DNLLNAWRTP YGASIFQSKE SSSVLSCDIS ADDKYIVTGS GDKKATVYEV IY **Sequence without tag. The proposed Purification-Tag is based on experiences with the expression system, a different complexity of the protein could make another tag necessary. In case you have a special request, please contact us.**

Specificity: If you are looking for a specific domain and are interested in a partial protein or a different isoform, please contact us regarding an individual offer.

Characteristics: **Key Benefits:**

- Made to order protein - from design to production - by highly experienced protein experts.
- Protein expressed in mammalian cells and purified in one-step affinity chromatography
- The optimized expression system ensures reliability for intracellular, secreted and transmembrane proteins.
- State-of-the-art algorithm used for plasmid design (Gene synthesis).

This protein is a made-to-order protein and will be made for the first time for your order. Our experts in the lab try to ensure that you receive soluble protein.

If you are not interested in a full length protein, please contact us for individual protein fragments.

The big advantage of ordering our made-to-order proteins in comparison to ordering custom made proteins from other companies is that there is no financial obligation in case the protein cannot be expressed or purified.

Purity: > 90 % as determined by Bis-Tris PAGE, anti-tag ELISA, Western Blot and analytical SEC (HPLC)

Grade: custom-made

Target Details

Target: TLE3

Alternative Name: TLE3 ([TLE3 Products](#))

Background: Transducin-like enhancer protein 3 (Enhancer of split groucho-like protein 3) (ESG3),FUNCTION: Transcriptional corepressor that binds to a number of transcription factors. Inhibits the transcriptional activation mediated by CTNNB1 and TCF family members in Wnt signaling. The effects of full-length TLE family members may be modulated by association with dominant-negative AES (By similarity). {ECO:0000250}.

Molecular Weight: 83.4 kDa

Target Details

UniProt:	Q04726
Pathways:	SARS-CoV-2 Protein Interactome

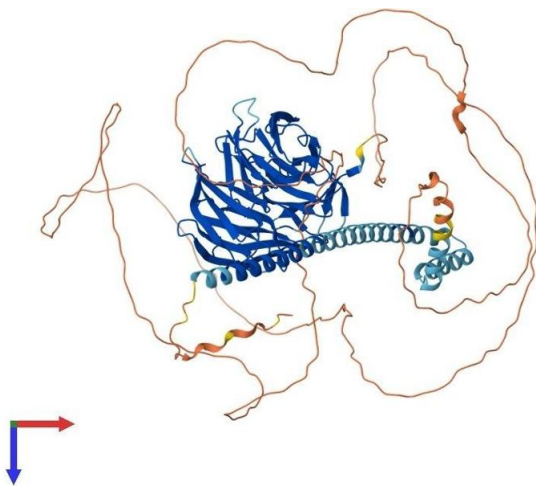
Application Details

Application Notes:	We expect the protein to work for functional studies. As the protein has not been tested for functional studies yet we cannot offer a guarantee though.
Restrictions:	For Research Use only

Handling

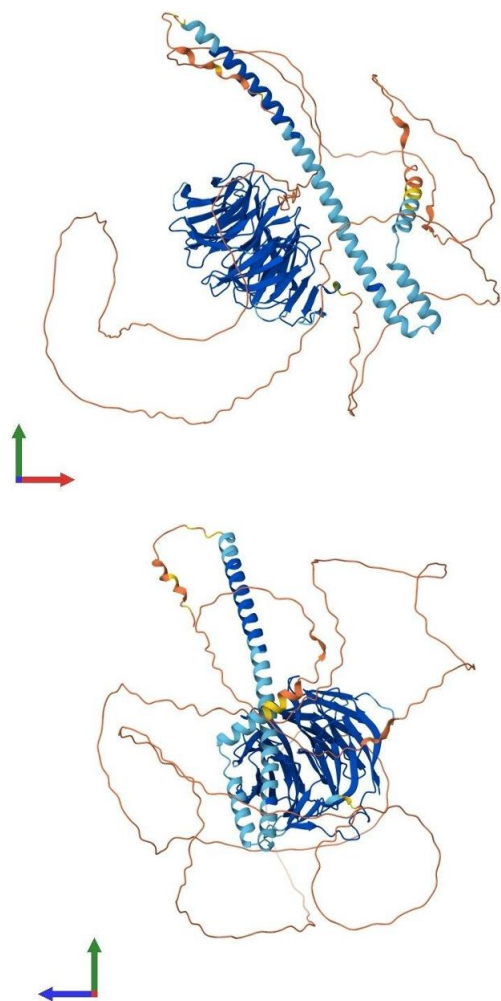
Format:	Liquid
Buffer:	The buffer composition is at the discretion of the manufacturer.
Handling Advice:	Avoid repeated freeze-thaw cycles.
Storage:	-80 °C
Storage Comment:	Store at -80°C.
Expiry Date:	12 months

Images



Protein Structure

Image 1. AlphaFold protein structure prediction of Human Recombinant TLE3 Protein, UniprotID Q04726



Protein Structure

Image 2. AlphaFold protein structure prediction of Human Recombinant TLE3 Protein, UniprotID Q04726

Protein Structure

Image 3. AlphaFold protein structure prediction of Human Recombinant TLE3 Protein, UniprotID Q04726