

Datasheet for ABIN755587
anti-Girdin antibody (AA 1401-1500)[Go to Product page](#)

2 Images

1 Publication

Overview

| | |
|----------------------|---|
| Quantity: | 100 µL |
| Target: | Girdin (CCDC88A) |
| Binding Specificity: | AA 1401-1500 |
| Reactivity: | Human |
| Host: | Rabbit |
| Clonality: | Polyclonal |
| Conjugate: | This Girdin antibody is un-conjugated |
| Application: | ELISA, Western Blotting (WB), Immunohistochemistry (Paraffin-embedded Sections) (IHC (p)), Immunofluorescence (Cultured Cells) (IF (cc)), Immunofluorescence (Paraffin-embedded Sections) (IF (p)), Immunohistochemistry (Frozen Sections) (IHC (fro)), Immunocytochemistry (ICC) |

Product Details

| | |
|-----------------------|--|
| Immunogen: | KLH conjugated synthetic peptide derived from human APE/Girdin |
| Isotype: | IgG |
| Cross-Reactivity: | Human |
| Predicted Reactivity: | Mouse,Rat,Dog,Horse,Rabbit |
| Purification: | Purified by Protein A. |

Target Details

| | |
|---------|------------------|
| Target: | Girdin (CCDC88A) |
|---------|------------------|

Target Details

| | |
|-------------------|---|
| Alternative Name: | Girdin (CCDC88A Products) |
| Background: | <p>Synonyms: APE, APX, APE1, APEN, APEX, HAP1, REF1, DNA-(apurinic or apyrimidinic site) lyase, APEX nuclease, Apurinic-apyrimidinic endonuclease 1, AP endonuclease 1, APE-1, REF-1, Redox factor-1, APEX1</p> <p>Background: Multifunctional protein that plays a central role in the cellular response to oxidative stress. The two major activities of APEX1 in DNA repair and redox regulation of transcriptional factors. Functions as a apurinic/apyrimidinic (AP) endodeoxyribonuclease in the DNA base excision repair (BER) pathway of DNA lesions induced by oxidative and alkylating agents. Initiates repair of AP sites in DNA by catalyzing hydrolytic incision of the phosphodiester backbone immediately adjacent to the damage, generating a single-strand break with 5'-deoxyribose phosphate and 3'-hydroxyl ends. Does also incise at AP sites in the DNA strand of DNA/RNA hybrids, single-stranded DNA regions of R-loop structures, and single-stranded RNA molecules. Has a 3'-5' exoribonuclease activity on mismatched deoxyribonucleotides at the 3' termini of nicked or gapped DNA molecules during short-patch BER. Possesses a DNA 3' phosphodiesterase activity capable of removing lesions (such as phosphoglycolate) blocking the 3' side of DNA strand breaks. May also play a role in the epigenetic regulation of gene expression by participating in DNA demethylation. Acts as a loading factor for POLB onto non-incised AP sites in DNA and stimulates the 5'-terminal deoxyribose 5'-phosphate (dRp) excision activity of POLB. Plays a role in the protection from granzymes-mediated cellular repair leading to cell death. Also involved in the DNA cleavage step of class switch recombination (CSR). On the other hand, APEX1 also exerts reversible nuclear redox activity to regulate DNA binding affinity and transcriptional activity of transcriptional factors by controlling the redox status of their DNA-binding domain, such as the FOS/JUN AP-1 complex after exposure to IR. Involved in calcium-dependent down-regulation of parathyroid hormone (PTH) expression by binding to negative calcium response elements (nCaREs).</p> |
| Gene ID: | 328 |
| UniProt: | P27695 |

Application Details

| | |
|--------------------|--------------------|
| Application Notes: | WB 1:300-5000 |
| | ELISA 1:500-1000 |
| | IHC-P 1:200-400 |
| | IHC-F 1:100-500 |
| | IF(IHC-P) 1:50-200 |

Application Details

IF(IHC-F) 1:50-200
IF(ICC) 1:50-200
ICC 1:100-500

Restrictions: For Research Use only

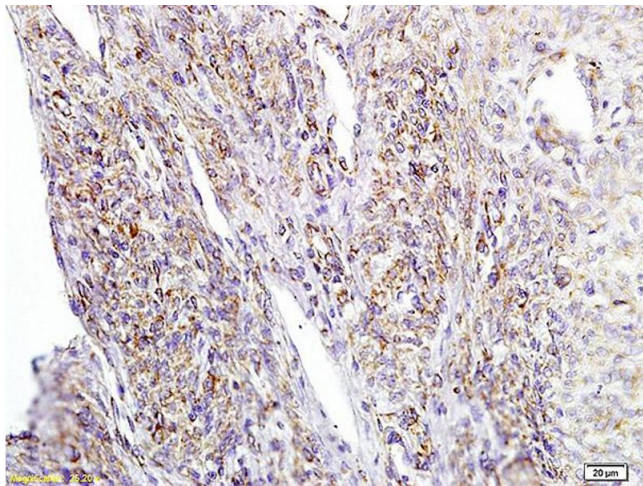
Handling

| | |
|--------------------|--|
| Format: | Liquid |
| Concentration: | 1 µg/µL |
| Buffer: | 0.01M TBS(pH 7.4) with 1 % BSA, 0.02 % Proclin300 and 50 % Glycerol. |
| Preservative: | ProClin |
| Precaution of Use: | This product contains ProClin: a POISONOUS AND HAZARDOUS SUBSTANCE, which should be handled by trained staff only. |
| Storage: | 4 °C,-20 °C |
| Storage Comment: | Shipped at 4°C. Store at -20°C for one year. Avoid repeated freeze/thaw cycles. |
| Expiry Date: | 12 months |

Publications

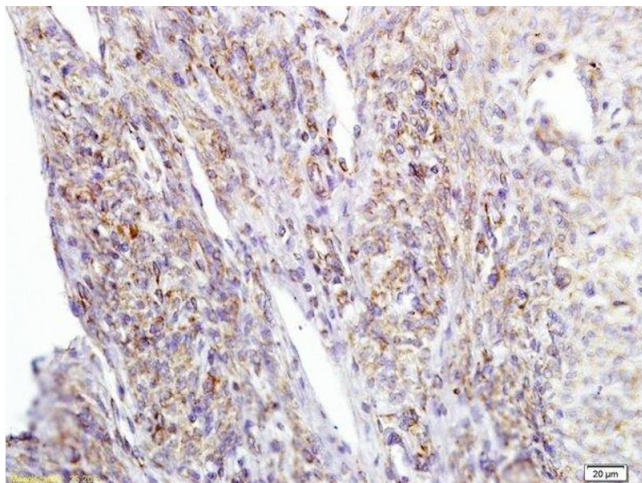
Product cited in: Ni, Fang, Tong, Tong, Yi, Qiu, Wang, Tong: "Girdin regulates the migration and invasion of glioma cells via the PI3K?Akt signaling pathway." in: **Molecular medicine reports**, (2015) ([PubMed](#)).

Images



Immunohistochemistry

Image 1. Formalin-fixed and paraffin embedded human cervical carcinoma labeled with Anti APE/Girdin Polyclonal Antibody, Unconjugated (ABIN755587) at 1:200 followed by conjugation to the secondary antibody and DAB staining



Immunohistochemistry (Paraffin-embedded Sections)

Image 2. Formalin-fixed and paraffin embedded human cervical carcinoma labeled with Anti APE/Girdin Polyclonal Antibody, Unconjugated at 1:200 followed by conjugation to the secondary antibody and DAB staining