

Datasheet for ABIN755632  
**anti-LSP1 antibody (AA 241-339)**

## 3 Images

[Go to Product page](#)

## Overview

Quantity:	100 µL
Target:	LSP1
Binding Specificity:	AA 241-339
Reactivity:	Human, Mouse
Host:	Rabbit
Clonality:	Polyclonal
Conjugate:	This LSP1 antibody is un-conjugated
Application:	Western Blotting (WB), ELISA, Immunofluorescence (Paraffin-embedded Sections) (IF (p)), Immunofluorescence (Cultured Cells) (IF (cc)), Immunohistochemistry (Paraffin-embedded Sections) (IHC (p)), Immunohistochemistry (Frozen Sections) (IHC (fro))

## Product Details

Immunogen:	KLH conjugated synthetic peptide derived from human LSP1
Isotype:	IgG
Cross-Reactivity:	Human, Mouse
Predicted Reactivity:	Rat,Dog
Purification:	Purified by Protein A.

## Target Details

Target:	LSP1
---------	------

## Target Details

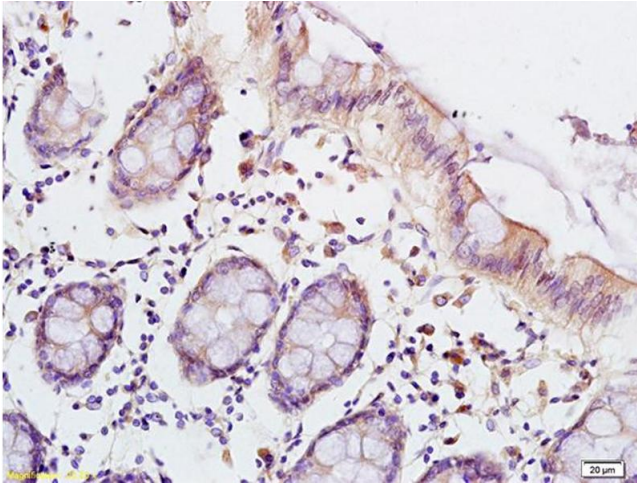
Alternative Name:	LSP1 ( <a href="#">LSP1 Products</a> )
Background:	<p>Synonyms: WP34, pp52, Lymphocyte-specific protein 1, 47 kDa actin-binding protein, 52 kDa phosphoprotein, Lymphocyte-specific antigen WP34, LSP1</p> <p>Background: May play a role in mediating neutrophil activation and chemotaxis. This gene encodes an intracellular F-actin binding protein. The protein is expressed in lymphocytes, neutrophils, macrophages, and endothelium and may regulate neutrophil motility, adhesion to fibrinogen matrix proteins, and transendothelial migration. Alternative splicing results in multiple transcript variants encoding different isoforms. [provided by RefSeq, Jul 2008]</p>
Gene ID:	4046
UniProt:	<a href="#">P33241</a>

## Application Details

Application Notes:	WB 1:300-5000 ELISA 1:500-1000 IHC-P 1:200-400 IHC-F 1:100-500 IF(IHC-P) 1:50-200 IF(IHC-F) 1:50-200 IF(ICC) 1:50-200
Restrictions:	For Research Use only

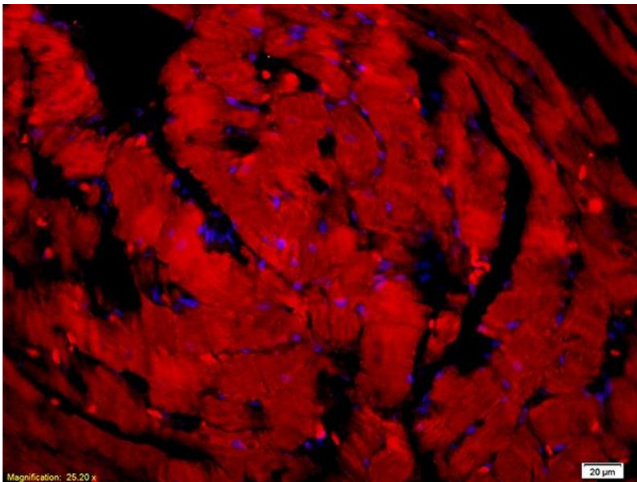
## Handling

Format:	Liquid
Concentration:	1 µg/µL
Buffer:	0.01M TBS( pH 7.4) with 1 % BSA, 0.02 % Proclin300 and 50 % Glycerol.
Preservative:	ProClin
Precaution of Use:	This product contains ProClin: a POISONOUS AND HAZARDOUS SUBSTANCE, which should be handled by trained staff only.
Storage:	4 °C,-20 °C
Storage Comment:	Shipped at 4°C. Store at -20°C for one year. Avoid repeated freeze/thaw cycles.
Expiry Date:	12 months



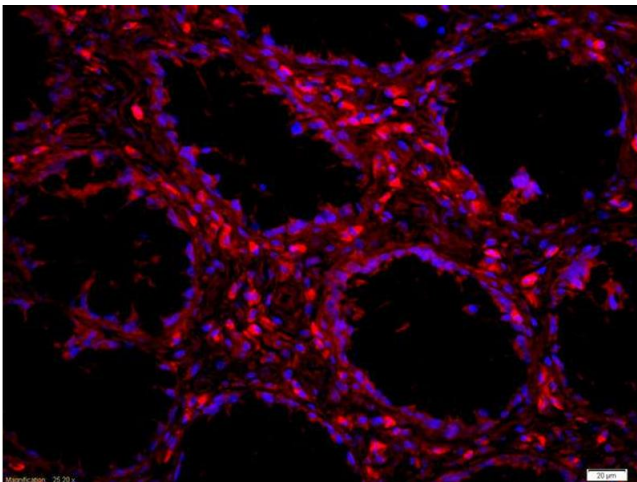
#### Immunohistochemistry

**Image 1.** Formalin-fixed and paraffin embedded human colon carcinoma labeled with Anti-LSP1 Polyclonal Antibody, Unconjugated (ABIN755632) at 1:200 followed by conjugation to the secondary antibody and DAB staining



#### Immunofluorescence

**Image 2.** Formalin-fixed and paraffin embedded mouse heart tissue labeled with Anti-LSP1 Polyclonal Antibody, unconjugated (ABIN755632) at 1: 200 followed by incubation with conjugated secondary antibody (Goat Anti-Rabbit IgG, Cy3 conjugated used at 1: 200 dilution for 40 minutes at 37°C and DAPI staining).



#### Immunofluorescence

**Image 3.** Formalin-fixed and paraffin embedded human colon carcinoma labeled with Anti-LSP1 Polyclonal Antibody, Unconjugated (ABIN755632) at 1:200 followed by conjugation to the secondary antibody Goat Anti-Rabbit IgG,PE conjugated used at 1:200 dilution for 40 minutes at 37°C and DAPI staining