

Datasheet for ABIN755707
anti-MYL1 antibody (AA 101-170)[Go to Product page](#)

1 Image

Overview

Quantity:	100 µL
Target:	MYL1
Binding Specificity:	AA 101-170
Reactivity:	Human, Rat, Mouse
Host:	Rabbit
Clonality:	Polyclonal
Conjugate:	This MYL1 antibody is un-conjugated
Application:	Western Blotting (WB), ELISA, Immunofluorescence (Cultured Cells) (IF (cc)), Immunofluorescence (Paraffin-embedded Sections) (IF (p)), Immunohistochemistry (Paraffin-embedded Sections) (IHC (p)), Immunohistochemistry (Frozen Sections) (IHC (fro))

Product Details

Immunogen:	KLH conjugated synthetic peptide derived from human MRLC2
Isotype:	IgG
Specificity:	This antibody may recognize myosin light chain 5, myosin light chain 7, or myosin regulatory light chain 10
Cross-Reactivity:	Human, Mouse, Rat
Predicted Reactivity:	Dog,Cow,Sheep,Pig,Horse,Rabbit
Purification:	Purified by Protein A.

Target Details

Target:	MYL1
Alternative Name:	Fast skeletal Myosin (MYL1 Products)
Background:	<p>Synonyms: MRLC2, MYL11, HUMMLC2B, Myosin regulatory light chain 2, skeletal muscle isoform, Fast skeletal myosin light chain 2, MLC2B, MYLPF</p> <p>Background: Myosin is a highly conserved, ubiquitously expressed protein that interacts with Actin to generate the force for cellular movements. Conventional Myosins are hexameric proteins consisting of two heavy chain subunits, a pair of non-phosphorylatable light chain subunits and a pair of phosphorylatable light chain subunits. Three general classes of Myosin have been cloned: smooth muscle Myosins, striated muscle Myosins and non-muscle Myosins . Contractile activity in smooth muscle is regulated by the calcium/calmodulin-dependent phosphorylation of Myosin light chain (MLC) by Myosin light chain kinase. Myosin heavy chains, which are encoded by the MYH gene family, contain Actin-activated ATPase activity which generates the motor function of Myosin. Myosin heavy chains were initially isolated from a human fetal skeletal muscle and are the major determinant in the speed of contraction of skeletal muscle. Various isoforms of myosin heavy chains are differentially expressed depending on the functional activity of the muscle.</p>
Gene ID:	29895
UniProt:	Q96A32

Application Details

Application Notes:	WB 1:300-5000 ELISA 1:500-1000 IHC-P 1:200-400 IHC-F 1:100-500 IF(IHC-P) 1:50-200 IF(IHC-F) 1:50-200 IF(ICC) 1:50-200
Restrictions:	For Research Use only

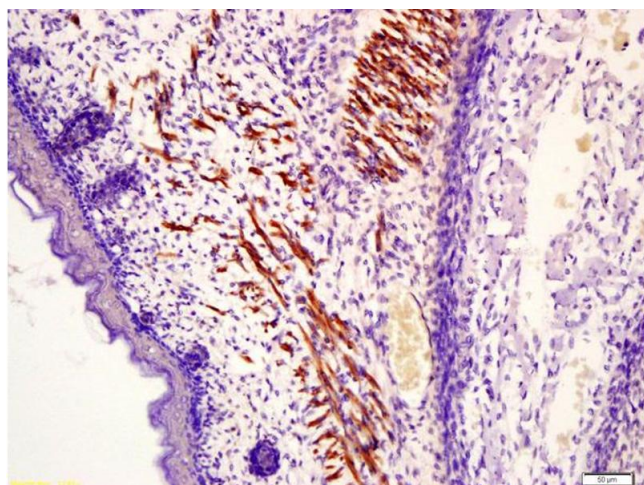
Handling

Format:	Liquid
Concentration:	1 µg/µL

Handling

Buffer:	0.01M TBS(pH 7.4) with 1 % BSA, 0.02 % Proclin300 and 50 % Glycerol.
Preservative:	ProClin
Precaution of Use:	This product contains ProClin: a POISONOUS AND HAZARDOUS SUBSTANCE, which should be handled by trained staff only.
Storage:	4 °C, -20 °C
Storage Comment:	Shipped at 4°C. Store at -20°C for one year. Avoid repeated freeze/thaw cycles.
Expiry Date:	12 months

Images



Immunohistochemistry

Image 1. Formalin-fixed and paraffin embedded mouse embryonic muscle labeled with Anti-Fast skeletal Myosin Polyclonal Antibody, Unconjugated (ABIN755707) at 1:200 followed by conjugation to the secondary antibody and DAB staining