

Datasheet for ABIN7560179

## Coronin 6 Protein (CORO6) (AA 1-471) (His tag)



[Go to Product page](#)

### 3 Images

#### Overview

Quantity:	1 mg
Target:	Coronin 6 (CORO6)
Protein Characteristics:	AA 1-471
Origin:	Mouse
Source:	HEK-293 Cells
Protein Type:	Recombinant
Purification tag / Conjugate:	This Coronin 6 protein is labelled with His tag.

#### Product Details

Purpose:	Custom-made recombinant Coro6 Protein expressed in mammalian cells.
Sequence:	<p>MSRRVVRQSK FRHVFQQAQK ADQAYEDIRV SKVTWDSAFC AVNPKFLAI VEAGGGGAFI            VLPLAKTGRV DKNYPLVTGH TGPVLDIDWC PHNDNVIASA SDDTTVMVWQ IPDYTPVRNI            TEPVITLEGH SKRVGILSWH PTARNVLLSA GGDNVIIIWN VGTGEVLLSL DDIHPDVIHS            VCWNSNGSLL ATTCKDKTLR IIDPRKSQV AERARPHEGA RPLRAVFTAD GKLLSTGFSR            MSERQLALWD PNNFEEPVAL QEMDTSNGVL LPFYDPDSSI VYLCGKGDSS IRYFEITEEP            PFVHYLNTFS SKEPQRGMGF MPKRGLDVSK CEIARFYKLH ERKCEPIIMT VPRKSDLFQD            DLYPDTPGPE PALEADEWLS GQDAEPVLIS LKEGYVPPKH RELRVTKRNI LDVRPPASPR            RSQSASEAPL SQHTLETLL EIKALRDRVQ AQEERITALE NMLCELVDGT D <b>Sequence without tag. The proposed Purification-Tag is based on experiences with the expression system, a different complexity of the protein could make another tag necessary. In case you have a special request, please contact us.</b></p>
Specificity:	If you are looking for a specific domain and are interested in a partial protein or a different

## Product Details

isoform, please contact us regarding an individual offer.

### Characteristics:

#### Key Benefits:

- Made to order protein - from design to production - by highly experienced protein experts.
- Protein expressed in mammalian cells and purified in one-step affinity chromatography
- The optimized expression system ensures reliability for intracellular, secreted and transmembrane proteins.
- State-of-the-art algorithm used for plasmid design (Gene synthesis).

This protein is a made-to-order protein and will be made for the first time for your order. Our experts in the lab try to ensure that you receive soluble protein.

If you are not interested in a full length protein, please contact us for individual protein fragments.

The big advantage of ordering our made-to-order proteins in comparison to ordering custom made proteins from other companies is that there is no financial obligation in case the protein cannot be expressed or purified.

Purity: > 90 % as determined by Bis-Tris PAGE, anti-tag ELISA, Western Blot and analytical SEC (HPLC)

Grade: custom-made

## Target Details

Target: Coronin 6 (CORO6)

Alternative Name: Coro6 ([CORO6 Products](#))

Background: Coronin-6 (Coronin-like protein E) (Clipin-E)

Molecular Weight: 52.6 kDa

UniProt: [Q920M5](#)

## Application Details

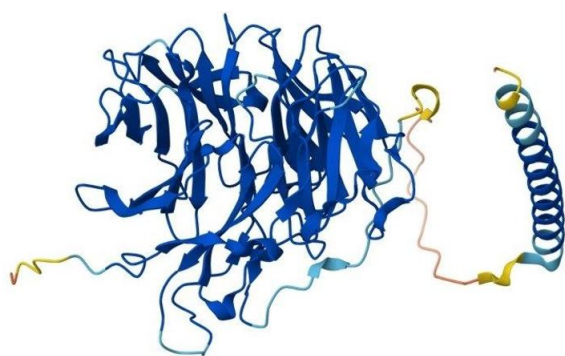
Application Notes: We expect the protein to work for functional studies. As the protein has not been tested for functional studies yet we cannot offer a guarantee though.

Restrictions: For Research Use only

## Handling

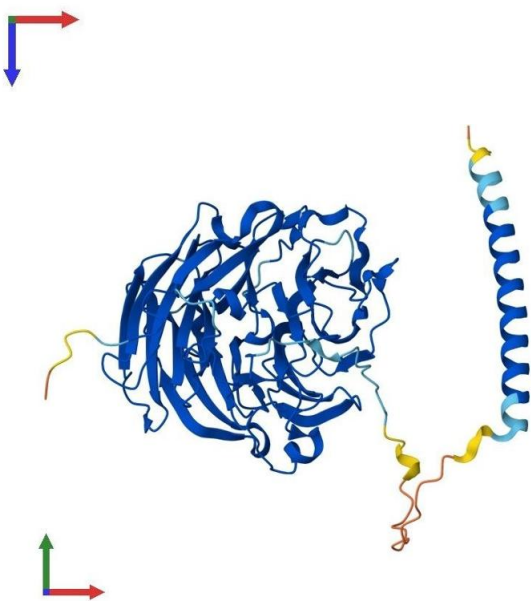
Format:	Liquid
Buffer:	The buffer composition is at the discretion of the manufacturer.
Handling Advice:	Avoid repeated freeze-thaw cycles.
Storage:	-80 °C
Storage Comment:	Store at -80°C.
Expiry Date:	12 months

## Images



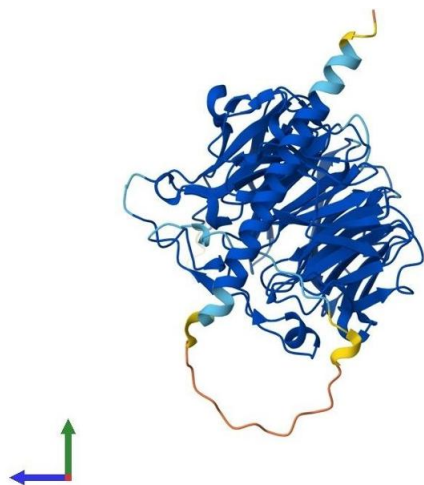
### Protein Structure

**Image 1.** AlphaFold protein structure prediction of Mouse Recombinant Coro6 Protein, UniprotID Q920M5



### Protein Structure

**Image 2.** AlphaFold protein structure prediction of Mouse Recombinant Coro6 Protein, UniprotID Q920M5



### Protein Structure

**Image 3.** AlphaFold protein structure prediction of Mouse Recombinant Coro6 Protein, UniprotID Q920M5