

Datasheet for ABIN756037

**anti-AXL antibody (pTyr698, pTyr702, pTyr703)**[Go to Product page](#)**1** Image

## Overview

Quantity:	100 µL
Target:	AXL
Binding Specificity:	pTyr698, pTyr702, pTyr703
Reactivity:	Human, Mouse, Rat
Host:	Rabbit
Clonality:	Polyclonal
Conjugate:	This AXL antibody is un-conjugated
Application:	Western Blotting (WB), ELISA, Immunohistochemistry (Paraffin-embedded Sections) (IHC (p)), Immunofluorescence (Cultured Cells) (IF (cc)), Immunofluorescence (Paraffin-embedded Sections) (IF (p)), Immunohistochemistry (Frozen Sections) (IHC (fro))

## Product Details

Immunogen:	KLH conjugated synthetic phosphopeptide derived from human AXL around the phosphorylation site of Tyr698+Tyr702+Tyr703
Isotype:	IgG
Cross-Reactivity:	Human, Mouse, Rat
Predicted Reactivity:	Dog,Cow,Pig,Horse,Rabbit
Purification:	Purified by Protein A.

## Target Details

Target:	AXL
---------	-----

## Target Details

Alternative Name:	AXL+ ( <a href="#">AXL Products</a> )
Background:	<p>Synonyms: Adhesion related kinase, AI323647, Ark, Axl, AXL oncogene, AXL receptor tyrosine kinase, AXL transforming gene, AXL transforming sequence/gene, EC 2.7.10.1, JTK11, Oncogene AXL, Tyro7, Tyrosine protein kinase receptor UFO, Tyrosine-protein kinase receptor UFO, UFO, UFO_HUMAN.</p> <p>Background: The protein encoded by this gene is a member of the receptor tyrosine kinase subfamily. Although it is similar to other receptor tyrosine kinases, the Axl protein represents a unique structure of the extracellular region that juxtaposes IgL and FNIII repeats. It transduces signals from the extracellular matrix into the cytoplasm by binding growth factors such as vitamin K dependent protein growth arrest specific gene 6. It is involved in the stimulation of cell proliferation. This receptor can also mediate cell aggregation by homophilic binding. Axl is a chronic myelogenous leukemia associated oncogene and also associated with colon cancer and melanoma. The Axl gene is evolutionarily conserved between vertebrate species. This gene has two different alternatively spliced transcript variants (AXL1 and AXL2).</p>
Gene ID:	558
Pathways:	<a href="#">RTK Signaling</a> , <a href="#">Cellular Response to Molecule of Bacterial Origin</a>

## Application Details

Application Notes:	WB 1:300-5000 ELISA 1:500-1000 IHC-P 1:200-400 IHC-F 1:100-500 IF(IHC-P) 1:50-200 IF(IHC-F) 1:50-200 IF(ICC) 1:50-200
Restrictions:	For Research Use only

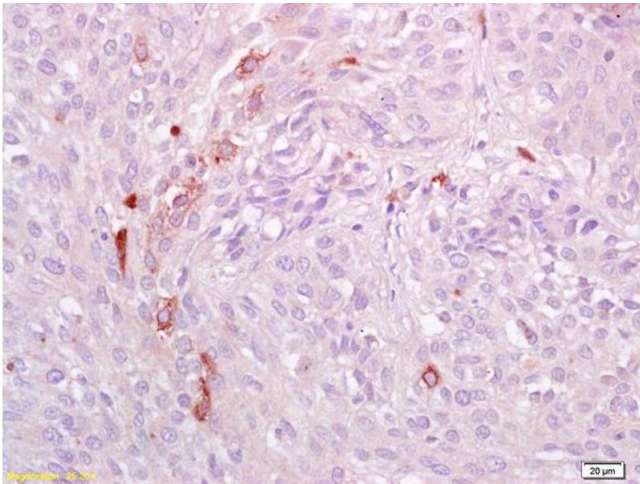
## Handling

Format:	Liquid
Concentration:	1 µg/µL
Buffer:	0.01M TBS( pH 7.4) with 1 % BSA, 0.02 % Proclin300 and 50 % Glycerol.
Preservative:	ProClin

## Handling

Precaution of Use:	This product contains ProClin: a POISONOUS AND HAZARDOUS SUBSTANCE, which should be handled by trained staff only.
Storage:	4 °C,-20 °C
Storage Comment:	Shipped at 4°C. Store at -20°C for one year. Avoid repeated freeze/thaw cycles.
Expiry Date:	12 months

## Images



### Immunohistochemistry

**Image 1.** Formalin-fixed and paraffin embedded human lung carcinoma labeled with Anti-phospho-AXL (Tyr698+Tyr702+Tyr703) Polyclonal Antibody, Unconjugated (ABIN756037) at 1:200 followed by conjugation to the secondary antibody and DAB staining.