

Datasheet for ABIN756127
anti-AQP2 antibody (pSer269)[Go to Product page](#)

2 Images

Overview

Quantity:	100 µL
Target:	AQP2
Binding Specificity:	pSer269
Reactivity:	Rat
Host:	Rabbit
Clonality:	Polyclonal
Conjugate:	This AQP2 antibody is un-conjugated
Application:	Western Blotting (WB), ELISA, Immunofluorescence (Paraffin-embedded Sections) (IF (p)), Immunofluorescence (Cultured Cells) (IF (cc)), Immunohistochemistry (Paraffin-embedded Sections) (IHC (p)), Immunohistochemistry (Frozen Sections) (IHC (fro))

Product Details

Immunogen:	KLH conjugated synthetic phosphopeptide derived from mouse AQP2 around the phosphorylation site of Ser269
Isotype:	IgG
Cross-Reactivity:	Rat
Predicted Reactivity:	Mouse,Dog,Cow,Pig
Purification:	Purified by Protein A.

Target Details

Target:	AQP2
---------	------

Target Details

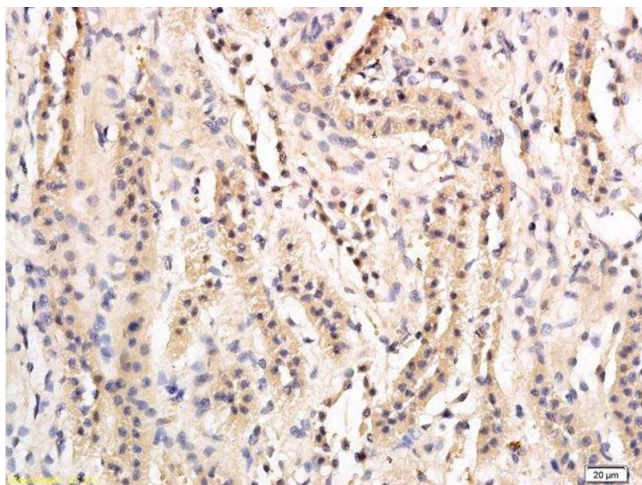
Alternative Name:	AQP2 (AQP2 Products)
Background:	<p>Synonyms: ADH water channel, AQP 2, AQP CD, AQP2, AQPCD, Aquaporin 2 collecting duct, Aquaporin CD, Aquaporin2, Aquaporine 2, Collecting duct water channel protein, MGC34501, Water channel protein for renal collecting duct, WCH CD, WCHCD.</p> <p>Background: This gene encodes a water channel protein located in the kidney collecting tubule. It belongs to the MIP/aquaporin family, some members of which are clustered together on chromosome 12q13. Mutations in this gene have been linked to autosomal dominant, and recessive forms of nephrogenic diabetes insipidus. Belongs to the MIP/aquaporin (TC 1.A.8) family.</p>
Gene ID:	359
Pathways:	Response to Water Deprivation

Application Details

Application Notes:	WB 1:300-5000 ELISA 1:500-1000 IHC-P 1:200-400 IHC-F 1:100-500 IF(IHC-P) 1:50-200 IF(IHC-F) 1:50-200 IF(ICC) 1:50-200
Restrictions:	For Research Use only

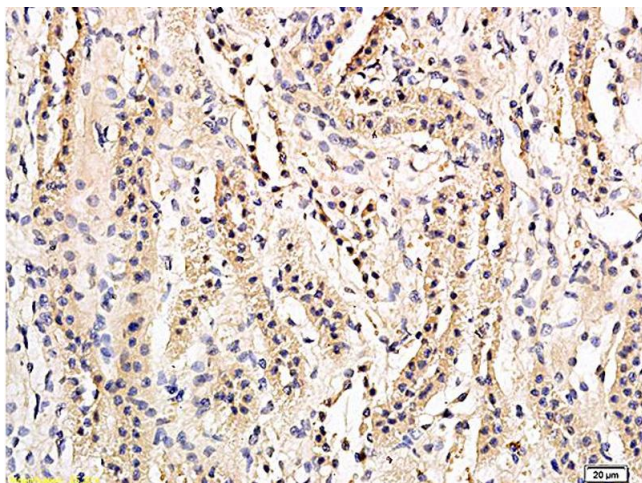
Handling

Format:	Liquid
Concentration:	1 µg/µL
Buffer:	0.01M TBS(pH 7.4) with 1 % BSA, 0.02 % Proclin300 and 50 % Glycerol.
Preservative:	ProClin
Precaution of Use:	This product contains ProClin: a POISONOUS AND HAZARDOUS SUBSTANCE, which should be handled by trained staff only.
Storage:	4 °C,-20 °C
Storage Comment:	Shipped at 4°C. Store at -20°C for one year. Avoid repeated freeze/thaw cycles.



Immunohistochemistry (Paraffin-embedded Sections)

Image 1. Formalin-fixed and paraffin embedded rat kidney labeled with Anti-phospho-AQP2(Ser269) Polyclonal Antibody, Unconjugated followed by conjugation to the secondary antibody and DAB staining



Immunohistochemistry

Image 2. Formalin-fixed and paraffin embedded rat kidney labeled with Anti-phospho-AQP2(Ser269) Polyclonal Antibody, Unconjugated (ABIN756127) followed by conjugation to the secondary antibody and DAB staining