

Datasheet for ABIN7562710

## KLF10/TIEG1 Protein (AA 1-479) (His tag)



[Go to Product page](#)

### 3 Images

#### Overview

Quantity:	1 mg
Target:	KLF10/TIEG1 (KLF10)
Protein Characteristics:	AA 1-479
Origin:	Mouse
Source:	HEK-293 Cells
Protein Type:	Recombinant
Purification tag / Conjugate:	This KLF10/TIEG1 protein is labelled with His tag.

#### Product Details

Purpose:	Custom-made recombinant Klf10 Protein expressed in mammalian cells.
Sequence:	<p>MLNFGASLQQ ASEGKMELIS EKPREGMHPW DKAEQSDFEA VEALMSMSCD WKSHFKKYLE  NRPVTPVSDT SEDDSLPGT PDLQTVPAFC LTPPYSPSDF EPSQGSNLTA SAPSTGHFKS  FSDAAKPPGA TPFKEEKNP LAAPPLPKAQ ATSVIRHTAD AQLCNHQSCP VKAASILNYQ  DNSFRRRTHG NVEATRKNIP CAAVSPNRSK PEPSTVSDGD EKAGAALYDF AVPSSETVIC  RSQPAPSSPV QKSVLVSSPT VSTGGVPLP VICQMVPLPA NNSLVSTVVP STPPSQPPAV  CSPVLFMGTQ VPEGTVVFWV PQPVVQSRP PVVSPSGTRL SPIAPAGFS PSAARVTPQI  DSSRVRSHIC SHPGCGKTYF KSSHLKAHVR THTGEKPFSC SWKGCERRFA RSELSRHRR  THTGEKKFAC PMCDRRFMRS DHLTKHARRH LSAKKLPNWQ MEVSKLNDIA LPPTPASAQ</p> <p><b>Sequence without tag. The proposed Purification-Tag is based on experiences with the expression system, a different complexity of the protein could make another tag necessary. In case you have a special request, please contact us.</b></p>
Specificity:	If you are looking for a specific domain and are interested in a partial protein or a different

## Product Details

isoform, please contact us regarding an individual offer.

### Characteristics:

#### Key Benefits:

- Made to order protein - from design to production - by highly experienced protein experts.
- Protein expressed in mammalian cells and purified in one-step affinity chromatography
- The optimized expression system ensures reliability for intracellular, secreted and transmembrane proteins.
- State-of-the-art algorithm used for plasmid design (Gene synthesis).

This protein is a made-to-order protein and will be made for the first time for your order. Our experts in the lab try to ensure that you receive soluble protein.

If you are not interested in a full length protein, please contact us for individual protein fragments.

The big advantage of ordering our made-to-order proteins in comparison to ordering custom made proteins from other companies is that there is no financial obligation in case the protein cannot be expressed or purified.

### Purity:

> 90 % as determined by Bis-Tris PAGE, anti-tag ELISA, Western Blot and analytical SEC (HPLC)

### Grade:

custom-made

## Target Details

### Target:

KLF10/TIEG1 (KLF10)

### Alternative Name:

Klf10 ([KLF10 Products](#))

### Background:

Krueppel-like factor 10 (GDNF-inducible factor) (Transcription factor GIF) (mGIF) (Transforming growth factor-beta-inducible early growth response protein 1) (TGFB-inducible early growth response protein 1) (TIEG-1),FUNCTION: Transcriptional repressor which binds to the consensus sequence 5'-GGTGTG-3'. May play a role in the cell cycle regulation (By similarity). Plays a role in the regulation of the circadian clock, binds to the GC box sequence in the promoter of the core clock component ARTNL/BMAL1 and represses its transcriptional activity. Regulates the circadian expression of genes involved in lipogenesis, gluconeogenesis, and glycolysis in the liver. Represses the expression of PCK2, a rate-limiting step enzyme of gluconeogenesis. {ECO:0000250|UniProtKB:Q13118, ECO:0000269|PubMed:20070857, ECO:0000269|PubMed:20385766}.

### Molecular Weight:

51.8 kDa

## Target Details

UniProt:	<a href="#">O89091</a>
Pathways:	<a href="#">Stem Cell Maintenance</a>

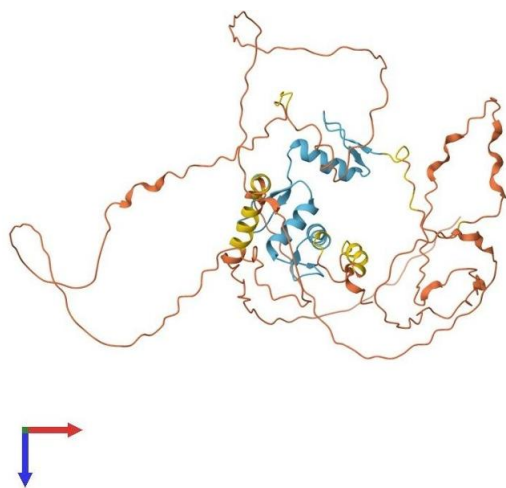
## Application Details

Application Notes:	We expect the protein to work for functional studies. As the protein has not been tested for functional studies yet we cannot offer a guarantee though.
Restrictions:	For Research Use only

## Handling

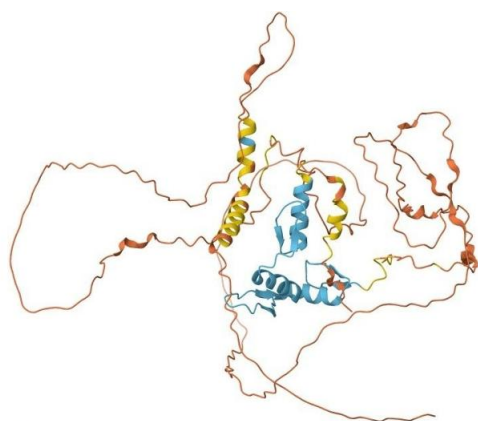
Format:	Liquid
Buffer:	The buffer composition is at the discretion of the manufacturer.
Handling Advice:	Avoid repeated freeze-thaw cycles.
Storage:	-80 °C
Storage Comment:	Store at -80°C.
Expiry Date:	12 months

## Images



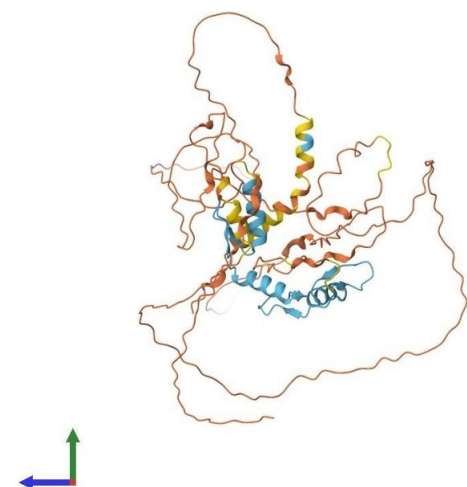
### Protein Structure

**Image 1.** AlphaFold protein structure prediction of Mouse Recombinant Klf10 Protein, UniprotID O89091



#### Protein Structure

**Image 2.** AlphaFold protein structure prediction of Mouse Recombinant Klf10 Protein, UniprotID O89091



#### Protein Structure

**Image 3.** AlphaFold protein structure prediction of Mouse Recombinant Klf10 Protein, UniprotID O89091