

Datasheet for ABIN7563966
SORBS1 Protein (AA 1-1290) (His tag)



[Go to Product page](#)

3 Images

Overview

Quantity:	1 mg
Target:	SORBS1
Protein Characteristics:	AA 1-1290
Origin:	Mouse
Source:	HEK-293 Cells
Protein Type:	Recombinant
Purification tag / Conjugate:	This SORBS1 protein is labelled with His tag.

Product Details

Purpose:	Predefined custom protein recombinant Sorbs1 Protein expressed in mammalian cells.
Sequence:	<p>MSSECDVGSS KAVVNGLASG NHGPDKDMDP TKICTGKGTV TLRASSSYRG TPSSSPVSPQ ESPKHESKSG LEPEDPSADE WKLSSSADTN GNAQPSPLAA KGYRSVHPSL SADKPQGSPL LNEVSSSHIE TDSQDFPPTS RPSSAYPSTT IVNPTIVLLQ HNRDPASERR AGEQDPVPTP AELTSPGRAS ERRAKDASRR VVRSADQLSD VSTDEVG IPL RNTERSKD WY KTMFKQIHKL NRDDSDVHS PRYSFSDDTK SPLSVPRSKS EMNYIEGEKV VKRSATLPLP ARSSSLKSSP ERNDWEPLDK KVDTRKYRAE PKSIEYQPG KSSVLTNEKM SRDISPEEID LKNEPWYKFF SELEFGRPTN LEKDL SFCQA ELEADLEKVE TVNKSPSANS PQSSAVSPTP DITSEPPGYI YSSNFHAVKR ESDGTPGGLA SLENERQIYK SVLEGGDIPL QGLSGLKRPS SSASTKVDRK GGNAHMISSS SVHSRTFHTS NALGPGCKHK KPLSAAKACI SEILPSKFKP RLSAPSALLQ EQKSVLLPSE KAQCENLCV SLNDSKRGLP LRVGGSIENL LMRSRRDYDS KSSSTMSLQE YGTSSRRPCP LSRKAGLHFS MFYRDMHQIN RAGLSLGSIS SSSVRDLASH FERSLTLAR GELGASQEGS EHIPKHTVSS RITAFEQLIQ RSRSMPSLDF SGRLSKSPTP VLSRSGLTSA</p>

RSAESLLEST KLRPREMDGM DSGGVYASPT CSNMADHALS FRSLVPSEPL SICSDDELHDC
SNVSNDSREG SGGSVHGDFP KHRLNKCKGT CPASYTRFTT IRKHEQQSSR QSDWRSDSRG
DKNSLLRNIH LMSPLPFRK KPLQQHPRQP PPSDSSESPA GQKADLPCHD PQDQPHSAGK
PQVPTLSSR HTMARLSHNS EPPLDRPAGL EDCTRAINNG NPVPYSDHGL DRNNNPQSEL
AAAHGDESP RHFIPADYLE STEEFIRRRH DDKEKLLADQ RRLKREQEEA DIAARRHTGV
IPTHHQFITN ERFGDLLNID DTAKRKSGLE MRPARAKFDF KAQTLKELPL QKGDVVYIYR
QIDQNWYEGE HHGRVGIFPR TYIELLPPAE KAQPRKLAPV QVLEYGEAIA KFNFNQDTQV
EMSFRRKGERI TLLRQVDENW YEGRIPGTSR QGIFPITYVD VLKRPLVKTP VDYIDLPISS
SPRSATVSP QQPQAQRRV TPDRSQPSLD LCSYQALYSY VPQNDDELEL RDGDIVDVME
KCDDGWVFGT SRRTTRQFGTF PGNVVKPLYL **Sequence without tag. The proposed Strep-Tag is based on experience with the expression system. Our team may suggest an additional tag depending on the complexity of the protein. If you have a special request, please contact us.**

Specificity: If you are looking for a specific domain and are interested in a partial protein or a different isoform, please contact us regarding an individual offer.

Characteristics: **Key Benefits:**

- Predefined custom protein - from design to production - by highly experienced protein experts.
- Protein expressed in mammalian cells and purified in one-step affinity chromatography
- The optimized expression system ensures reliability for intracellular, secreted and transmembrane proteins.
- State-of-the-art algorithm used for plasmid design (Gene synthesis).

This protein is a predefined protein and will be made for the first time for your order. Our experts in the lab try to ensure that you receive soluble protein.

If you are not interested in a full length protein, please contact us for individual protein fragments.

The big advantage of ordering our predefined custom proteins in comparison to ordering custom-made proteins from other companies is that there is no financial obligation in case the protein cannot be expressed or purified.

Purity: > 90 % as determined by Bis-Tris PAGE, anti-tag ELISA, Western Blot and analytical SEC (HPLC)

Grade: custom-made

Target Details

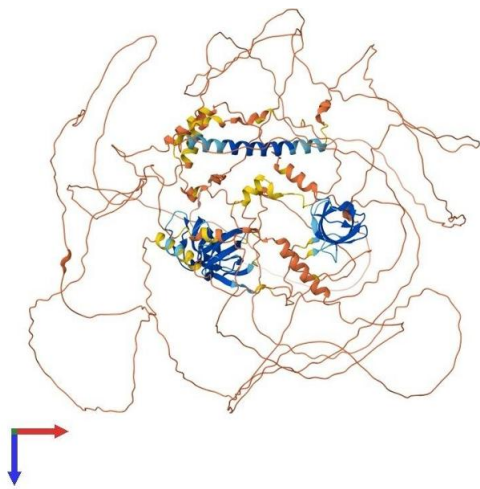
Target:	SORBS1
Alternative Name:	Sorbs1 (SORBS1 Products)
Background:	Sorbin and SH3 domain-containing protein 1 (Ponsin) (SH3 domain protein 5) (SH3P12) (c-Cbl-associated protein) (CAP),FUNCTION: Plays a role in tyrosine phosphorylation of CBL by linking CBL to the insulin receptor. Required for insulin-stimulated glucose transport. Involved in formation of actin stress fibers and focal adhesions. {ECO:0000269 PubMed:11001060, ECO:0000269 PubMed:9447983, ECO:0000269 PubMed:9461600}.
Molecular Weight:	143.1 kDa
UniProt:	Q62417
Pathways:	Cell-Cell Junction Organization, Regulation of Carbohydrate Metabolic Process

Application Details

Application Notes:	We expect the protein to work for functional studies. As the protein has not been tested for functional studies yet we cannot offer a guarantee though.
Restrictions:	For Research Use only

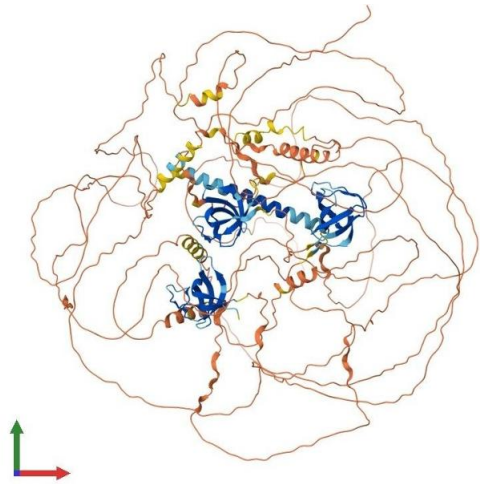
Handling

Format:	Liquid
Buffer:	The buffer composition is at the discretion of the manufacturer.
Handling Advice:	Avoid repeated freeze-thaw cycles.
Storage:	-80 °C
Storage Comment:	Store at -80°C.
Expiry Date:	12 months



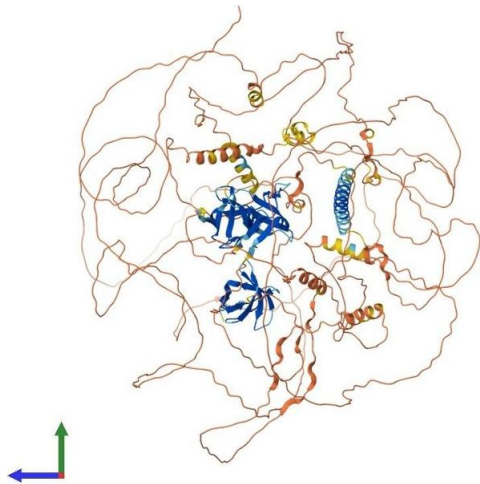
Protein Structure

Image 1. AlphaFold protein structure prediction of Mouse Recombinant Sorbs1 Protein, UniprotID Q62417



Protein Structure

Image 2. AlphaFold protein structure prediction of Mouse Recombinant Sorbs1 Protein, UniprotID Q62417



Protein Structure

Image 3. AlphaFold protein structure prediction of Mouse Recombinant Sorbs1 Protein, UniprotID Q62417