

Datasheet for ABIN7565554
CCR3 Protein (AA 1-355) (GST tag)



[Go to Product page](#)

1 Image

Overview

Quantity:	2 µg
Target:	CCR3
Protein Characteristics:	AA 1-355
Origin:	Human
Source:	Wheat germ
Protein Type:	Recombinant
Purification tag / Conjugate:	This CCR3 protein is labelled with GST tag.
Application:	Western Blotting (WB), ELISA, Affinity Purification (AP), Antibody Array (AA)

Product Details

Purpose:	CCR3 (Human) Recombinant Protein (P01)
Sequence:	MTTSLDVTVET FGTTSSYYDDV GLLCEKADTR ALMAQFVPPL YSLVFTVGLL GNVVVVMILI KYRRLRIMTN IYLLNLAISD LLFLVTLPFW IHYVRGHNWV FGHGMCKLLS GFYHTGLYSE IFFIILLTID RYLAIHAVF ALRARTVTFG VITSIVTWGL AVLAALPEFI FYETEELFEE TLCSALYPED TVYSWRHFHT LRMTIFCLVL PLLVMAICYT GIIKTLLRCP SKKKYKAIRL IFVIMAVFFI FWTPYNVAIL LSSYQSILFG NDCERSKHL D LVMLVTEVIA YSHCCMNPVI YAFVGERFRK YLRHFFHRHL LMHLGRYIPF LPSEKLERTS SVSPSTAEPE LSIVF
Characteristics:	Human CCR3 full-length ORF (NP_001828.1, 1 a.a. - 355 a.a.) recombinant protein with GST-tag at N-terminal.
Purification:	in vitro wheat germ expression system

Target Details

Target:	CCR3
Alternative Name:	CCR3 (CCR3 Products)
Background:	Full Gene Name: chemokine (C-C motif) receptor 3 Synonyms: CC-CKR-3,CD193,CKR3,CMKBR3,MGC102841
Gene ID:	1232
NCBI Accession:	NM_001837

Application Details

Application Notes:	Optimal working dilution should be determined by the investigator.
Comment:	Preparation method: in vitro, wheat germ expression system Product Quality tested by: 12.5% SDS-PAGE Stained with Coomassie Blue.
Restrictions:	For Research Use only

Handling

Buffer:	50 mM Tris-HCl, 10 mM reduced Glutathione, pH =8.0 in the elution buffer.
Handling Advice:	Aliquot to avoid repeated freezing and thawing.
Storage:	-80 °C
Storage Comment:	Best use within three months from the date of receipt of this protein.

Images

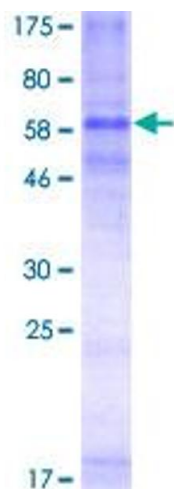


Image 1.