

Datasheet for ABIN7565560
OTX1 Protein (AA 1-354) (GST tag)



[Go to Product page](#)

1 Image

Overview

Quantity:	2 µg
Target:	OTX1
Protein Characteristics:	AA 1-354
Origin:	Human
Source:	Wheat germ
Protein Type:	Recombinant
Purification tag / Conjugate:	This OTX1 protein is labelled with GST tag.
Application:	ELISA, Western Blotting (WB), Affinity Purification (AP), Antibody Array (AA)

Product Details

Purpose:	OTX1 (Human) Recombinant Protein (P01)
Sequence:	MMSYLKQPPY GMNGLGLAGP AMDLLHPSVG YPATPRKQRR ERTTFTRS QL DVLEALFAKT RYPDIFMREE VALKINLPES RVQVWFKNRR AKCRQQQSG SGTKSRPAKK KSSPVRESSG SESSGQFTPP AVSSSASSSS SASSSSANPA AAAAAAGLGGN PVAAASSLST PAASSIWSPA SISPGSAPAS VSVPEPLAAP SNTSCMQRSV AAGAATAAAS YPMSYGQGGG YGQGYPTPSS SYFGGVDCSS YLAPMHSHHH PHQLSPMAPS SMAGHHHHHP HAHHPLSQSS GHHHHHHHHH HQQYGGGSLA FNSADCLDYK EPGAAAASSA WKLNFNSPDC LDYKDQASWR FQVL
Characteristics:	Human OTX1 full-length ORF (NP_055377.1, 1 a.a. - 354 a.a.) recombinant protein with GST-tag at N-terminal.
Purification:	in vitro wheat germ expression system

Target Details

Target:	OTX1
Alternative Name:	OTX1 (OTX1 Products)
Background:	Gene: orthodenticle homeobox 1 Synonyms: FLJ38361, MGC15736
Gene ID:	5013
NCBI Accession:	NM_014562

Application Details

Application Notes:	Optimal working dilution should be determined by the investigator.
Restrictions:	For Research Use only

Handling

Buffer:	50 mM Tris-HCl, 10 mM reduced Glutathione, pH =8.0 in the elution buffer.
Handling Advice:	Aliquot to avoid repeated freezing and thawing.
Storage:	-80 °C
Storage Comment:	Best use within three months from the date of receipt of this protein.

Images

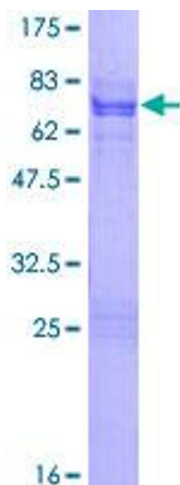


Image 1.