

Datasheet for ABIN7565570
FANCM Protein (AA 1-669) (GST tag)



[Go to Product page](#)

1 Image

Overview

Quantity:	2 µg
Target:	FANCM
Protein Characteristics:	AA 1-669
Origin:	Human
Source:	Wheat germ
Protein Type:	Recombinant
Purification tag / Conjugate:	This FANCM protein is labelled with GST tag.
Application:	Antibody Array (AA), Affinity Purification (AP), ELISA, Western Blotting (WB)

Product Details

Purpose:	FANCM (Human) Recombinant Protein (P01)
Sequence:	MSGRQRTLQ TWGSSISRSS GTPGCSSGTE RPQSPGSSKA PLPAAAEQQL ESDDVLLVA AYEAERQLCL ENGGFCTSAG ALWIYPTNCP VRDYQLHISR AALFCNTLVC LPTGLGKTFI AAVVMYNYFYR WFPSGKVVFM APTKPLVTQQ IEACYQVMGI PQSHMAEMTG STQASTRKEI WCKSRVLFLLT PQVMVNDLSR GACPAAEIKC LVIDEAHKAL GNYAYCQVVR ELVKYTNHFR ILALSATPGS DIKAVQQVIT NLLIGQIELR SEDSPDILTY SHERKVEKLI VPLGEELAAI QKTYIQILES FARSLIQRNV LMRRDIPNLT KYQIILARDQ FRKNPSPNIV GIQQGIIEGE FAICISLYHG YELLQQMGMR SLYFFLCGIM DGTKGMTRSK NELGRNEDFM KLYNHLECMF ARTRSTSANG ISAIQQGDKN KKFVYSHPKL KKLEEVVIEH FKSNAENTT EKKRDETRVM IFSSFRDSVQ EIAEMLSQHQ PIIRVMTFVG HASGKSTKGF TQKEQLEVVK QFRDGGYNTL VSTCVGEEGL DIGEVDLIIC FDSQKSPIRL VQRMGRTGRK RQGRIVIILS EGREERIYNQ SQSNKRSIYK AISSNRQVLH FYQRSPRMVP DGINPKLHKM FITHGVYEPE KPSRNLQRKS SIFSYRDGK

Product Details

Characteristics:	Human FANCM full-length ORF (AAH36056.1, 1 a.a. - 669 a.a.) recombinant protein with GST-tag at N-terminal.
Purification:	in vitro wheat germ expression system

Target Details

Target:	FANCM
Alternative Name:	FANCM (FANCM Products)
Background:	Gene: Fanconi anemia, complementation group M Synonyms: FAAP250, KIAA1596, MGC176453
Gene ID:	57697
Pathways:	DNA Damage Repair

Application Details

Application Notes:	Optimal working dilution should be determined by the investigator.
Restrictions:	For Research Use only

Handling

Buffer:	50 mM Tris-HCl, 10 mM reduced Glutathione, pH =8.0 in the elution buffer.
Handling Advice:	Aliquot to avoid repeated freezing and thawing.
Storage:	-80 °C
Storage Comment:	Best use within three months from the date of receipt of this protein.

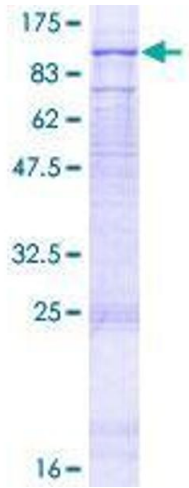


Image 1.