

Datasheet for ABIN7565574  
**GLIS2 Protein (AA 1-524) (GST tag)**



[Go to Product page](#)

1 Image

## Overview

Quantity:	2 µg
Target:	GLIS2
Protein Characteristics:	AA 1-524
Origin:	Human
Source:	Wheat germ
Protein Type:	Recombinant
Purification tag / Conjugate:	This GLIS2 protein is labelled with GST tag.
Application:	Western Blotting (WB), ELISA, Antibody Array (AA), Affinity Purification (AP)

## Product Details

Purpose:	GLIS2 (Human) Recombinant Protein (P01)
Sequence:	MHSLDEPLDL KLSITKLRAA REKRERTLGV VRPRALHREL GLVDDSPTPG SPGSPPSGFL LNSKFPEKVE GRFSAAPLVD LSLPPSGLD SPNGSSSLSP ERQNGDLPP VPSASDFQPL RYLDGVPSSF QFFLPLGSGG ALHLPASSFL TPPKDKCLSP DLPLPKQLVC RWAKCNQLFE LLQDLVDHVN DYHVKPEKDA GYCCHWEGCA RHGRGFNARY KMLIHIRTHT NEKPHRCPTC SKSFSRLENL KIHNRSHTE KPYVCPYEGC NKRYSNSSDR FKHTRTHYVD KPYYCKMPGC HKRYTDPSSL RKHIKAHGHF VSHEQQELLQ LRPPPKPPLP APDGGPYVSG AQIIIPNPAA LFGGGLPGL PLPLAPGLD LSALACNGG GSGGGGMGP GLPGVPLPLN LAKNPLLPSP FGAGGLGPV VLLAGAAGG KAEGEKGRGS VPTRALGMEG HKTPLERTES SCSRPSDGL PLLPGTVLDL STGVNSAASS PEALAPGWVV IPPGSVLLKP AVVN
Characteristics:	Human GLIS2 full-length ORF ( AAI46549.1, 1 a.a. - 524 a.a.) recombinant protein with GST-tag at N-terminal.

## Product Details

---

Purification: in vitro wheat germ expression system

## Target Details

---

Target: GLIS2

Alternative Name: GLIS2 ([GLIS2 Products](#))

Background: Full Gene Name: GLIS family zinc finger 2  
Synonyms: FLJ38247,NPHP7

Gene ID: 84662

## Application Details

---

Application Notes: Optimal working dilution should be determined by the investigator.

Comment: Preparation method: in vitro, wheat germ expression system  
Product Quality tested by: 12.5% SDS-PAGE Stained with Coomassie Blue.

Restrictions: For Research Use only

## Handling

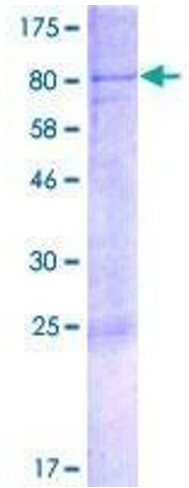
---

Buffer: 50 mM Tris-HCl, 10 mM reduced Glutathione, pH =8.0 in the elution buffer.

Handling Advice: Aliquot to avoid repeated freezing and thawing.

Storage: -80 °C

Storage Comment: Best use within three months from the date of receipt of this protein.



**Image 1.**