

Datasheet for ABIN756667
anti-BMX antibody (pTyr566)

2 Images

[Go to Product page](#)

Overview

Quantity:	100 µL
Target:	BMX
Binding Specificity:	pTyr566
Reactivity:	Human, Mouse
Host:	Rabbit
Clonality:	Polyclonal
Conjugate:	This BMX antibody is un-conjugated
Application:	Western Blotting (WB), ELISA, Immunohistochemistry (Paraffin-embedded Sections) (IHC (p)), Immunofluorescence (Paraffin-embedded Sections) (IF (p)), Immunofluorescence (Cultured Cells) (IF (cc)), Immunohistochemistry (Frozen Sections) (IHC (fro))

Product Details

Immunogen:	KLH conjugated synthetic phosphopeptide derived from human BMX around the phosphorylation site of Tyr566
Isotype:	IgG
Cross-Reactivity:	Human, Mouse
Predicted Reactivity:	Rat,Dog,Cow,Pig,Horse,Rabbit
Purification:	Purified by Protein A.

Target Details

Target:	BMX
---------	-----

Target Details

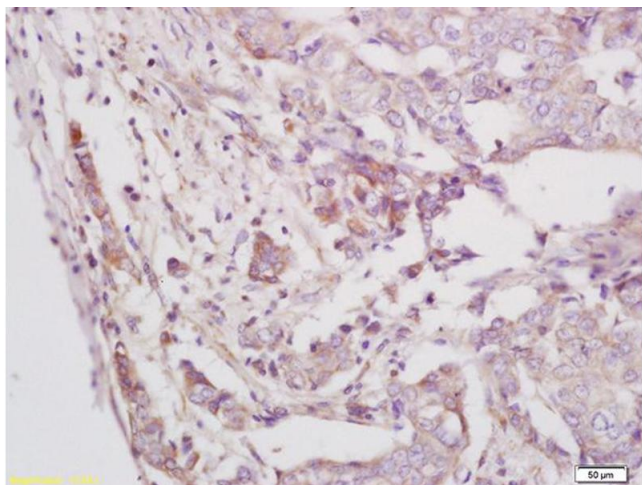
Alternative Name:	BMX (BMX Products)
Background:	<p>Synonyms: BMX phospho Y566, BMX phospho Try566, BMX p-Y566, BMX p-Try566, p-BMX phospho Y566, Protein tyrosine kinase BMX</p> <p>Background: This gene encodes a non-receptor tyrosine kinase belonging to the Tec kinase family. The protein contains a PH-like domain, which mediates membrane targeting by binding to phosphatidylinositol 3,4,5-triphosphate (PIP3), and a SH2 domain that binds to tyrosine-phosphorylated proteins and functions in signal transduction. The protein is implicated in several signal transduction pathways including the Stat pathway, and regulates differentiation and tumorigenicity of several types of cancer cells. Multiple alternatively spliced variants, encoding the same protein, have been identified.[provided by RefSeq, Sep 2009].</p>
Gene ID:	660

Application Details

Application Notes:	WB 1:300-5000 ELISA 1:500-1000 IHC-P 1:200-400 IHC-F 1:100-500 IF(IHC-P) 1:50-200 IF(IHC-F) 1:50-200 IF(ICC) 1:50-200
Restrictions:	For Research Use only

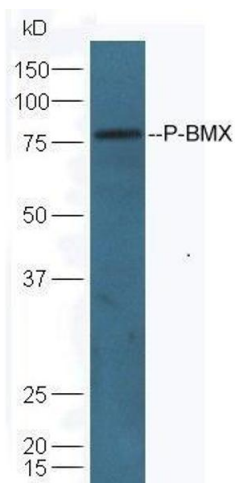
Handling

Format:	Liquid
Concentration:	1 µg/µL
Buffer:	0.01M TBS(pH 7.4) with 1 % BSA, 0.02 % Proclin300 and 50 % Glycerol.
Preservative:	ProClin
Precaution of Use:	This product contains ProClin: a POISONOUS AND HAZARDOUS SUBSTANCE, which should be handled by trained staff only.
Storage:	4 °C,-20 °C
Storage Comment:	Shipped at 4°C. Store at -20°C for one year. Avoid repeated freeze/thaw cycles.



Immunohistochemistry

Image 1. Formalin-fixed and paraffin embedded human breast carcinoma labeled with Anti-Phospho-BMX/ETK (Tyr556) Polyclonal Antibody, Unconjugated (ABIN756667) at 1:200 followed by conjugation to the secondary antibody and DAB staining



Western Blotting

Image 2. Lane 1: mouse lung lysates Lane 2: mouse kidney lysates probed with Anti-BMX (Tyr566) Polyclonal Antibody, Unconjugated at 1:5000 90min in 37°C.