

Datasheet for ABIN756787  
**anti-SNRPE antibody (pSer446)**[Go to Product page](#)

## 1 Image

## Overview

Quantity:	100 µL
Target:	SNRPE
Binding Specificity:	pSer446
Reactivity:	Mouse, Rat
Host:	Rabbit
Clonality:	Polyclonal
Conjugate:	This SNRPE antibody is un-conjugated
Application:	Western Blotting (WB), ELISA, Immunofluorescence (Cultured Cells) (IF (cc)), Immunofluorescence (Paraffin-embedded Sections) (IF (p)), Immunohistochemistry (Paraffin- embedded Sections) (IHC (p)), Immunohistochemistry (Frozen Sections) (IHC (fro))

## Product Details

Immunogen:	KLH conjugated synthetic phosphopeptide derived from human B-Raf around the phosphorylation site of Ser446
Isotype:	IgG
Cross-Reactivity:	Mouse, Rat
Predicted Reactivity:	Human,Dog,Cow,Pig,Horse,Chicken,Rabbit
Purification:	Purified by Protein A.

## Target Details

Target:	SNRPE
---------	-------

## Target Details

Alternative Name: B-Raf ([SNRPE Products](#))

Background: Synonyms: B Raf phospho S446, p-B Raf phospho S446, 94 kDa B raf protein, B raf 1, B Raf proto oncogene serine threonine protein kinase, BRAF 1, Braf, BRAF1, cRmil, MGC126806, MGC138284, Murine sarcoma viral v-raf oncogene homolog B1, Murine sarcoma viral v raf oncogene homolog B1, p94, RAFB 1, RAFB1, v raf murine sarcoma viral oncogene homolog B1, FLJ95109.

Background: The Raf kinases are important intermediates in signal transduction. Raf protein family members, including A Raf and B Raf, have intrinsic serine/threonine kinase activity. Interaction between Ras proteins and Raf proteins results in Raf-mediated phosphorylation and activation of MEK (also known as MAP kinase kinase). Defects in BRAF are involved in a wide range of cancers. B-Raf is a serine/threonine protein kinase that acts as a signal transducer from membrane-associated receptors to nuclear transcription factors. 1 BRAF is important for the regulation of cell proliferation and determination of cell fate during embryogenesis. BRAF acts downstream of Ras and upstream of MEK in the Ras-Raf-MEK-ERK signal transduction pathway, which is a conserved RAS-activated protein kinase cascade that regulates cell growth, proliferation, and differentiation in response to growth factors, cytokines, and hormones.

Gene ID: 673

Pathways: [Ribonucleoprotein Complex Subunit Organization](#), [Hepatitis C](#)

## Application Details

Application Notes: WB 1:300-5000  
ELISA 1:500-1000  
IHC-P 1:200-400  
IHC-F 1:100-500  
IF(IHC-P) 1:50-200  
IF(IHC-F) 1:50-200  
IF(ICC) 1:50-200

Restrictions: For Research Use only

## Handling

Format: Liquid

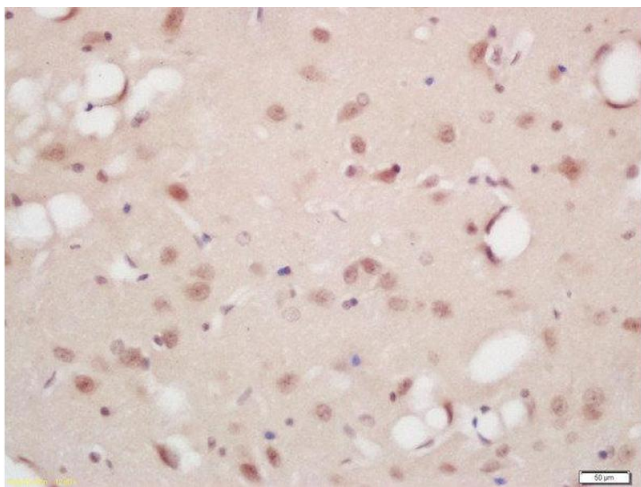
Concentration: 1 µg/µL

Buffer: 0.01M TBS( pH 7.4) with 1 % BSA, 0.02 % Proclin300 and 50 % Glycerol.

## Handling

Preservative:	ProClin
Precaution of Use:	This product contains ProClin: a POISONOUS AND HAZARDOUS SUBSTANCE, which should be handled by trained staff only.
Storage:	4 °C,-20 °C
Storage Comment:	Shipped at 4°C. Store at -20°C for one year. Avoid repeated freeze/thaw cycles.
Expiry Date:	12 months

## Images



### Immunohistochemistry (Paraffin-embedded Sections)

**Image 1.** Formalin-fixed and paraffin embedded rat brain labeled with Rabbit Anti-B-Raf (Ser446) Polyclonal Antibody, Unconjugated (ABIN756787) at 1:200 followed by conjugation to the secondary antibody and DAB staining