



Datasheet for ABIN756982
anti-CDC25B antibody (pSer353)



[Go to Product page](#)

4 Images

Overview

Quantity:	100 µL
Target:	CDC25B
Binding Specificity:	pSer353
Reactivity:	Human, Mouse
Host:	Rabbit
Clonality:	Polyclonal
Conjugate:	This CDC25B antibody is un-conjugated
Application:	Western Blotting (WB), ELISA, Immunohistochemistry (Paraffin-embedded Sections) (IHC (p))

Product Details

Immunogen:	KLH conjugated synthetic phosphopeptide derived from human Cdc25B around the phosphorylation site of Ser353
Isotype:	IgG
Specificity:	This phosphorylation site is homologous to that of Ser351 in Mouse and Ser 349 in Rat.
Cross-Reactivity:	Human, Mouse
Predicted Reactivity:	Rat
Purification:	Purified by Protein A.

Target Details

Target:	CDC25B
---------	--------

Target Details

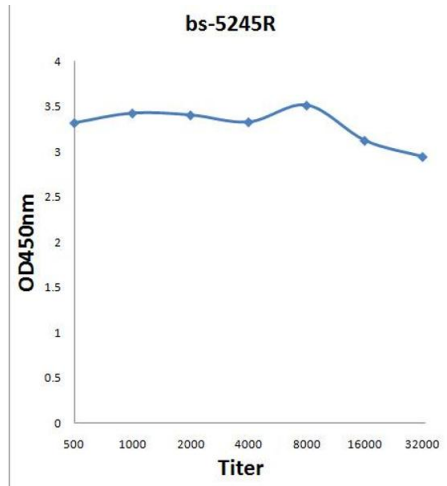
Alternative Name:	Cdc25B (CDC25B Products)
Background:	<p>Synonyms: M-phase inducer phosphatase 2, Dual specificity phosphatase Cdc25B, CDC25B, CDC25HU2</p> <p>Background: Tyrosine protein phosphatase which functions as a dosage-dependent inducer of mitotic progression. Required for G2/M phases of the cell cycle progression and abscission during cytokinesis in a ECT2-dependent manner. Directly dephosphorylates CDK1 and stimulates its kinase activity. The three isoforms seem to have a different level of activity.</p>
Gene ID:	994
UniProt:	P30305
Pathways:	Cell Division Cycle, M Phase, Autophagy

Application Details

Application Notes:	WB 1:300-5000 ELISA 1:500-1000 IHC-P 1:200-400
Restrictions:	For Research Use only

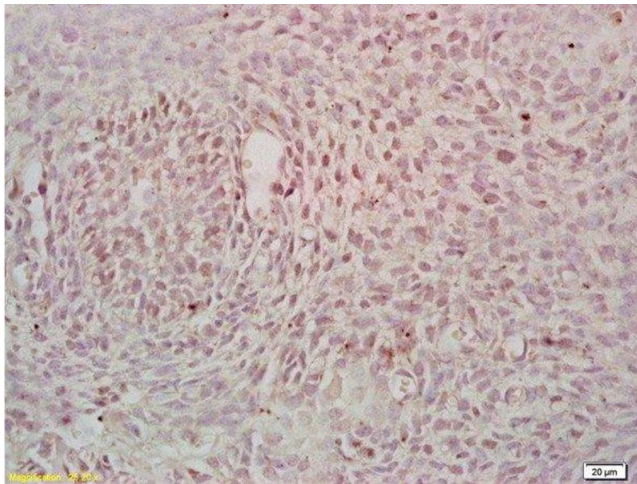
Handling

Format:	Liquid
Concentration:	1 µg/µL
Buffer:	0.01M TBS(pH 7.4) with 1 % BSA, 0.02 % Proclin300 and 50 % Glycerol.
Preservative:	ProClin
Precaution of Use:	This product contains ProClin: a POISONOUS AND HAZARDOUS SUBSTANCE, which should be handled by trained staff only.
Storage:	4 °C, -20 °C
Storage Comment:	Shipped at 4°C. Store at -20°C for one year. Avoid repeated freeze/thaw cycles.
Expiry Date:	12 months



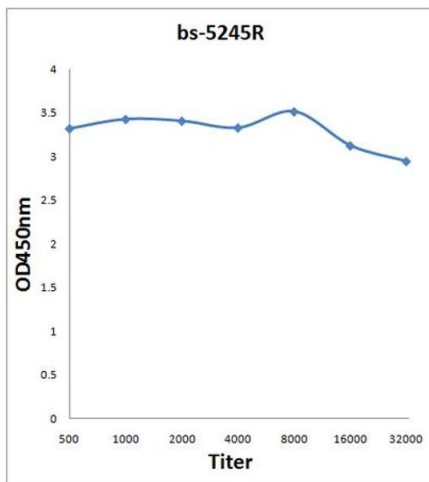
ELISA

Image 1. Formalin-fixed and paraffin embedded mouse embryo labeled with Rabbit Anti phospho-Cdc25B (Ser353) Polyclonal Antibody, Unconjugated (ABIN756982) at 1:200 followed by conjugation to the secondary antibody and DAB staining



Immunohistochemistry (Paraffin-embedded Sections)

Image 2. Formalin-fixed and paraffin embedded mouse embryo labeled with Rabbit Anti phospho-Cdc25B (Ser353) Polyclonal Antibody, Unconjugated at 1:200 followed by conjugation to the secondary antibody and DAB staining



ELISA

Image 3. Antigen: 0.2 µg/100 µL Primary: Antiserum, 1:500, 1:1000, 1:2000, 1:4000, 1:8000, 1:16000, 1:32000; Secondary: HRP conjugated Goat-Anti-Rabbit IgG at 1: 5000; TMB staining; Read the data in MicroplateReader by 450

Please check the [product details page](#) for more images. Overall 4 images are available for ABIN756982.