

Datasheet for ABIN7581209

anti-ENPP2 antibody



[Go to Product page](#)

1 Image

Overview

Quantity:	50 µg
Target:	ENPP2
Reactivity:	Human
Host:	Goat
Clonality:	Polyclonal
Conjugate:	This ENPP2 antibody is un-conjugated
Application:	Western Blotting (WB), ELISA

Product Details

Purpose:	Goat polyclonal antibody targeting human Autotaxin (ATX)
Immunogen:	ATX peptide
Isotype:	IgG
Specificity:	Anti-ATX antibody recognizes endogenous human ATX and is predicted to recognize rat, mouse, horse, and feline ATX based on amino acid conservation.
Purification:	affinity purified

Target Details

Target:	ENPP2
Alternative Name:	Autotaxin (ENPP2 Products)
Background:	ATX, also known as ENPP2, cleaves choline from lysophosphatidylcholine forming

Target Details

lysophosphatidic acid (LPA), a potent mitogen that has been implicated in the pathophysiology of ovarian cancer. ATX has been demonstrated to increase cell motility, neovascularization, proliferation, and aggressiveness of tumors and is upregulated in numerous cancer lineages (non-small cell lung , glioma, mammary carcinoma, renal cell carcinoma, hepatocellular carcinoma). In addition, dysregulation of the ATX/LPA pathway is central to the pathophysiology of idiopathic pulmonary fibrosis, rheumatoid arthritis, and other inflammatory diseases.

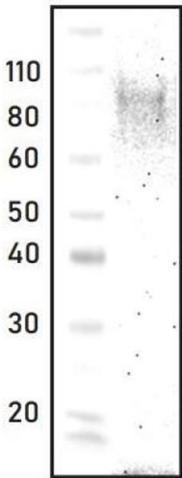
Application Details

Application Notes:	WB – 1:1000, ELISA – 1:1000 Other in vitro and cellular applications are possible using this antibody, but have not been verified.
Restrictions:	For Research Use only

Handling

Format:	Liquid
Buffer:	PBS, pH 7.4
Storage:	4 °C,-20 °C
Storage Comment:	Antibody is stable for up to 1 year at -20°C. Antibody is stable at 4°C for up to 60 days. Avoid repeated freeze/thaw cycles.

Images



Western Blotting

Image 1. The supernatant fraction from HEK293 lysates was blotted using a 1:1000 dilution of ABIN7581181. The expected molecular weight of ATX is approximately 100 kDa.