

Datasheet for ABIN7581783

Recombinant Mouse anti-Rabbit IgG Antibody



[Go to Product page](#)

1 Image

Overview

Quantity:	1 mg
Target:	IgG
Reactivity:	Rabbit
Host:	Mouse
Expression System:	Phage display
Antibody Type:	Recombinant Antibody
Clonality:	Multiclonal
Application:	ELISA, Western Blotting (WB), Flow Cytometry (FACS), Immunofluorescence (IF)

Product Details

Purpose:	recombinant Multiclonal anti-rabbit IgG
Immunogen:	No immunization, animal-free antibody development
Isotype:	IgG2a
Specificity:	This is an antibody developed by antibody phage display technology using a human naive antibody gene library and rabbit IgG antigen. For this antibody both the heavy and light chains are cloned and expressed, generating full-length antibodies.
No Cross-Reactivity:	Cat, Dog, Human, Rabbit
Cross-Reactivity (Details):	No known cross reactivity. No cross reactivity to human IgG, rabbit IgG, dog IgG, cat IgG. Other species were not tested.
Characteristics:	Multiconals are recombinant secondary antibodies that combine the best of polyclonal

Product Details

antisera and hybridoma monoclonal antibodies, while eliminating their disadvantages, plus they add the quality of recombinant reagents. Multiclonal antibodies consist of carefully adjusted mixtures recognizing different epitopes on all subclasses of rabbit IgG. Their respective epitope binding sites do not compete with each other, therefore amplifying signal strengths. Multiclonals can contain up to 17 different individually tested monoclonal recombinant antibodies. This provides the typical advantage of polypeptide recognition which is key to the broad application profile of polyclonal antisera, but eliminates their disadvantages (limited batch sizes and batch-to-batch variations, no long-term reproducibility, undefined composition, unknown constituents). Multiclonals are completely sequence defined, implying their unlimited long-term availability and always identical test results. Their composition of individually characterised antibodies minimizes cross-reactivity with other targets, since they do not contain non-target directed IgG like all animal derived polyclonals do. This allows for a much lower unspecific binding reactivity in many assays compared to animal based products.

Purification: Protein A purification

Grade: Animal-Free

Target Details

Target: IgG

Abstract: [IgG Products](#)

Target Type: Antibody

Molecular Weight: 150 kDa

Application Details

Application Notes: Western Blot: 0.2-5 µg/mL ELISA: 1-12 µg/mL as coating antibody 0.5-5 µg/mL as detection antibody IF: 0.1 - 10 µg/mL Optimal working dilution should be determined by the investigator

Restrictions: For Research Use only

Handling

Format: Liquid

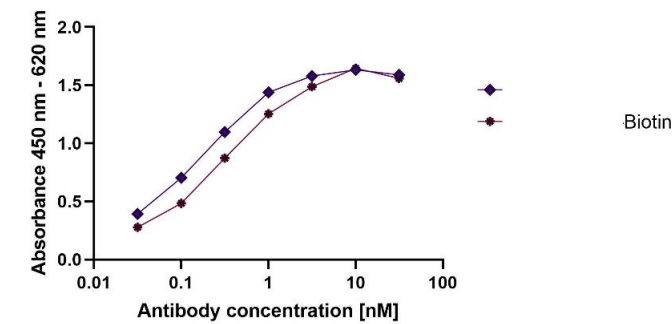
Concentration: 1 mg/mL

Buffer: PBS, pH 7.4, 0,02 % ProClin300

Handling

Preservative:	ProClin
Precaution of Use:	This product contains ProClin: a POISONOUS AND HAZARDOUS SUBSTANCE which should be handled by trained staff only.
Storage:	-20 °C

Images



ELISA

Image 1. Rabbit IgG was coated on an ELISA plate at 100 ng. Multiclonal anti-rabbit IgG unconjugated, (ABIN7581783), was titrated on top. Detection with anti-mouse HRP conjugated antibody. Binding reactions were visualized using TMB. Absorbance was measured in an ELISA plate reader at 450 nm using the signal at 620 nm as reference.