

Datasheet for ABIN758726
anti-CNTN2 antibody (AA 161-260)[Go to Product page](#)

1 Image

Overview

Quantity:	100 µL
Target:	CNTN2
Binding Specificity:	AA 161-260
Reactivity:	Human
Host:	Rabbit
Clonality:	Polyclonal
Conjugate:	This CNTN2 antibody is un-conjugated
Application:	ELISA, Immunohistochemistry (Paraffin-embedded Sections) (IHC (p)), Immunofluorescence (Cultured Cells) (IF (cc)), Immunofluorescence (Paraffin-embedded Sections) (IF (p)), Immunohistochemistry (Frozen Sections) (IHC (fro))

Product Details

Immunogen:	KLH conjugated synthetic peptide derived from human TAG1
Isotype:	IgG
Predicted Reactivity:	Human, Mouse, Rat, Dog, Cow, Sheep, Horse, Rabbit
Purification:	Purified by Protein A.

Target Details

Target:	CNTN2
Alternative Name:	TAG1 (CNTN2 Products)

Target Details

Background:	<p>Synonyms: Axonal glycoprotein TAG 1, Axonal glycoprotein TAG-1, Axonal glycoprotein TAG1, Axonin 1, Axonin-1, Axonin1, AXT, CNTN 2, Cntn2, CNTN2_HUMAN, contactin 2 axonal, Contactin 2, Contactin-2, Contactin2, DKFZp781D102, MGC157722, TAG 1, TAG 564, TAG564, TAX 1, TAX, TAX-1, TAX1, Transient axonal glycoprotein 1, Transiently expressed axonal glycoprotein.</p> <p>Background: Contactin 2 is a neuronal cell adhesion molecule (CAM) that influences the formation of axon connections in the developing nervous system. Contactin 2 is a member of the immunoglobulin superfamily (IgSF) and contains a glycosylphosphatidylinositol-anchor, six immunoglobulin (Ig)-like and four Fibronectin type III (FNIII)-like domains. Contactin 2 is expressed predominantly during neural development on the cell membrane of axons in nerve fiber tracts in order to guide commissural axons without promoting their growth. Contactin 2 binds with NgCAM in the plane of the same membrane (cis-binding). The Contactin 2 heterophilic (Contactin 2/NgCAM and Contactin 2/NrCAM) binding sites are localized to the first four Ig domains. The Contactin 2 homophilic (Contactin 2/Contactin 2) binding site is localized to the FNIII domain.</p>
Gene ID:	6900
Pathways:	Regulation of G-Protein Coupled Receptor Protein Signaling , Regulation of Cell Size

Application Details

Application Notes:	<p>ELISA 1:500-1000</p> <p>IHC-P 1:200-400</p> <p>IHC-F 1:100-500</p> <p>IF(IHC-P) 1:50-200</p> <p>IF(IHC-F) 1:50-200</p> <p>IF(ICC) 1:50-200</p>
Restrictions:	For Research Use only

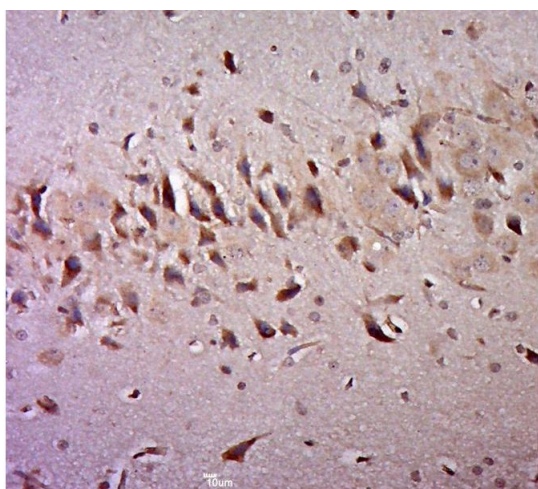
Handling

Format:	Liquid
Concentration:	1 µg/µL
Buffer:	0.01M TBS(pH 7.4) with 1 % BSA, 0.02 % Proclin300 and 50 % Glycerol.
Preservative:	ProClin

Handling

Precaution of Use:	This product contains ProClin: a POISONOUS AND HAZARDOUS SUBSTANCE, which should be handled by trained staff only.
Storage:	4 °C, -20 °C
Storage Comment:	Shipped at 4°C. Store at -20°C for one year. Avoid repeated freeze/thaw cycles.
Expiry Date:	12 months

Images



Immunohistochemistry (Paraffin-embedded Sections)

Image 1. Paraformaldehyde-fixed, paraffin embedded rat brain, Antigen retrieval by boiling in sodium citrate buffer (pH6.0) for 15min, Block endogenous peroxidase by 3% hydrogen peroxide for 20 minutes, Blocking buffer (normal goat serum) at 37°C for 30min, Antibody incubation with TAG1 Polyclonal Antibody, Unconjugated at 1:400 overnight at 4°C, followed by a conjugated secondary for 20 minutes and DAB staining.