

Datasheet for ABIN758756
anti-ADAM12 antibody (AA 201-300)[Go to Product page](#)

2 Images

Overview

Quantity:	100 µL
Target:	ADAM12
Binding Specificity:	AA 201-300
Reactivity:	Human, Mouse
Host:	Rabbit
Clonality:	Polyclonal
Conjugate:	This ADAM12 antibody is un-conjugated
Application:	ELISA, Western Blotting (WB), Immunohistochemistry (Paraffin-embedded Sections) (IHC (p)), Flow Cytometry (FACS)

Product Details

Immunogen:	KLH conjugated synthetic peptide derived from human ADAM12
Isotype:	IgG
Cross-Reactivity:	Human, Mouse
Predicted Reactivity:	Rat,Dog,Cow,Pig,Chicken,Rabbit
Purification:	Purified by Protein A.

Target Details

Target:	ADAM12
Alternative Name:	ADAM12 (ADAM12 Products)

Target Details

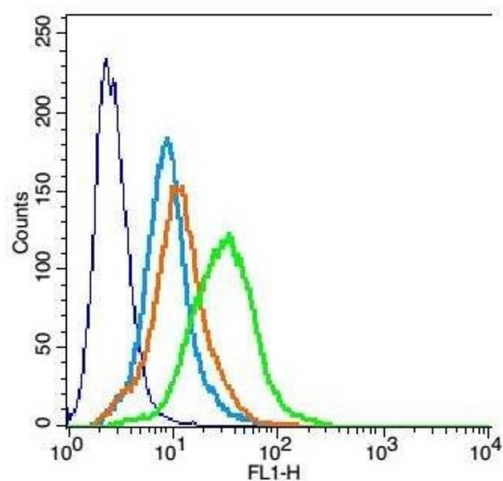
Background:	Synonyms: A disintegrin and metalloproteinase domain 12, A disintegrin and metalloproteinase domain 12, ADA12_HUMAN, ADAM 12, ADAM metalloproteinase domain 12, ADAM12, Disintegrin and metalloproteinase domain-containing protein 12, MCMP, MCMPMItna, MCMPMItna, Meltrin alpha, Meltrin-alpha, MLTN, MLTNA, OTTHUMP00000046766. Background: Involved in skeletal muscle regeneration, specifically at the onset of cell fusion. Also involved in macrophage-derived giant cells (MGC) and osteoclast formation from mononuclear precursors.
Gene ID:	8038
Pathways:	EGFR Signaling Pathway

Application Details

Application Notes:	WB 1:300-5000 ELISA 1:500-1000 FCM 1:20-100 IHC-P 1:200-400
Restrictions:	For Research Use only

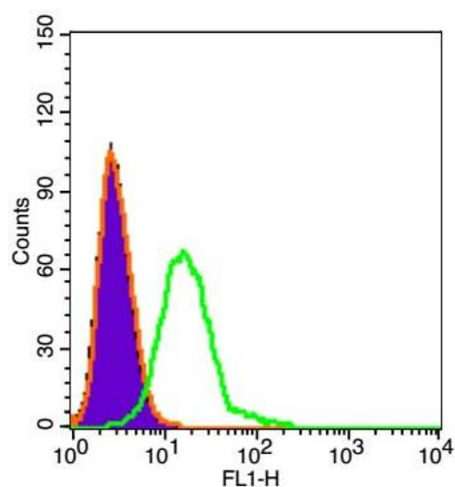
Handling

Format:	Liquid
Concentration:	1 µg/µL
Buffer:	0.01M TBS(pH 7.4) with 1 % BSA, 0.02 % Proclin300 and 50 % Glycerol.
Preservative:	ProClin
Precaution of Use:	This product contains ProClin: a POISONOUS AND HAZARDOUS SUBSTANCE, which should be handled by trained staff only.
Storage:	4 °C,-20 °C
Storage Comment:	Shipped at 4°C. Store at -20°C for one year. Avoid repeated freeze/thaw cycles.
Expiry Date:	12 months



Flow Cytometry

Image 1. H9C2 cells probed with Rabbit Anti-ADAM12 Polyclonal Antibody, Unconjugated at 3ug for 30 minutes followed by incubation with a conjugated secondary -FITC (green) for 30 minutes compared to control cells (blue), secondary only (light blue) and isotype control (orange).



Flow Cytometry

Image 2. U87MG cells probed with ADAM12 Polyclonal Antibody at 1:100 dilution for 30 minutes compared to control cells (black) and isotype control (orange).