

Datasheet for ABIN7590268

Caprin-1 Protein (AA 2-707) (His tag)



[Go to Product page](#)

1 Image

Overview

Quantity:	100 µg
Target:	Caprin-1
Protein Characteristics:	AA 2-707
Origin:	Rat
Source:	Yeast
Protein Type:	Recombinant
Purification tag / Conjugate:	This Caprin-1 protein is labelled with His tag.
Application:	ELISA

Product Details

Sequence:	<p>PSATSHSGS GSKSSGPPPP SGSSGSEAAA GAAAPASQHP ATGTGAVQTE AMKQILGVID</p> <p>KKLRNLEKKK GKLDYQERM NKGERLNQDQ LDAVSKYQEV TNNLEFAKEL QRSFMALSQD</p> <p>IQTKIKKTAR REQLMREEAE QKRLKTVLEL QYVLDKLGDD DVRTDLKQGL SGVPILSEEE</p> <p>LSSLDEFYKL VDPERDMSLR LNEQYEHASI HLWDLLEGKE KPVCGETTYKA LKEIVERVFQ</p> <p>SNYFDSTHNNH QNGLCEEEEA ASAPIVEDQV AEAPEPTTEE YTEQSEVEST EYVNRQFMAE</p> <p>TQFSSGEKEQ VDEWAVETVE VVNSLQQQPQ AASPSVPEPH SLTPVAQSDP LVRRQRVQDL</p> <p>MAQMCGPYNF IQDSMLDFEN QTLDPAIVSA QPMNPTQNMD MPQLVCPQVH SESRLAQSNN</p> <p>VPVQPEATQV PLVSSTSEGY TASQPLYQPS HAAEQRPQKE PIDQIQATIS LNTEQTTASS</p> <p>SLPAASQPQV FQAGASKPLH SSGINVNAAP FQSMQTVFNM NAPVPPVNEP ETLKQSSQYQ</p> <p>ASYNQSFSSQ PHQVEQTELQ QDQLQTVVGT YHGSQDQPHQ VPGNHQQPPQ QSTGFPRSSQ</p> <p>PYYNSRGVSR GSGRGARGLM NGYRGPANGF RGGYDGYRSS FSNTPNNSGYT QSQFNAPRDY</p> <p>SGYQRDGYQQ NFKRGSQSG PRGAPRGRGG PPRPNRGMPQ MNTQQVN</p>
-----------	---

Product Details

Specificity:	Rattus norvegicus (Rat)
Characteristics:	Please inquire if you are interested in this recombinant protein expressed in E. coli, mammalian cells or by baculovirus infection. Be aware about differences in price and lead time.
Purity:	> 90 %

Target Details

Target:	Caprin-1
Alternative Name:	Caprin-1 (Caprin1) (Caprin-1 Products)
Background:	<p>Recommended name: Caprin-1.</p> <p>Alternative name(s): Cytoplasmic activation- and proliferation-associated protein 1 GPI-anchored protein p137.</p> <p>Short name= GPI-p137.</p> <p>Short name= p137GPI RNA granule protein 105</p>
UniProt:	Q5M9G3

Application Details

Comment:	The yeast protein expression system is the most economical and efficient eukaryotic system for secretion and intracellular expression. A protein expressed by the mammalian cell system is of very high-quality and close to the natural protein. But the low expression level, the high cost of medium and the culture conditions restrict the promotion of mammalian cell expression systems. The yeast protein expression system serve as a eukaryotic system integrate the advantages of the mammalian cell expression system. A protein expressed by yeast system could be modified such as glycosylation, acylation, phosphorylation and so on to ensure the native protein conformation. It can be used to produce protein material with high added value that is very close to the natural protein. Our proteins produced by yeast expression system has been used as raw materials for downstream preparation of monoclonal antibodies.
----------	--

Restrictions:	For Research Use only
---------------	-----------------------

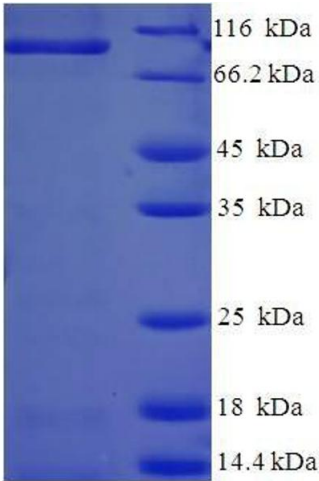
Handling

Format:	Lyophilized
Concentration:	0.2-2 mg/mL
Buffer:	Tris-based buffer, 50 % glycerol

Handling

Handling Advice:	Repeated freezing and thawing is not recommended. Store working aliquots at 4 °C for up to one week
Storage:	-20 °C
Storage Comment:	Store at -20 °C, for extended storage, conserve at -20 °C or -80 °C.

Images



SDS-PAGE

Image 1. Caprin-1 (AA 2-707) protein (His tag) expressed in E. coli