

Datasheet for ABIN759041  
**anti-Kallikrein 13 antibody (AA 151-250)**[Go to Product page](#)

## 2 Images

## Overview

Quantity:	100 µL
Target:	Kallikrein 13 (KLK13)
Binding Specificity:	AA 151-250
Reactivity:	Human
Host:	Rabbit
Clonality:	Polyclonal
Conjugate:	This Kallikrein 13 antibody is un-conjugated
Application:	Western Blotting (WB), ELISA, Immunofluorescence (Cultured Cells) (IF (cc)), Immunofluorescence (Paraffin-embedded Sections) (IF (p)), Immunohistochemistry (Paraffin- embedded Sections) (IHC (p)), Immunohistochemistry (Frozen Sections) (IHC (fro))

## Product Details

Immunogen:	KLH conjugated synthetic peptide derived from human KLK13
Isotype:	IgG
Predicted Reactivity:	Human,Mouse,Rat,Dog,Cow,Horse,Rabbit
Purification:	Purified by Protein A.

## Target Details

Target:	Kallikrein 13 (KLK13)
Alternative Name:	Klk13 ( <a href="#">KLK13 Products</a> )

## Target Details

Background:	<p>Synonyms: Kalikrein, Kallikrein 13, KLK 13, KLK-13, Kallikrein-13, Kallikrein L4, Kallikrein Like 4, Kallikrein like 4 variant included, Kallikrein like gene 4, Kallikrein like protein 4, Kallikrein related peptidase 13, Kallikrein-13, Kallikrein-like protein 4, KLK-L4, KLK13, KLK13_HUMAN, KLKL 4, KLKL4.</p> <p>Background: Kallikreins are a subgroup of serine proteases having diverse physiological functions. Growing evidence suggests that many kallikreins are implicated in carcinogenesis and some have potential as novel cancer and other disease biomarkers. This gene is one of the fifteen kallikrein subfamily members located in a cluster on chromosome 19. Expression of this gene is regulated by steroid hormones and may be useful as a marker for breast cancer. An additional transcript variant has been identified, but its full length sequence has not been determined. [provided by RefSeq, Jul 2008].</p>
Gene ID:	26085
Pathways:	<a href="#">Complement System</a>

## Application Details

Application Notes:	<p>WB 1:300-5000</p> <p>ELISA 1:500-1000</p> <p>IHC-P 1:200-400</p> <p>IHC-F 1:100-500</p> <p>IF(IHC-P) 1:50-200</p> <p>IF(IHC-F) 1:50-200</p> <p>IF(ICC) 1:50-200</p>
Restrictions:	For Research Use only

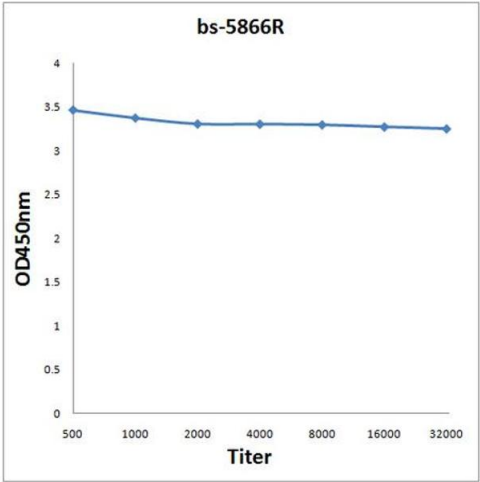
## Handling

Format:	Liquid
Concentration:	1 µg/µL
Buffer:	0.01M TBS( pH 7.4) with 1 % BSA, 0.02 % Proclin300 and 50 % Glycerol.
Preservative:	ProClin
Precaution of Use:	This product contains ProClin: a POISONOUS AND HAZARDOUS SUBSTANCE, which should be handled by trained staff only.
Storage:	4 °C,-20 °C

Handling

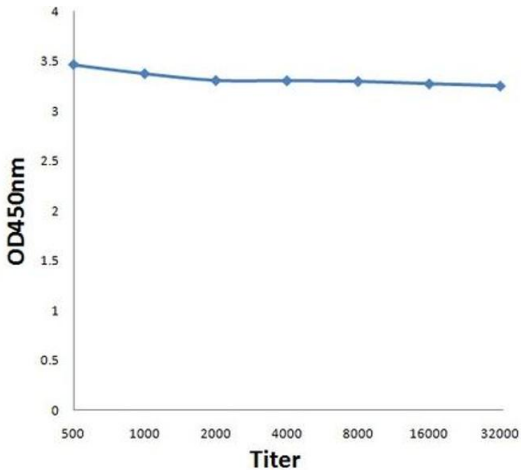
Storage Comment:	Shipped at 4°C. Store at -20°C for one year. Avoid repeated freeze/thaw cycles.
Expiry Date:	12 months

Images



**ELISA**

**Image 1.** Antigen: 0.2 µg/100 µL Primary: Antiserum, 1:500, 1:1000, 1:2000, 1:4000, 1:8000, 1:16000, 1:32000; Secondary: HRP conjugated Goat Anti-Rabbit IgG at 1: 5000; TMB staining; Read the data in Microplate Reader by 450nm



**ELISA**

**Image 2.** Antigen: 0.2ug/100ul, Primary: Antiserum, 1:500, 1:1000, 1:2000, 1:4000, 1:8000, 1:16000, 1:32000, Secondary: HRP conjugated Goat Anti-Rabbit IgG at 1: 5000, TMB staining Read the data in Microplate Reader by 450nm,