

Datasheet for ABIN759101

anti-Kallikrein 6 antibody (AA 217-244)**3** Images[Go to Product page](#)

Overview

Quantity:	100 µL
Target:	Kallikrein 6 (KLK6)
Binding Specificity:	AA 217-244
Reactivity:	Rat
Host:	Rabbit
Clonality:	Polyclonal
Conjugate:	This Kallikrein 6 antibody is un-conjugated
Application:	Western Blotting (WB), ELISA, Immunohistochemistry (Paraffin-embedded Sections) (IHC (p)), Immunofluorescence (Cultured Cells) (IF (cc)), Immunofluorescence (Paraffin-embedded Sections) (IF (p)), Immunohistochemistry (Frozen Sections) (IHC (fro))

Product Details

Immunogen:	KLH conjugated synthetic peptide derived from human KLK6
Isotype:	IgG
Cross-Reactivity:	Rat
Predicted Reactivity:	Human, Mouse
Purification:	Purified by Protein A.

Target Details

Target:	Kallikrein 6 (KLK6)
---------	---------------------

Target Details

Alternative Name:	KLK6 (KLK6 Products)
Background:	<p>Synonyms: hK6, Bssp, Klk7, SP59, PRSS9, PRSS18, Kallikrein-6, Neurosin, Protease M, Serine protease 18, Serine protease 9, Zyme, KLK6</p> <p>Background: Serine protease which exhibits a preference for Arg over Lys in the substrate P1 position and for Ser or Pro in the P2 position. Shows activity against amyloid precursor protein, myelin basic protein, gelatin, casein and extracellular matrix proteins such as fibronectin, laminin, vitronectin and collagen. Degrades alpha-synuclein and prevents its polymerization, indicating that it may be involved in the pathogenesis of Parkinson disease and other synucleinopathies. May be involved in regulation of axon outgrowth following spinal cord injury. Tumor cells treated with a neutralizing KLK6 antibody migrate less than control cells, suggesting a role in invasion and metastasis.</p>
Gene ID:	5653
UniProt:	Q92876
Pathways:	Complement System , Regulation of G-Protein Coupled Receptor Protein Signaling

Application Details

Application Notes:	WB 1:300-5000 ELISA 1:500-1000 IHC-P 1:200-400 IHC-F 1:100-500 IF(IHC-P) 1:50-200 IF(IHC-F) 1:50-200 IF(ICC) 1:50-200
Restrictions:	For Research Use only

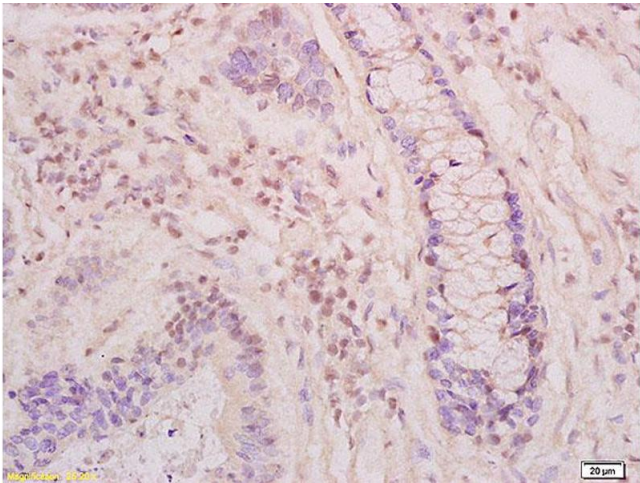
Handling

Format:	Liquid
Concentration:	1 µg/µL
Buffer:	0.01M TBS(pH 7.4) with 1 % BSA, 0.02 % Proclin300 and 50 % Glycerol.
Preservative:	ProClin
Precaution of Use:	This product contains ProClin: a POISONOUS AND HAZARDOUS SUBSTANCE, which should be handled by trained staff only.

Handling

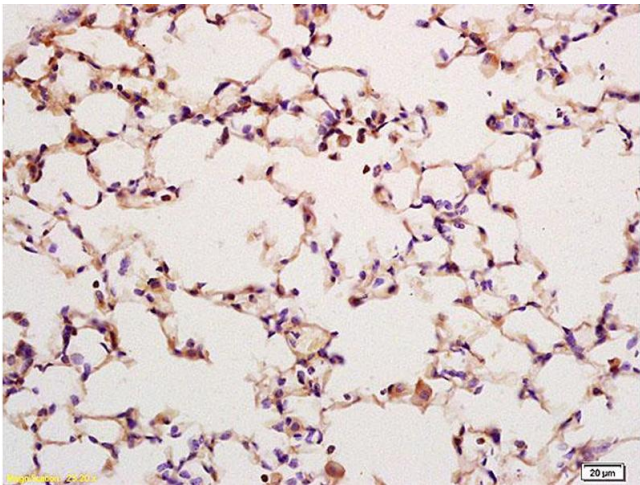
Storage:	4 °C,-20 °C
Storage Comment:	Shipped at 4°C. Store at -20°C for one year. Avoid repeated freeze/thaw cycles.
Expiry Date:	12 months

Images



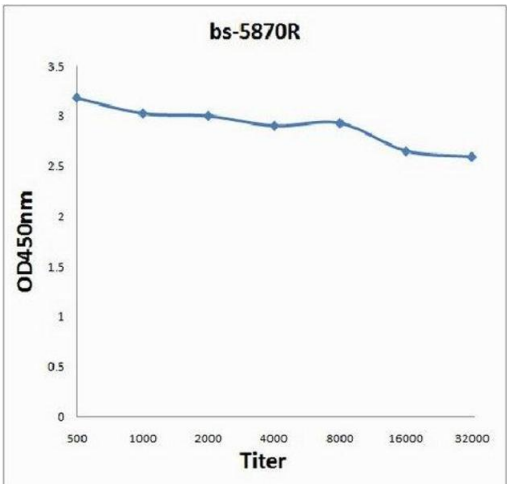
Immunohistochemistry

Image 1. Formalin-fixed and paraffin embedded human colon carcinoma tissue labeled with Anti KLK6 Polyclonal Antibody,Unconjugated (ABIN759101) at 1:200 followed by conjugation to the secondary antibody and DAB staining.



Immunohistochemistry

Image 2. Formalin-fixed and paraffin embedded rat lung labeled with Anti KLK6 Polyclonal Antibody,Unconjugated (ABIN759101) at 1:200 followed by conjugation to the secondary antibody and DAB staining.



ELISA

Image 3. Antigen: 0.2ug/100ul Primary: Antiserum, 1:500, 1:1000, 1:2000, 1:4000, 1:8000, 1:16000, 1:32000, Secondary: HRP conjugated Goat-Anti-Rabbit IgG-HRP) at 1: 5000,TMB staining,Read the data in MicroplateReader by 450